



witte.

Product List

Simply works. **witte**®



Dear Customers, Dear Business Partners,

In front of you is the new price list with many new and innovative products. These are presented on pages 8 to 10 and marked with a „New“ label **NEW** in the list.

We would also like to take this opportunity to point out that our conveyor systems are compatible with a wide range of systems or installations in terms of pipe or spiral diameter, corners, chains, etc., thanks to the compatible components.

Innovation

We continuously invest in new product ideas or in further development of existing products. However, the most important impulses still come from you, our customers. We are always open and grateful for constructive dialogue and criticism. These are on pages 8 to 10.

Tieraktiv

In the area of animal welfare, we have newly developed systems for our Tieraktiv facilities, with various references in the fields of pigs, poultry, and cattle; pages 92-99.

Service

Our goal is to make you and your company even more successful. To increase our delivery capacity, we have expanded our pallet spaces to 4,800. This enables us to fulfill your orders more reliably and on time. Thanks to our experienced and trained employees, you will receive competent advice, and any potential issues will be resolved. We are happy to send you additional information materials or answer your questions.

Nobody is perfect; if there is an issue with our service or products, please contact our representatives (see the following page) or reach out to me directly:

T: +49 (0)4472-9404-18
E: ju.witte@witte-lastrup.de

Do you have questions about our products and services or need technical information about our systems? Whatever your concerns may be, our employees are here for you. We look forward to getting to know you!

Team



Julian Witte
Managing Director
ju.witte@witte-lastrup.de
+49 4472 9404-0



Karl-Heinz Wöste
Managing Director
k.woeste@witte-lastrup.de
+49 4472 9404-0



Ulrich Kramer
Productmanagement
u.kramer@witte-lastrup.de
+49 4472 9404-35



Heiko Hofmann
Sales
h.hofmann@witte-lastrup.de
+49 4472 9404-17



Rüdiger Fritsch
Sales
r.fritsch@witte-lastrup.de
+49 4472 9404-72



Andre Kecksel
Sales
a.kecksel@witte-lastrup.de
+49 4472 9404-27



Norbert Nowarra
Sales
n.nowarra@witte-lastrup.de
+49 4472 9404-15



Tom Schleper
Sales
t.schleper@witte-lastrup.de
+49 4472 9404-38



John van Loon
Sales
j.loon@witte-lastrup.de
+31 (6) 23385337



Lena Dill
Sales
l.dill@witte-lastrup.de
+49 4472 9404-33



René Mecklenburg
Sales
r.mecklenburg@witte-lastrup.de
+49 4472 9404-41



Christoph Thole
Sales
c.thole@witte-lastrup.de
+49 4472 9404-13



Sandra Pohlschmidt
Sales
s.pohlschmidt@witte-lastrup.de
+49 4472 9404-29



Timo Schürmann
Purchase
t.schuermann@witte-lastrup.de
+49 4472 9404-70



Michael Bley
Purchase
m.bley@witte-lastrup.de
+49 4472 9404-71



Janna Abeln
Purchase
j.abeln@witte-lastrup.de
+49 4472 9404-32



Oksana Miller
Purchase
o.miller@witte-lastrup.de
+49 4472 9404-22



Wolfgang Kassubek
Purchase
w.kassubek@witte-lastrup.de
+49 4472 9404-12

Contents

	Kategorie	Seite
00	New Products	8
01	Drive Units	11
02	Conveyor Chains	18
03	Loading Hoppers	22
04	Tube couplers & Control Pipes	29
05	Corners	32
06	Feed Droplet	39
07	PVC Tubes & Conveyor Pipes	48
08	Sensors	52
09	Electrical Control Units	57
10	Radio Control Units	61
11	Dispensers	64
12	Release System	71
13	Manual Winches	75
14	Electric Winches	79
15	Micro Dosing Dispensers	81

	Kategorie	Seite
16	Drinking Valves	84
17	Fastening Material	87
18	Bedding Systems/TierAktiv	92
19	Pneumatics	99
20	Conveyor Auger WVS Witte Vario System	104
21	Conveyor Auger WVS Equipment	126
22	Individual Parts List	130
23	Conveyor Auger WAS Witte Auger System	137
24	Screw Auger 100	154
25	Screw Auger 150	165
26	Screw Auger 200	177
27	Trough Screw Auger 150	183
28	Motors & Gear Boxes	189
29	Product Dimensions	192
30	Terms & Conditions	196

00 New Products

NEW



Pig-O-Bello Corner Wheel

The Pig-O-Bello Plus corner wheel for the Ø 60mm and Ø 80mm pipe chain system consists of 5 segments, including screws, and is optionally available pre-assembled with a cast wheel.

Advantages: Significantly less accumulation of roughage in the gaps. Should not be used for grain or pellets. Improves the feed transport flow.

More on [page 37](#)

NEW



Pig-O-Bello Corner

The new generation of corners, with improved sealing of the corner halves, option for simplified corner cleaning, and reduced dust and dirt accumulation due to the smooth surface.

More on [page 34](#).

NEW



127er Chain Disc System

- Pipe chain conveyor (127 system)
- with higher capacity
- 6 tons per hour
- proven technology

More on [page 12](#)

NEW



Screw Auger 200

- With practical motor mount
- Simple and stable construction
- 40 tons per hour at a 40° incline and bulk density of 0.75 t/m³

More on [page 178](#)

NEW



Silo Slider

Makes work at the feed silo easier. Allows silo sliders to be operated by cordless screwdriver, electric motor, or hand crank. Direct pushing or pulling by hand when feed is swelling or jammed is no longer necessary.

More on [page 124](#)

NEW



Control Pipe Auger System

The spiral pipe system allows for feed monitoring through a robust, UV-stabilized, transparent plastic housing. Thanks to special sealant grooves, it is also suitable for outdoor use. It is designed for Ø 75mm and Ø 89mm conveyor pipes and is supplied with V2A screws and nuts.

More on [page 107](#)

NEW



GPX Gear Box

The new GPX gearbox from Witte. Tested at the Center for Materials and Technology – Diepholz (Private University of Applied Sciences in Business and Technology). Maximum load capacity 2.5 times higher than other brands.

More on [page 106](#)

NEW



Chain Channel System

- No more clogging with poorly flowing feed such as straw chaff or corn
- Improved size ratio of the conveyor disc to the profile cross-section of the rectangular trough
- Easy cleaning with the easily opened trough cover!

NEW

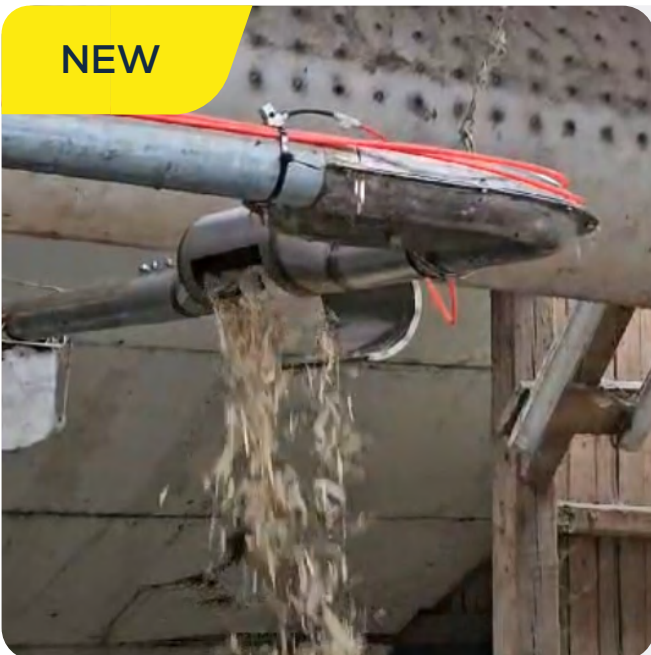


Click Pipe Repair Kit

For quick repairs of bends and pipes in spiral systems ($\varnothing 75$), the system offers several advantages: It reduces repair costs compared to replacing the entire bend or pipe. A foamed sealing lip ensures that the Click Pipe is „leak-proof and water-tight.“ The pipe is also available as a single part for patching smaller areas. The bend repair kit, consisting of upper and lower halves, is delivered complete in a ready-to-ship box.

More on [page 107](#)

NEW



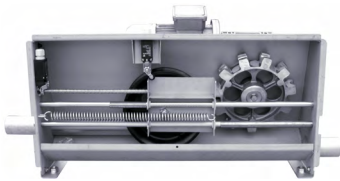
Straw System Witte

The new and improved straw system is here!
For more information, please contact us directly.

01 Drive Units

Drive Units

Drive unit BASIC, 1.5 kW, sst (AISI 304)



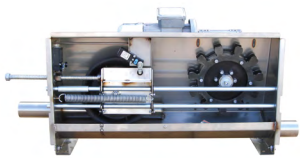
Ø 60 mm
Art.-Nr.: 601304

for chain conveyance, with two roller end switches (cover & chain length monitoring), with aluminium drive wheel, gear motor: 230/400V, 50/60Hz, 35 rpm. Suitable for chain 607042.

VPE

4 pc. / box.

Drive unit PLUS, 1.5 kW, sst (AISI 304)



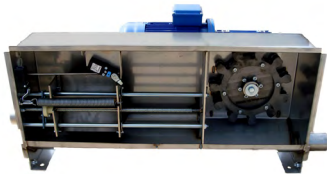
Ø 60 mm
Art.-Nr.: 10022000

for chain conveyance, with two roller end switches (cover & chain length monitoring), with steel drive wheel, gear motor: 230/400V, 50/60Hz, 35 rpm. Also available as left-hand rotation (10022011). Suitable for chain 10211017 & 10211061.

VPE

4 pc. / box.

Drive unit PREMIUM, 2.2 kW, sst (AISI 304)



Ø 60 mm
Art.-Nr.: 10022008

for chain conveyance, with two roller end switches (cover & chain length monitoring), with steel drive wheel HD, gear motor: 230/400V, 50/60Hz, 35 rpm. Also available as left-hand rotation (10022018). Suitable for chain 10211046 & 10211047.

VPE

1 pc.

Drive unit EasyPower, 2.2 kW, sst (AISI 304)



Ø 80 mm
Art.-Nr.: 10022017

for chain conveyance, with two roller end switches (cover & chain length monitoring), internal expansion screw, gear motor: 230/400V, 50/60Hz, 35 rpm. Suitable for chain 10211028.

VPE

1 pc.

NEW

Drive unit, 3.0 kW



Ø 127 mm
Art.-Nr.: 10022035

for chain conveyor, gear motor: 400V/50Hz, suitable for chain 10211057.

VPE

1 pc.

We recommend the following equipment:



Drive wheel "Spoked" WL PLUS

Ø 60 mm
Art.-Nr.: 10011028

Bore Ø 38 mm, for chains with 71.5 mm pulley spacing, cast steel, unpainted.
Suitable for drive unit 10022000 & 10022011.

VPE

1 pc.



Drive wheel ALU, BASIC

Ø 60 mm
Art.-Nr.: 601304-31

Bore Ø 38 mm, for chains with 70 mm pulley spacing, cast aluminium. Suitable for drive unit 601304.

VPE

1 pc.



Drive wheel "Spoked" WL PREMIUM

Ø 60 mm
Art.-Nr.: 10011029

Bore Ø 38 mm, for chains with 71.5 mm pulley spacing, rounded & wider tooth flanks, cast steel, unpainted. Suitable for drive unit 10022008 & 10022018.

VPE

1 pc.



Bracket for drive unit, galvanised

Ø 60 mm
Art.-Nr.: 10021000

Dimensions: 430 x 460 mm, 2-part, without screws. Suitable for PLUS 10022000 & BASIC 601304 drive.

VPE

1 pc.



Bracket for drive unit WL, sst (AISI 304)

Ø 60 mm
Art.-Nr.: 10022007

Dimensions: 750 x 400 mm, bore spacing: 700 mm, without screws. Suitable for PLUS 10022000 drive.

VPE

1 pc.

Bracket for drive unit PREMIUM, sst (AISI 304)

Ø 60 mm
Art.-Nr.: 10021014

Dimensions: 900 x 450 mm, without screws. Suitable for PREMIUM 10022008 drive.

VPE

1 pc.

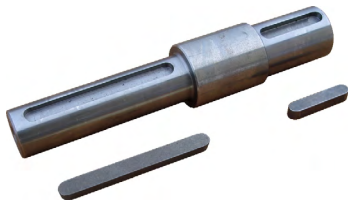
Bracket for drive unit EasyPower, galvanised

Ø 80 mm
Art.-Nr.: 10022006

Dimensions: 500 x 500 mm, 2-part, without screws. Suitable for EasyPower 10022017 drive.

VPE

1 pc.

Driving axle, PLUS & BASIC

Ø 60 mm
Art.-Nr.: 601304-35E

Shaft Ø for the gearbox: 32 mm, shaft Ø for drive wheel: 38 mm, plus parallel keys

1x 70311000

1x 70311001

Fits drive unit 10022000, 10022011 & 601304.

VPE

1 pc.

Line reduction, Ø 60 / 50 mm, hot-dip galvanised

Ø 60 mm
Art.-Nr.: 800050

Length: 223 mm, suitable for all drives & infeeds

VPE

1 pc.

Line reduction, Ø 60 / 45 mm, hot-dip galvanised

Ø 60 mm
Art.-Nr.: 800045

Length: 195 mm, suitable for all drives & infeeds

VPE

1 pc.

Line reduction, Ø 60 / 38 mm, hot-dip galvanised

Ø 60 mm
Art.-Nr.: 800046

Length: 195 mm, suitable for all drives & infeeds

VPE

1 pc.

The following rain covers are used to protect the drive units from splash water as prescribed.

GRP rain protection for BASIC & PLUS drive unit



Ø 60 mm
Art.-Nr.: 601000
 Dimensions: 910 x 400 x 600 mm

VPE

2 pc.

GRP rain protection for PREMIUM drive unit



Ø 60 mm
Art.-Nr.:10021015
 Dimensions: 990 x 470 x 715 mm

VPE

1 pc.

GRP rain protection for EasyPower drive unit



Ø 80 mm
Art.-Nr.:10021034
 Dimensions: 1200 x 470 x 500 mm, incl. handles

VPE

1 pc.



Limit switch, with reset function

Ø 60 mm

Art.-Nr.:601304-19

for chain length monitoring, for all chain drives

VPE

1 pc.



Limit switch, without reset function

Ø 60 mm

Art.-Nr.:10011000

for cover opening monitoring, for all chain drives

VPE

1 pc.



Electric motor M080B4, 0.75 kW, 1410 rpm

Art.-Nr.:M080B4B5

380-420V-50Hz, shaft 19 x 40 mm, flange 200 x 130 x 165 mm

VPE

1 pc.



Electric motor M090L4, 1.5 kW, 1420 rpm

Art.-Nr.:M090L4B5

400V-50Hz, 3 Ph., shaft 24 x 50 mm, flange 200 x 130 x 165 mm. Suitable for drive unit 10022000, 10022011 & 601304

VPE

1 pc.



Electric motor M090LCX4, 2.2 kW, 1440 rpm

Art.-Nr.:M090LCX4B14

400V-50Hz, shaft 24 x 50 mm, flange 140 x 95 x 115 mm. Suitable for drive unit 10022008 & 10022018

VPE

1 pc.



Worm gear box EN 075, IEC90B5, i = 40, for 0.75 - 1.85 kW, cast aluminium

Ø 60 mm

Art.-Nr.:32013022

Hollow shaft Ø 32 mm, output flange Ø 200 mm, for motor M090L4 & M080B4
(with sleeve 13013003), suitable for drives 10022000, 10022004 & 601304

VPE

1 pc.



Worm gear box EN 090, i = 40, for 2.2 kW, cast aluminium

Ø 60 mm

Art.-Nr.:32013050

Hollow shaft Ø 35 mm, output flange Ø 200 mm, for motor MM090LCX4.
Suitable for drive 10022008, 10022018 & 10022017

VPE

1 pc.



motor sleeve 19/24 mm

Art.-Nr.:AD19/24

for auger gear 1.5 kW to 0.75 kW, suitable for motor M080B4B5

VPE

1 pc.



Note: All gear motors must be protected from splash water. 1 pc. Type plate (90911002) must be attached to the unit by the customer.

02 Conveyor Chains

Conveyor Chains

Conveyor chain PA, disc Ø 34 mm, hardened



Ø 45 mm
Art.-Nr.: 10211007

Disc spacing 51.5 mm, carrier made of polyamide, colour: white, without conveying direction

VPE

50 m / pc.
1000 m / pal.

Conveyor chain BASIC, disc Ø 38 mm, galvanised



Ø 45 mm
Art.-Nr.: 451110

Disc spacing 70 mm, carrier made of polypropylene, colour: white, with conveying direction

VPE

50 m / pc.
1000 m / pal.

Conveyor chain V-Power 2.0 Blend GF, disc Ø 44 mm, hardened



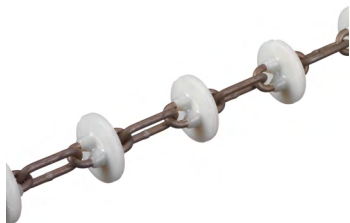
Ø 60 mm
Art.-Nr.:10211046

Disc spacing 71.5 mm, carrier made of special plastic, colour: black, without conveying direction

VPE

50 m / pc.
800 m / pal.

Conveyor chain V-Power 2.0 PA GF, disc Ø 44 mm, hardened



Ø 60 mm
Art.-Nr.:10211047

Disc spacing 71.5 mm, carrier made of special plastic, colour: white, without conveying direction

VPE

50 m / pc.
800 m / pal.

Conveyor chain WL 42, BGF, disc Ø 42 mm, galvanised



Ø 60 mm
Art.-Nr.:10211061

Disc spacing 71.5 mm, colour: black, with conveying direction

VPE

50 m / pc.
1000 m / pal.



Conveyor chain PLUS, disc Ø 42 mm, galvanised

Ø 60 mm
Art.-Nr.: 10211017

Distance between discs 71.5 mm, carrier made of special plastic, chain with notch, colour: white, with conveying direction, for pellets

VPE

50 m / pc.
1000 m / pal.



Conveyor chain BASIC, disc Ø 45 mm, galvanised

Ø 60 mm
Art.-Nr.: 607042

Disc spacing 70 mm, carrier made of polypropylene, colour: white, with conveying direction

VPE

50 m / pc.
1000 m / pal.



Conveyor chain EasyPower, disc Ø 60 mm, galvanised

Ø 80 mm
Art.-Nr.: 10211028

Disc spacing 85 mm, carrier made of special plastic (Polyamide, fibreglass reinforced), colour: white, without conveying direction

VPE

50 m / pc.
1000 m / pal.

NEW



Conveyor chain PA GF, disc Ø 90 mm, galvanised

Ø 127 mm
Art.-Nr.: 10211057

Disc spacing 104 mm

VPE

25 m / pc.

We recommend the following equipment:

Chain coupler, hardened, yellow galvanised

Ø 45 mm

Art.-Nr.: 455137

for chains with 51 & 51.5 mm disc spacing, suitable for chain 10211007.

VPE

Minimum order
quantity: 10

Chain coupler BASIC, unhardened, galvanised

Ø 60 mm

Art.-Nr.: 607019

for chains with 70 mm disc spacing. Suitable for chain 607042.

VPE

Minimum order
quantity: 10

Chain coupler EasyPower, hardened, yellow galvanised

Ø 80 mm

Art.-Nr.: 10211030

for chains with 85 mm disc spacing. Suitable for chain 10211028.

VPE

Minimum order
quantity: 10

Chain coupler, hardened, yellow galvanised

Ø 127 mm

Art.-Nr.: 10211064

for chains with 104 mm disc spacing. Suitable for chain 10211057.

VPE

Chain coupler BASIC, unhardened, galvanised

Ø 60 mm

Art.-Nr.: 607019

for chains with 70 mm disc spacing. Suitable for chain 607042.

VPE

Minimum order
quantity: 10

Cleaning brush

Ø 60 mm

Art.-Nr.: 10911000

only suitable for Ø 60 mm pipe system, for occasional cleaning of the delivery pipe

VPE

1 pc.



Note: Should you use brush carriers for cleaning purposes in a dry feeding system, one brush carrier should be installed per 50 m of conveyor chain. The chain should then run for approx. 30 minutes with the brush carriers & without additional filling to avoid clogging. The cleaning elements must then be removed again.

03 Loading Hoppers

Loading Hoppers



Note: The specification of the direction refers to the direction of the auger! – Right-hand auger rotation corresponds to left-hand chain rotation. Arrows on the infeed indicate the direction of the chain.



Loading hopper, sst (AISI 304), single-circuit

Ø 60 mm
Art.-Nr.: 10111028
Infeed station, single-circuit

VPE

1 pc.
15 pc. / pal.



Loading hopper, sst (AISI 304), single-circuit

Ø 80 mm
Art.-Nr.:10111075
with shaker and volume adjustment slider

VPE

1 pc.



Loading hopper, sst (AISI 304), double-circuit

Ø 60 mm
Art.-Nr.:10111029
Infeed station, double-circuit

VPE

1 pc.
15 pc. / pal.



Loading hopper, sst (AISI 304), double-circuit, with motor-driven longitudinal auger, without return flow

Ø 60 mm
Art.-Nr.:10111007
2 x gear motor: 0.18 kW, longitudinal to conveyor line, without vibrator plate,
extended feed trough, approx. 50 % discharge rate

VPE

1 pc.
6 pc. / pal.

Loading hopper, sst (AISI 304), single-circuit, right-hand flow, with return flow**Ø 60 mm****Art.-Nr.: 10111048**

Chain-driven dosing auger, flat slide valve, approx. 50 % discharge rate

VPE1 pc.
8 pc. / pal.**Loading hopper, sst (AISI 304), single-circuit, left-hand flow, with return flow****Ø 60 mm****Art.-Nr.:10111049**

Chain-driven dosing auger, flat slide valve, approx. 50 % discharge rate

VPE1 pc.
8 pc. / pal.**Loading hopper, sst (AISI 304), single-circuit, right-hand flow, with return flow****Ø 60 mm****Art.-Nr.:10111050**

Chain-driven dosing auger, flat slide valve, approx. 25 % discharge rate

VPE1 pc.
8 pc. / pal.**Loading hopper, sst (AISI 304), single-circuit, left-hand flow, with return flow****Ø 60 mm****Art.-Nr.:10111051**

Chain-driven dosing auger, flat slide valve, approx. 25 % discharge rate

VPE1 pc.
8 pc. / pal.**Loading hopper, sst (AISI 304), single-circuit, with motor-driven longitudinal auger, without return flow****Ø 60 mm****Art.-Nr.: 10111002**

1 x gear motor: 0.18 kW, longitudinal to conveyor line, without vibrator plate, extended feed trough, approx. 50 % discharge rate

VPE1 pc.
6 pc. / pal.**Loading hopper, sst (AISI 304)****Ø 127 mm****Art.-Nr.:10111095**

with motor-driven longitudinal auger (0.18 kW), with shaker and volume adjustment slide

VPE

1 pc.

Loading hopper, sst (AISI 304), single-circuit**Ø 80 mm****Art.-Nr.:10111043**

with motor-driven longitudinal auger (0.18 kW)

VPE

1 pc.



We recommend the following equipment:



Rain cover, PP, gear motor 0.18 kW, feed infeed 1 lane

Ø 60 mm
Art.-Nr.: 10021038

Dimensions: 180 x 350 x 205 mm, incl. fixing bolts, for 0.18 kW gear motor of infeed 10111002, left cut-out

VPE

1 pc.
20 pc. / pal.



Rain cover, PP, gear motor 0.18 kW, feed infeed 2 lane

Ø 60 mm
Art.-Nr.: 10021046

Dimensions: 180 x 350 x 205 mm, incl. fixing bolts, for 0.18 kW gear motor of infeed 10111007, right cut-out

VPE

1 pc.
20 pc. / pal.



Silo funnel, sst (AISI 304), Ø 300 mm, for Trevira Silo

Ø 60 mm
Art.-Nr.: 10121047

Complete, incl. PA slide valve guide

VPE

1 pc.



Silo funnel, sst (AISI 304), Ø 350 mm, for Trevira Silo

Ø 60 mm
Art.-Nr.: 10121048

Complete, incl. PA slide valve guide

VPE

1 pc.



Silo funnel, sst (AISI 304), Ø 400 mm, for Trevira Silo

Ø 60 mm
Art.-Nr.: 10121049

Complete, incl. PA slide valve guide

VPE

1 pc.

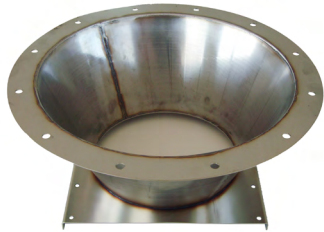


Silo funnel, sst (AISI 304), Ø 450 mm, for Trevira Silo

Ø 60 mm
 Art.-Nr.:10121050
 Complete, incl. PA slide valve guide

VPE

1 pc.



Silo connection funnel, sst (AISI 304), with horizontal flange Ø 560 mm

Ø 60 mm
 Art.-Nr.: 10121023
 Complete, incl. slide valve guide

VPE

1 pc.

12 pc. / pal.

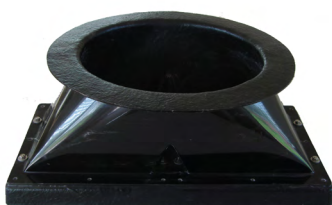


Rain cover, sst (AISI 304)

Ø 60 mm
 Art.-Nr.:10111036
 for silo hopper 10121023

VPE

1 pc.



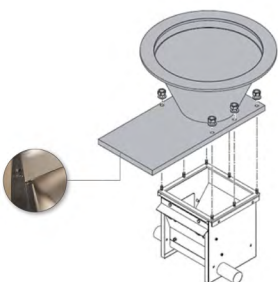
Silo connection, GRP

Ø 60 mm
 Art.-Nr.:10121024
 Dimensions: 758 x 390 x 304 mm, complete & disassembled, with PA slide valve guide

VPE

1 pc.

4 pc. / pal.



Silo connection, GRP, in SET

Ø 60 mm
 Art.-Nr.:10121014
 Dimensions: 840 x 565 x 187 mm, fitted, with PA slide valve guide, slide & screws

VPE

1 pc.

6 pc. / pal.

Transfer-Hopper, galvanised, in SET

Ø 60 mm
Art.-Nr.:10121003-SET

Installation height: 190 mm, inlet Ø 150 mm, consisting of pipe transfer & clamping ring 13311007

VPE

1 pc.

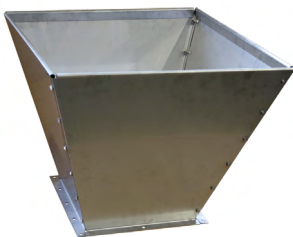
30 ltr. container, sst (AISI 304)

Ø 60 mm
Art.-Nr.:800402

Dimensions: 440 x 440 x 260 mm, with PA slide valve guide, incl. slide valve & screws

VPE

1 pc.

100 ltr. container, sst (AISI 304)

Ø 60 mm
Art.-Nr.:800502

Dimensions: 570 x 570 x 490 mm, with PA slide valve guide, incl. slide valve & screws

VPE

1 pc.

350 ltr. container, sst (AISI 304)

Ø 60 mm
Art.-Nr. 800602

Dimensions: 730 x 730 x 780 mm, with PA slide valve guide, incl. slide valve & screws

VPE

1 pc.

350 ltr. container, sst (AISI 304)

Ø 60 mm
Art.-Nr.:800703

Dimensions: 730 x 730 x 780 mm, with PA slide valve guide, incl. slide valve, screws & four supports (height: 1200 mm)

VPE

1 pc.



Protection, sst (AISI 304)

Ø 60 mm

Art.-Nr.:10111052

for insertion into the 350 ltr. Container Item no. 800703

VPE

1 pc.



Cover, sst (AISI 304)

Ø 60 mm

Art.-Nr.:10121045

1.5 mm, incl. bores for handle, for 350 ltr. Container, Item no. 800703

VPE

1 pc.

NEW



Silo slider

Ø 60 mm

Art.-Nr.:10121068

Remote control for silo hopper on chain with crank, complete.

VPE

1 pc.

04 Tube couplers & Control Pipes

Tube Couplers



Name	System	Art.-Nr.:	Information	VPE
Tube coupler, galvanised, 1-piece	Ø 38 mm	10222004	with screws & nuts, length: 200 mm	92 pc. / box.
Tube coupler, galvanised, 1-piece	Ø 45 mm	10222014	with screws & nuts, length: 200 mm	72 pc. / box.
Tube coupler, sst (AISI 304), 1-piece	Ø 45 mm	10222050	with screws & nuts, length: 200 mm	72 pc. / box.
Tube coupler, galvanised, 1-piece	Ø 48 mm	10222025	with screws & nuts, length: 200 mm	66 pc. / box.
Tube coupler, sst (AISI 304), 1-piece	Ø 48 mm	10222049	with screws & nuts, length: 200 mm	64 pc. / box.
Tube coupler, galvanised, 1-piece	Ø 50 mm	10222003	with screws & nuts, length: 200 mm	66 pc. / box.
Tube coupler, sst (AISI 304), 1-piece	Ø 50 mm	10222080	with screws & nuts, length: 200 mm	64 pc. / box.
Tube coupler, galvanised, 1-piece	Ø 60 mm	10222002	with screws & nuts, length: 200 mm	42 pc. / box.
Tube coupler, sst (AISI 304), 1-piece	Ø 60 mm	10222000	with screws & nuts, length: 200 mm	42 pc. / box.
Tube coupler, galvanised, 1-piece	Ø 80 mm	10222079	with screws & nuts, length: 200 mm	28 pc. / box.
Tube coupler, sst (AISI 304), 1-piece	Ø 80 mm	10222088	with screws & nuts, length: 200 mm	28 pc. / box.
Tube coupler, galvanised, 1-piece	Ø 127 mm	0112045	with screws & nuts	1 pc.

Control Pipes

Control pipe, galvanised



Ø 45 mm

Art.-Nr.:451220

with inspection window, length: 480 mm

VPE

100 pc. / box.

Control pipe, galvanised



Ø 80 mm

Art.-Nr.:10221011

with inspection window, length: 500 mm

VPE

100 pc. / box.

Control pipe, sst (AISI 304)



Ø 80 mm

Art.-Nr.:10221013

with inspection window, length: 500 mm

VPE

100 pc. / box.

Control pipe, transparent, complete



Ø 60 mm

Art.-Nr.: 10221007-SET

with internal tube stops, incl. 2 pcs. hose clamps (17311015), in V2A (AISI 304), for fixing, spread 50 - 70 mm

VPE

1 pc.
200 pc. / box.

Control pipe, transparent, 2-piece



Ø 60 mm

Art.-Nr.:10221019-SET

two-piece, incl. screws

VPE

1 pc.

05 Corners

Corners



Note: The ribbed corners are also available in the colours red, blue and green on request.



90° corner (WL), PA GF (ribbed)

Ø 45 mm

Art.-Nr.:10222008

with polyamide diverter wheel, two specially sealed ball bearings, stainless steel axle & screws, colour: blue

VPE

100 pc.



90° corner (WL), PA GF (ribbed)

Ø 45 mm

Art.-Nr.:10222029

with cast iron diverter wheel, two specially sealed ball bearings, stainless steel axle & screws, colour: blue

VPE

100 pc.



90° corner (WL), PA GF (ribbed)

Ø 50 mm

Art.-Nr.:10222007

with polyamide diverter wheel, two specially sealed ball bearings, stainless steel axle & screws, colour: blue

VPE

100 pc.



90° corner (WL), PA GF (ribbed)

Ø 50 mm

Art.-Nr.: 10222026

with cast iron diverter wheel, two specially sealed ball bearings, stainless steel axle & screws, colour: blue

VPE

100 pc.



90° corner, PIGOBELLO, PA GF

Ø 60 mm

Art.-Nr.:10222108

with optimised cast wheel, two specially sealed ball bearings, stainless steel axle & screws, colour: black

VPE

100 pc.



90° corner, PIGOBELLO, PA GF

Ø 60 mm
Art.-Nr.: 10222107

with optimised cast wheel, two specially sealed ball bearings, stainless steel axle & screws, colour: red

VPE

100 pc.



90° corner, PIGOBELLO, PA GF

Ø 60 mm
Art.-Nr.: 10222103

with optimised cast wheel, two specially sealed ball bearings, stainless steel axle & screws, colour: blue

VPE

100 pc.



90° corner, PIGOBELLO, PA GF

Ø 60 mm
Art.-Nr.: 10222106

with optimised cast wheel, two specially sealed ball bearings, stainless steel axle & screws, colour: green

VPE

100 pc.



90° corner (WL), PA GF (ribbed)

Ø 60 mm
Art.-Nr.: 10222009

with polyamide diverter wheel, two specially sealed ball bearings, stainless steel axle & screws, colour: black

VPE

100 pc.



90° corner (WL), PA GF (ribbed)

Ø 60 mm
Art.-Nr.: 10222010

with rubber diverter wheel, two specially sealed ball bearings, stainless steel axle & screws, colour: black

VPE

100 pc.

**90° corner, BGF****Ø 60 mm****Art.-Nr.:10222109**

with cast diverter wheel, colour: black

VPE

100 pc.

**90° corner, sst (AISI 304), with stainless steel sheet housing****Ø 60 mm****Art.-Nr.: 10222056**

with polyamide diverter wheel, two specially sealed ball bearings, stainless steel axle & screws

VPE

50 pc.

**90° corner, sst (AISI 304), with stainless steel sheet housing****Ø 60 mm****Art.-Nr.: 10222057**

with rubber diverter wheel, two specially sealed ball bearings, stainless steel axle & screws

VPE

50 pc.

**45° corner, PA GF****Ø 60 mm****Art.-Nr.: 10222063**

with rubber diverter wheel, two specially sealed ball bearings, stainless steel axle & screws, colour: black

VPE

100 pc.

**45° corner, PA GF****Ø 60 mm****Art.-Nr.:10222060**

with polyamide diverter wheel, two specially sealed ball bearings, stainless steel axle & screws, colour: black

VPE

100 pc.



180° corner, sst (AISI 304), with stainless steel sheet housing

Ø 60 mm

Art.-Nr.:10222061

with rubber diverter wheel, two specially sealed ball bearings, stainless steel axle & screws, pipe spacing: 240 mm

VPE

1 pc.



45° sheet metal corner, sst (AISI 304)

Ø 80 mm

Art.-Nr.:10222113

with cast diverter wheel

VPE

1 pc.



180° sheet metal corner, sst (AISI 304)

Ø 80 mm

Art.-Nr.:10222116

with cast diverter wheel, pipe spacing: 260 mm

VPE

1 pc.



90° diverter corner, sst (AISI 304), with stainless steel sheet housing

Ø 80 mm

Art.-Nr.:10222077

with rubber diverter wheel, two specially sealed ball bearings, stainless steel axle & screws

VPE

50 pc.



90° corner, plastic

Ø 80 mm

Art.-Nr.:10222133

with cast diverter wheel, colour: black

VPE

1 pc.

NEW



90° sheet metal corner, sst (AISI 304)

Ø 127 mm
 Art.-Nr.:10222114
 with cast diverter wheel

VPE

1 pc.

We recommend the following equipment:

NEW

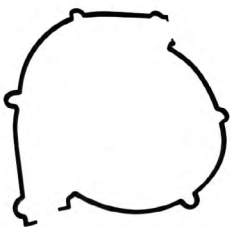


PIGOBELLO Plus filling segment kit

Ø 60 mm
 Art.-Nr.:10223173
 consisting of 5 segments

VPE

1 pc.



PIGOBELLO sealing kit

Ø 60 mm
 Art.-Nr.:10223107
 suitable for PIGOBELLO corner pieces

VPE

1 pc.



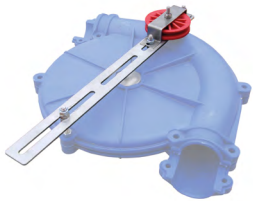
EasyCover rain cover for 90° corner

Ø 60 mm
 Art.-Nr.:10222037

complete, with sealing cord & screw set, colour black, to protect the corner-pieces
 & the pipe system from moisture

VPE

30 pc. / box.



Rope deflection to be placed on the 90° corner GRP, sst (AISI 304)

Ø 60 mm
Art.-Nr.:10222038

with plastic wheel for the release rope, unassembled;
Note: The diverter corner is not included in the scope of delivery.

VPE

200 pc. / box.



Dacromet reinforcing clamps, 2-piece, galvanised

Ø 60 mm
Art.-Nr.:800160

incl. screws, 4 half clamps per set / corner piece

VPE

60 pc. / box.



Reinforcing clamps, V2A (AISI 304), in SET for one corner-piece

Ø 60 mm
Art.-Nr.:17311018-SET

incl. V2A screws & nuts, 4 half clamps, 20 mm wide, t = 2 mm, each with 2 bores
Ø 8.5 mm

VPE

60 pc. / box.

NEW



EasyPower filling segment kit

Ø 80 mm
Art.-Nr.:10223174

consisting of 5 segments

VPE

1 pc.

06 Feed Droplet



Feed droplet, WL ECO, red

Ø 60 mm

Art.-Nr.: 10311032

with rotary slide valve & click lock for telescopic pipe 70/75 mm, drain Ø inside: 70 mm

VPE

35 pc. / box.

420 pc. / pal.



Feed droplet, WL ECO, blue

Ø 60 mm

Art.-Nr.: 10311033

with rotary slide valve & click lock for telescopic pipe 70/75 mm, drain Ø inside: 70 mm

VPE

35 pc. / box.

420 pc. / pal.



Feed droplet, WL ECO, green

Ø 60 mm

Art.-Nr.: 10311036

with rotary slide valve & click lock for telescopic pipe 70/75 mm, drain Ø inside: 70 mm

VPE

35 pc. / box.

420 pc. / pal.



Feed droplet, WL ECO, SET, red

Ø 60 mm

Art.-Nr.: 10311032-SET

consisting of: ECO feed outlet, ECO slide valve, telescopic tube 70/75 mm, Spax screw

VPE

1 pc.



Feed droplet, WL ECO, SET, blue

Ø 60 mm

Art.-Nr.: 10311033-SET

consisting of: ECO feed outlet, ECO slide valve, telescopic tube 70/75 mm, Spax screw

VPE

1 pc.



Feed droplet, WL ECO, SET, green

Ø 60 mm

Art.-Nr.: 10311036-SET

consisting of: ECO feed outlet, ECO slide valve, telescopic tube 70/75 mm, Spax screw

VPE

1 pc.



Cover blue, plastic

Ø 60 mm

Art.-Nr.:10311039

for Feed outlet, WL ECO

VPE

40 pc.



Cover red, plastic

Ø 60 mm

Art.-Nr.:10311041

for Feed outlet, WL ECO

VPE

40 pc.



Cover green, plastic

Ø 60 mm

Art.-Nr.: 10311042

for Feed outlet, WL ECO

VPE

40 pc.



EASY AIR feed valve, pneumatic

Ø 60 mm

Art.-Nr.:10311049

complete incl. funnel & cover, with hose clamps, without solenoid valve

VPE

1 pc.

**Funnel, PE****Ø 60 mm****Art.-Nr.:10311045**

for roughage valve, outlet outer Ø: 75 mm, for 60 mm pipeline

VPE

1 pc.

**cover black, plastic****Ø 60/80 mm****Art.-Nr.:10311110**

suitable for hopper 10311045

VPE

1 pc.

Feed Droplet



Feed droplet, open, black

Ø 38 mm

Art.-Nr.: 811103

with lateral flat slide valve & V2A screws, outlet inner Ø: 60 mm, width: 93 mm,
for telescopic tube 60/63 mm

VPE

50 pc.



Feed droplet, open, black

Ø 45 mm

Art.-Nr.: 811104

with lateral flat slide valve & V2A screws, outlet inner Ø: 60 mm, width: 93 mm,
for telescopic tube 60/63 mm

VPE

50 pc.



Feed droplet, open, black

Ø 50 mm

Art.-Nr.: 811105

with lateral flat slide valve & V2A screws, outlet inner Ø: 60 mm, width: 93 mm,
for telescopic tube 60/63 mm

VPE

50 pc.



Feed droplet, closed, black

Ø 60 mm

Art.-Nr.: 811107

with lateral flat slide valve & V2A screws, outlet inner Ø: 60 mm, width: 120 mm,
for telescopic tube 60/63 mm

VPE

50 pc.



Feed droplet, closed, black

Ø 63 mm

Art.-Nr.: 811108

with lateral flat slide valve & V2A screws, outlet inner Ø: 60 mm, width: 120 mm,
for telescopic tube 60/63 mm

VPE

50 pc.



Feed droplet, closed, black

Ø 75 mm

Art.-Nr.:811110

with lateral flat slide valve & V2A screws, outlet inner Ø: 60 mm, width: 120 mm,
for telescopic tube 60/63 mm

VPE

50 pc.



Feed droplet, open, in SET, black

Ø 38 mm

Art.-Nr.:811103-SET

consisting of: Feed outlet open, telescopic tube 60/63 mm

VPE

1 pc.



Feed droplet, open, in SET, black

Ø 45 mm

Art.-Nr.:811104-SET

consisting of: Feed outlet open, telescopic tube 60/63 mm

VPE

1 pc.



Feed droplet, open, in SET, black

Ø 50 mm

Art.-Nr.:811105-SET

consisting of: Feed outlet open, telescopic tube 60/63 mm

VPE

1 pc.



Feed droplet, closed, in SET, black

Ø 60 mm

Art.-Nr.:811107-SET

consisting of: Feed outlet closed, telescopic tube 60/63 mm

VPE

1 pc.



Feed droplet, closed, in SET, black

Ø 63 mm

Art.-Nr.:811108-SET

consisting of: Feed outlet closed, telescopic tube 60/63 mm

VPE

1 pc.



Feed droplet, closed, in SET, black

Ø 75 mm

Art.-Nr.:811110-SET

consisting of: Feed outlet closed, telescopic tube 60/63 mm

VPE

1 pc.



Feed droplet, blue

Ø 80 mm

Art.-Nr.: 10311137

incl. pull cord set, for Ø 75 mm downpipe

VPE

1 pc.



Feed droplet, blue, SET

Ø 80 mm

Art.-Nr.: 10311137-SET

incl. pull cord set, with telescopic tube 75/80 mm

VPE

1 pc.



Feed droplet, EasyPower, sst (AISI 304)

Ø 80 mm

Art.-Nr.: 10312000

motor operated, incl. cover, fitted

VPE

1 pc.

Droplet

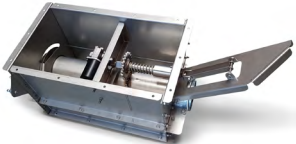
Ø 127 mm
Art.-Nr.:0112060

with shut-off valve, for pipe Ø 125 mm, with Ø 80 mm drain (internal), without drain pipe

VPE

1 pc.

NEU

Droplet, electric

Ø 127 mm
Art.-Nr.:10223124

with coupling

VPE

1 pc.

We recommend the following equipment:



Release set, red / green

Art.-Nr.:10322003

with braided rope, for operating the rotary slide on the feed outlet by pull cord, for WL feed outlet

VPE

100 pc.



Fixing band

Art.-Nr.:701110

Dimensions: 7.8 x 360 mm

VPE

100 pc.



Fixing clamp, galvanised

Art.-Nr.:801103

Clamping width 50 - 70 mm, for feed outlet

VPE

50 pc.

07 PVC Tubes & Conveyor Pipes

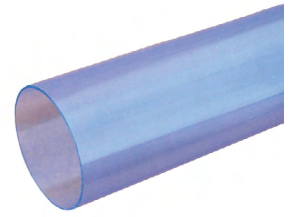
PVC Telescopic Tubes



Notes: All pipes are indicated in the outer diameter.

Name	System	Art.-Nr.:	Information	VPE
PVC Telescopic tube, transparent Ø 60/63 mm		*AP811130	with clamping ring, fixing bores, for feed outlets Ø 60 x 1.5 mm & Ø 63 x 1.2 mm, 2 x 1.00 m (max.), telescoping length: 1.90 m	25 pc. / box. 200 pc. / pal.
PVC Telescopic tube, transparent Ø 70/75 mm		10322000	with clamping ring, fixing bores, for feed outlets Ø 70 x 1.5 mm & Ø 75 x 1.5 mm, 2 x 1.00 m (max.), telescoping length: 1.90 m	20 pc. / box. 264 pc. / pal.
PVC Telescopic tube, transparent Ø 75/80 mm		10322009	with clamping ring, without fixing bores, for feed outlets Ø 75 x 1.5 mm & Ø 80 x 1.5 mm, 2 x 1.00 m (max.), telescoping length: 1.90 m	16 pc. / box. 230 pc. / pal.
PVC Telescopic tube, transparent Ø 80/85,5 mm		10322001	with clamping ring, without fixing bores, for feed outlets Ø 80 x 1.5 mm & Ø 85.5 x 1.5 mm, 2 x 1.00 m (max.), telescoping length: 1.90 m	16 pc. / box. 216 pc. / pal.

PVC Pipes



Notes: All pipes are indicated in the outer diameter.

Name	Art.-Nr.:	Information	VPE
PVC tube, transparent	814060	Ø 60 x 1.50 mm, length: 1.00 m	150 pc.
PVC tube, transparent	814060-4	Ø 60 x 1.50 mm, length: 4.00 m	150 pc.
PVC tube, transparent	814063	Ø 63 x 1.20 mm, length: 1.00 m	150 pc.
PVC tube, transparent	814063-3	Ø 63 x 1.20 mm, length: 3.00 m	150 pc.
PVC tube, transparent	814070	Ø 70 x 1.50 mm, length: 1.00 m	210 pc.
PVC tube, transparent	814070-2	Ø 70 x 1.50 mm, length: 2.00 m	100 pc.
PVC tube, transparent	814070-3	Ø 70 x 1.50 mm, length: 3.00 m	100 pc.
PVC tube, transparent	814075	Ø 75 x 1.50 mm, length: 1.00 m	189 pc.
PVC tube, transparent	814075-2	Ø 75 x 1.50 mm, length: 2.00 m	100 pc.
PVC tube, transparent	814075-3	Ø 75 x 1.50 mm, length: 3.00 m	100 pc.
PVC tube, transparent	814080	Ø 80 x 1.50 mm, length: 1.00 m	162 pc.
PVC tube, transparent	814080-3	Ø 80 x 1.50 mm, length: 3.00 m	100 pc.
PVC tube, transparent	814085	Ø 85.5 x 1.50 mm, length: 1.00 m	144 pc.
PVC tube, transparent	814085-3	Ø 85.5 x 1.50 mm, length: 3.00 m	100 pc.
PVC tube, transparent	814100-4	Ø 100 x 1.80 mm, length: 4.00 m	100 pc.
PVC tube, transparent	814110	Ø 110 x 2.50 mm, length: 2.00 m	100 pc.

Conveyor Pipes



Notes: All pipes are indicated in the outer diameter.



Name	System	Art.-Nr.:	Information	VPE
Conveyor pipe, sendzimir galvanised	Ø 38.00 x 1.20 mm	818198	outer weld joint post-galvanised, bundled & packed in timber linings, length: 6.00 m	variable
Conveyor pipe, sendzimir galvanised	Ø 45.00 x 1.25 mm	818190	outer weld joint post-galvanised, bundled & packed in timber linings, length: 6.00 m	variable
Conveyor pipe, sendzimir galvanised	Ø 50.00 x 1.50 mm	818183	outer weld joint post-galvanised, bundled & packed in timber linings, length: 6.00 m	variable
Conveyor pipe, sendzimir galvanised	Ø 60.00 x 1.25 mm	818174	outer weld joint post-galvanised, bundled & packed in timber linings, length: 6.00 m	variable
Conveyor pipe, sendzimir galvanised, material: DX51+ZM250MA, passivated	Ø 60.00 x 1.25 mm	818177-M	with magnesium content, outer weld post-injected, bundled & packed in timber linings, length: 6.00 m	variable
Conveyor pipe, sendzimir galvanised	Ø 60.00 x 1.50 mm	818175	outer weld joint post-galvanised, bundled & packed in timber linings, length: 6.00 m	variable
Conveyor pipe, sst (AISI 304)	Ø 60.30 x 1.20 mm	605304	EN10296-2, % Cr 18.1, % Ni 8.1, welded, non-annealed, surface finish: brushed, bundled and packaged in wooden fittings, length: 6.05 m	variable
Conveyor pipe, sst (AISI 304)	Ø 60.30 x 1.50 mm	605305	EN10296-2, % Cr 18.1, % Ni 8.1, welded, non-annealed, surface finish: brushed, bundled and packaged in wooden fittings, length: 6.05 m	variable
Conveyor pipe, sendzimir galvanised	Ø 70.00 x 1.50 mm	818173	outer weld joint post-galvanised, bundled & packed in timber linings, length: 6.00 m	variable
Conveyor pipe, sendzimir galvanised	Ø 80.00 x 1.50 mm	818170	outer weld joint post-galvanised, bundled & packed in timber linings, length: 6.00 m	variable
Conveyor pipe, sst (AISI 304)	Ø 80.00 x 1.50 mm	818170-V2A	EN10296-2, % Cr 18.1, % Ni 8.1, welded, non-annealed, surface finish: brushed, bundled and packaged in wooden fittings, length: 6.05 m	variable
Conveyor pipe, sendzimir galvanised	Ø 127.00 x 2.00 mm	818171	outer weld joint post-galvanised, bundled & packed in timber linings, length: 6.00 m	variable

08 Sensors

Sensors



Capacitive sensor type KCN R 30, delay after activation, operating voltage 20-250V, AC/DC

Art.-Nr.:80011017

Switching distance / time delay adjustable with potentiometer, the sensor is preset to a time delay of approx. 6 seconds and a switching distance of 1 cm, LED for operating voltage and switching status display, 2.00 m connection line

VPE

1 pc.

Capacitive sensor, iDOL 44 R, multi-range voltage, IP69

Art.-Nr.:80011016

Voltage 20-280V AC/DC, delay completely adjustable, control only possible via mobile phone, NFC required for operation

VPE

1 pc.

Capacitive sensor, DOL 41 R, without delay

Art.-Nr.:810125

Voltage 90-250V

VPE

1 pc.



Capacitive sensor, DOL 44 R, without delay

Art.-Nr.:810121

Voltage 10-30V

VPE

1 pc.

Capacitive sensor, DOL 45 R, with switch-on & switch-off delay

Art.-Nr.:80011015

Voltage 90-250V AC, On- & Off-Delay

VPE

1 pc.

Capacitive sensor, DOL 45 R, with switch-on & switch-off delay

Art.-Nr.:810123

Voltage 10-30V, On- & Off-Delay

VPE

1 pc.

GAVAZZI capacitive sensor, type VC 11 RT, with switch-off delay (delay after activation)**Art.-Nr.:810110**

230V, 10 M, length (sensor): 100 mm, Ø 30 mm, adjustable scanning distance: 4 - 12 mm, suitable for non-magnetic materials

VPE

50 pc.

GAVAZZI capacitive sensor, type VC 12 RT, with switch-on delay (delay after deactivation)**Art.-Nr.:810111**

230V, 10 M, length (sensor): 100 mm, Ø 30 mm, adjustable scanning distance: 4 - 12 mm, suitable for non-magnetic materials

VPE

50 pc.

GAVAZZI capacitive sensor, type VC 12 RN, without delay**Art.-Nr.:810112**

230V, length (sensor): 100 mm, Ø 30 mm, adjustable scanning distance: 4 - 12 mm, suitable for non-magnetic materials

VPE

50 pc.

GAVAZZI capacitive sensor, type VC 12 RTM, with switch-on delay (delay after deactivation)**Art.-Nr.: 810115**

24-230V, 10 M, length (sensor): 100 mm, Ø 30 mm, adjustable scanning distance: 4 - 12 mm

VPE

50 pc.

GAVAZZI capacitive sensor, type VC 12 RT, with switch-on delay**Art.-Nr.:810118**

24V, 10 M, length (sensor): 100 mm, Ø 30 mm, adjustable scanning distance: 4 - 12 mm, suitable for non-magnetic materials

VPE

50 pc.

GAVAZZI capacitive sensor, type VC 11 RTM, with switch-off delay (delay after activation)**Art.-Nr.:810116**

24V DC - 230V AC, length (sensor): 100 mm, Ø 30 mm, adjustable scanning distance: 4 - 12 mm, suitable for non-magnetic materials

VPE

50 pc.



We recommend the following equipment:



Mechanical limit switch in plastic housing, 220V, red

Art.-Nr.:380224

Length: 170 mm, width: 80 mm, for flour & pellets

VPE

10 pc.



Sensor holder - set with control pipe

Art.-Nr.: 10222054

Ø 60 mm, consisting of: Sensor holder, transparent control pipe, hose clamp 25 - 40 mm & 50 - 70 mm

VPE

1 pc.



Sensor holder for 2-part control pipe

Art.-Nr.: 10221021

screwable, colour: black, for 2-part viewing tube 10221019-SET

VPE

1 pc.



PG 36 screw connection

Art.-Nr.: 810155

with lock nut, for sensor mounting, length: 50 mm

VPE

10 pc.



Sensor holder, galvanised

Art.-Nr.:810156-60

Spacing between pipe & sensor bracket: 45 mm, for PG 36 screw connection

VPE

20 pc.

**Sensor holder, galvanised****Art.-Nr.:810156-75**

Spacing between pipe & sensor bracket: 45 mm, for PG 36 screw connection

VPE

20 pc.

**Sensor holder, galvanised****Art.-Nr.:1015030**with flared edge \varnothing 150 mm, for PG 36 screw connection**VPE**

1 pc.

**Sensor holder for sensor****Art.-Nr.:810128**

splash-proof, transparent, suitable for all sensors and common pipe sizes

VPE

1 pc.

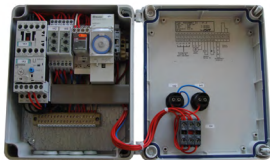
09 Electrical Control Units

Electrical Control Units



Note: Please provide us with the motor power (kW) of the drive for the following items.
Note: All controls must be protected from splash water.

FEEDOMAT II control, with manual & automatic operation



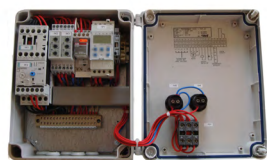
Art.-Nr.:820207

for drive unit 1.5 kW / 4.0 kW, start: manual or automatic, switch-off: manual or automatic, incl. runtime limitation & sensor override, analogue timer

VPE

1 pc.

FEEDOMAT III control, with manual & automatic operation



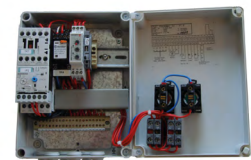
Art.-Nr.:820208

for drive unit 1.5 kW / 4.0 kW, start: manual or automatic, switch-off: manual or automatic, incl. runtime limitation & sensor override, digital timer

VPE

1 pc.

FEEDOMAT IV control, with manual & sensor operation



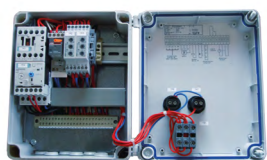
Art.-Nr.:820209

for drive unit 1.5 kW / 4.0 kW, connection possibility for two sensors, start: manual or automatic, switch-off: manual or automatic, incl. runtime limitation

VPE

1 pc.

FEEDOMAT V control, with manual & sensor operation, time-delayed



Art.-Nr.:820210

for drive unit 1.5 kW / 4.0 kW, connection possibility for a sensor, start: manual or automatic, switch-off: manual or automatic; designed for milking parlour & feeding place, for e.g. cattle

VPE

1 pc.

FEEDOMAT VI control, with manual & automatic operation, for one drive & one motorised pick-up



Art.-Nr.:820323-A

for drive unit 1.5 kW / 2.2 kW & one motorised infeed: 0.18 kW, start: manual or automatic, switch-off: manual or automatic, incl. runtime limitation & sensor override

VPE

1 pc.



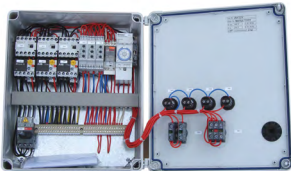
FEEDOMAT VI control, with manual & automatic operation, for one drive & one auger feeder

Art.-Nr.:820323-SP

for drive unit 1.5 kW / 2.2 kW & one auger feeder: 0.37 kW / 0.55 - 0.75 kW / 1.1 - 1.5 kW, start: manual or automatic, switch-off: manual or automatic, incl. runtime limitation & sensor override

VPE

 1 pc.



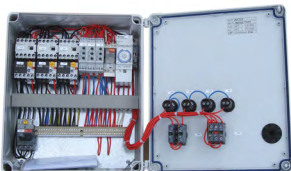
FEEDOMAT VII control, with manual & automatic operation, for manual selection of augers / infeeds

Art.-Nr.:820326

for drive unit 1.5 kW / 2.2 kW, connection possibility for two auger feeders: 0.37 kW / 0.55 - 0.75 kW / 1.1 - 1.5 kW or two motorised infeeds: 0.18 kW, start: manual or automatic, switch-off: manual or automatic, incl. runtime limitation & sensor override, suitable for up to two types of feed

VPE

 1 pc.



FEEDOMAT VIII control, with manual & automatic operation, for automatic switching of augers / loading hoppers

Art.-Nr.:820336

for drive unit 1.5 kW / 2.2 kW, connection possibility for two auger feeders: 0.37 kW / 0.55 - 0.75 kW / 1.1 - 1.5 kW or two motorised infeeds: 0.18 kW, start: manual or automatic, switch-off: manual or automatic, incl. runtime limitation & sensor override, suitable for one type of feed

VPE

 1 pc.

We recommend the following equipment:



Safety switch, IP65, in plastic housing

Art.-Nr.:820050

Dimensions: 128 x 85 x 95 mm, for interrupting the main power supply, lockable for repairs (regulation according to VDE & BG)

VPE

1 pc.



Note: To protect the material, we strongly recommend using the soft start in all chain conveyor systems (from 150 m).

Soft start up to 3.0 kW, in plastic housing



Art.-Nr.:820225

suitable for all drives

VPE

1 pc.

10 Radio Control Units

Radio Control Units



Note: Please state the motor power (kW) of the drive when ordering.

Note: All controls must be protected from splash water.



Radio control 1 drive, 400/230V, 50Hz, in plastic housing

Art.-Nr.:820615

consisting of: Receiver unit, hand-held transmitter (4 buttons), 1 x power unit

VPE

1 pc.

Radio control 1 drives, with time switch-off, 400/230V, 50Hz, in plastic housing

Art.-Nr.:820619

consisting of: Receiver unit, hand-held transmitter (4 buttons), 1 x power unit, relay for runtime limitation, with time function

VPE

1 pc.



Radio control 2 drives, 400/230V, 50Hz, in plastic housing

Art.-Nr.:820616

consisting of: Receiver unit, hand-held transmitter (4 buttons), 2 x power unit

VPE

1 pc.

Radio control 2 drives, with time switch-off, 400/230V, 50Hz, in plastic housing

Art.-Nr.:820620

consisting of: Receiver unit, hand-held transmitter (4 buttons), 2 x power unit, relay for runtime limitation, with time function

VPE

1 pc.



Radio control 3 drives, 400/230V, 50Hz, in plastic housing

Art.-Nr.:820617

consisting of: Receiver unit, hand-held transmitter (4 buttons), 3 x power unit

VPE

1 pc.

Radio control 3 drives, with time switch-off, 400/230V, 50Hz, in plastic housing

Art.-Nr.:820621

consisting of: Receiver unit, hand-held transmitter (4 buttons), 3 x power unit, relay for runtime limitation, with time function

VPE

1 pc.



Radio control 4 drives, 400/230V, 50Hz, in plastic housing

Art.-Nr.:820618

consisting of: Receiver unit, hand-held transmitter (4 buttons), 4 x power unit

VPE

1 pc.

Radio control 4 drives, with time switch-off, 400/230V, 50Hz, in plastic housing

Art.-Nr.:820622

consisting of: Receiver unit, hand-held transmitter (4 buttons), 4 x power unit, relay for runtime limitation, with time function

VPE

1 pc.

11 Dispensers

Dispensers



Dispenser WL, 6 Ltr., transparent

Ø 60/80 mm
Art.-Nr.:10311095

partly assembled, with blue funnel, cleaning flap, handle, discharge funnel & gate valve, Ø 200 mm, total length: 450 mm, for drain pipe inner Ø 70 mm

VPE

6 pc. / box.
 96 pc. / pal.



Dispenser 1-lane, 9 ltr.

Ø 60 mm
Art.-Nr.:10311070

partly assembled, consisting of: Cylinder transparent, funnel transparent, cleaning flap black, adjustment handle black, locking ball black, pipe connection red, for Ø 75 mm drain pipe

VPE

40 pc. / box.
 80 pc. / pal.



Dispenser 2-lane, 9 ltr.

Ø 60 mm
Art.-Nr.:10311068

partly assembled, consisting of: Cylinder transparent, funnel transparent, cleaning flap black, adjustment handle black, locking ball black, pipe connection black, slide valve: 1 x red & 1 x black, incl. Z-profile & bracket clips 60 mm, for Ø 75 mm drain pipe

VPE

18 pc. / box.
 36 pc. / EP

Adapter, PP, black



Ø 45 mm
Art.-Nr.: 10311129
 for WL volumetric feeder 6 ltr.

VPE

1 pc.

Adapter, PP, black



Ø 80 mm
Art.-Nr.:10311124
 for WL volumetric feeder 6 ltr.

VPE

1 pc.



Dispenser TIGSA, 6 ltr.

Ø 55 mm
Art.-Nr.: 3.000.100

Dimensions: 210 x 185 x 460 mm, with transparent funnel, outlet outer Ø: 67 mm, inner: 61.50 mm, with cleaning opening, without cable tie, adapter necessary

VPE

8 pc. / box.
 96 pc. / pal.



Dispenser TIGSA, 10 ltr.

Ø 55 mm
Art.-Nr.: 3.000.101

Dimensions: 210 x 185 x 600 mm, with transparent funnel, outlet outer Ø: 67 mm, inner: 61.50 mm, with cleaning opening, without cable tie, adapter necessary

VPE

8 pc. / box.
 96 pc. / pal.



Dispenser TIGSA, 15 ltr.

Ø 55 mm
Art.-Nr.: 3.000.102

Dimensions: 210 x 185 x 740 mm, with transparent funnel, outlet outer Ø: 67 mm, inner: 61.50 mm, with cleaning opening, without cable tie, adapter necessary

VPE

8 pc. / box.
 96 pc. / pal.



Dispenser TIGSA, 6 ltr.

Ø 60 mm
Art.-Nr.: 3.000.147

Dimensions: 210 x 185 x 460 mm, with transparent funnel, outlet outer Ø: 67 mm, inner: 61.50 mm, with cleaning opening, without cable tie, round slide valve 1.550.019 necessary

VPE

8 pc. / box.
 96 pc. / pal.



Dispenser TIGSA, 10 ltr.

Ø 60 mm
Art.-Nr.: 3.000.148

Dimensions: 210 x 185 x 600 mm, with transparent funnel, outlet outer Ø: 67 mm, inner: 61.50 mm, with cleaning opening, without cable tie, round slide valve 1.550.019 necessary

VPE

8 pc. / box.
 96 pc. / pal.



Adapter TIGSA

Ø 45 mm

Art.-Nr.: *AP2000891

with round slide valve & 2 cable ties, length: 178 mm

VPE

1 pc.



Adapter TIGSA

Ø 50 mm

Art.-Nr.: *AP2000889

with round slide valve & 2 cable ties, length: 178 mm

VPE

1 pc.



Adapter TIGSA

Ø 60 mm

Art.-Nr.: *AP20

with lateral flat slide valve & 2 cable ties, length: 178 mm

VPE

1 pc.

Round slide valve, plastic



see item info

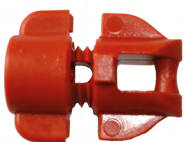
Art.-Nr.: 1.550.019

Pipe adapter suitable for 38/45/48/50/60 mm

VPE

1 pc.

Clamping nut, plastic



Art.-Nr.: 1.111.499

for fastening a feeding release cable to the main release cable, suitable for TIGSA volumetric feeders

VPE

1 pc.

Slide valve, sst (AISI 304)


see item info

Art.-Nr.:1.000.335

Pipe adapter suitable for 38/45/48/50.8 mm

VPE

1 pc.

Snap-hook, plastic


Art.-Nr.:2.560.050

with galvanised screw, suitable for TIGSA volumetric feeder

VPE

1 pc.

Rope guide, sst (AISI 304)


Art.-Nr.:2.000.105

for main release cable, suitable for TIGSA volumetric feeder

VPE

1 pc.

We recommend the following equipment:



Fixing clamp, sst (AISI 304)

Art.-Nr.: 17311014

for \varnothing 70 - 90 mm, width: 12 mm, for attaching a drain pipe to the feeder

VPE

1 pc.



Steel cable, sst (AISI 304)

Art.-Nr.: 801131

7 x 19 mm, \varnothing 3.0 mm, 4.7 kn, highly flexible, min. breaking load: 475 kg

VPE

250 m / roll



Cable guide clamp, PP

\varnothing 60 mm

Art.-Nr.: 10311113

for up to \varnothing 6 mm cable

VPE

Minimum order
quantity: 25



Cable clamps, sst (AISI 304)

Art.-Nr.: 801137

for up to \varnothing 3 mm wire cable

VPE

1 pc.

Linear drive unit for dispensers

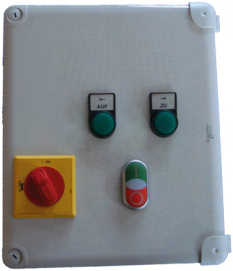


Art.-Nr.: 32013024

Dimensions: 525 x 87 x 160 mm, servomotor 230V, 250 mm stroke $V = 7.4$ mm/s,
tractive force: 3000 Newtons

VPE

1 pc.

**Control unit for linear drive unit, 0.18 kW, for dispensers****Art.-Nr.:820611**

Dimensions: 240 x 125 x 280 mm, incl. motor protection switch, 3 x time relay for (open / hold / close), status display, time adjustable, terminal strip & circuit diagram

VPE

1 pc.

**Bracket, galvanised****Art.-Nr.:10022010**

Suitable for linear drive unit

VPE

1 pc.

12 Release System

Release System

Pulley plastic, red



Art.-Nr.:805106

with galvanised holder, for wire cable up to Ø 5 mm, pulley Ø 44 mm

VPE

400 pc. / box

Pulley steel



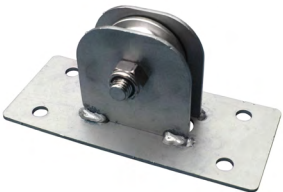
Art.-Nr.:17311002

with galvanised holder, ball bearing mounted, for wire cable up to Ø 5 mm, pulley Ø 63 mm

VPE

100 pc.

Pulley, sst (AISI 304)



Art.-Nr.:454200

with bracket, ball bearing mounted, with V2A frame made of 3 mm flat iron frame, for wire cable up to Ø 5 mm, for horizontal deflection

VPE

1 pc.

Pulley release cable, set



Art.-Nr.: 10222066

consisting of: Plastic idler pulley Ø 65 mm with galvanised bracket, eye bolt, 2 x U-bolts, wall bracket, 4 x washers, 4 x screws, 4 x dowels

VPE

1 pc.

Single pulley from Set



Art.-Nr.:10222122

3 1/2", red, rotatable with eye bolt, with two nuts

VPE

25 pc.



Pulley, galvanised

Art.-Nr.:17311006

ball bearing mounted, with galvanised frame made of 2.5 mm flat iron, pulley Ø 72 mm, for wire cable up to Ø 5 mm, for horizontal deflection, for wall fixing

VPE

25 pc.



Pulley, sst (AISI 304)

Art.-Nr.:454201

ball bearing mounted, with V2A frame made of 3 mm flat iron frame, for wire cable up to Ø 5 mm, for vertical deflection

VPE

1 pc.



Pulley Ø 89 mm

Art.-Nr.: 17311013

with galvanised holder

VPE

50 pc.



Pulley Ø 89 mm

Art.-Nr.:17311020

with galvanised wall bracket, incl. 4 square holes

VPE

40 pc.



Counterweight, galvanised

Art.-Nr.:800136

Weight 2.5 kg, for dosing triggering

VPE

1 pc.

Release lever, galvanised



Art.-Nr.:800145

without fastening screws, for dosing release

VPE

1 pc.

Return spring, galvanised



Art.-Nr.:10321000

Spring wire \varnothing 3.2 mm, spring assembly \varnothing 27.25 mm, length approx. 24.5 cm (incl. eyelets), for dosing release

VPE

50 pc.

Auger hose, PU

Art.-Nr.:13311000

Inner \varnothing : 65 mm, outer \varnothing : approx. 73 mm, microbe-proof, food-safe & hydrolysis-proof

VPE

20 m

Auger hose, PU

Art.-Nr.: 13311001

Inner \varnothing : 75 mm, outer \varnothing : approx. 83 mm, microbe-proof, food-safe & hydrolysis-proof

VPE

10 m



Flexible hose

Art.-Nr.:W090-2200

\varnothing 90 mm inside with wire auger, microbe- and hydrolysis-resistant

VPE

Flexible hose

Art.-Nr.:W110-2200

\varnothing 110 mm inside with wire auger, microbe- and hydrolysis-resistant

VPE

Flexible hose

Art.-Nr.:W160-2200

\varnothing 160 mm internal, transparent

VPE

13 Manual Winches

Manual Winches

Cable winch, painted steel



Art.-Nr.: 20011000

self-braking, tensile load top cable layer: 172 kg, tensile load bottom cable layer: 544 kg

VPE

6 pc.

Cable winch type 4AF, galvanised



4AF

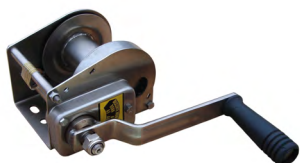
Art.-Nr.: 53403

with transmission cover, self-braking manual winch with CE certificate & GS mark, rope Ø: up to 4.0 mm (not included in the scope of delivery), reduction: 1 / 2.57, lifting force top layer: 190 kg, lifting force bottom layer: 340 kg

VPE

8 pc.

Cable winch type 4AFID, V4A (AISI 316 Ti)



4AF

Art.-Nr.: 53418

with transmission cover, self-braking manual winch with CE certificate & GS mark, rope Ø: up to 4.0 mm (not included in the scope of delivery), reduction: 1 / 2.57, lifting force top layer: 190 kg, lifting force bottom layer: 340 kg

VPE

8 pc.

Cable winch type 6AF, galvanised



6AF

Art.-Nr.: 53603

with transmission cover, self-braking manual winch with CE certificate & GS mark, rope Ø: up to 5.0 mm (not included in the scope of delivery), reduction: 1 / 3.50, lifting force top layer: 240 kg, lifting force bottom layer: 500 kg

VPE

6 pc.

Cable winch type 6AFID, V4A (AISI 316 Ti)



6AF

Art.-Nr.: 53619

with transmission cover, self-braking manual winch with CE certificate & GS mark, rope Ø: up to 5.0 mm (not included in the scope of delivery), reduction: 1 / 3.50, lifting force top layer: 240 kg, lifting force bottom layer: 500 kg

VPE

6 pc.



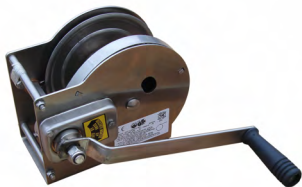
Cable winch type 8AF, galvanised

8AF
Art.-Nr.: 53803

with transmission cover, self-braking manual winch with CE certificate & GS mark,
 rope \varnothing : up to 6.0 mm (not included in the scope of delivery), reduction: 1 / 4.85,
 lifting force top layer: 270 kg, lifting force bottom layer: 650 kg

VPE

4 pc.



Cable winch type 8AFID, V4A (AISI 316 Ti)

8AF
Art.-Nr.: 53824

with transmission cover, self-braking manual winch with CE certificate & GS mark,
 rope \varnothing : up to 6.0 mm (not included in the scope of delivery), reduction: 1 / 4.85,
 lifting force top layer: 270 kg, lifting force bottom layer: 650 kg

VPE

4 pc.



Cable winch type 12AF, galvanised

12AF
Art.-Nr.: 55109

with transmission cover, self-braking manual winch with CE certificate & GS mark,
 rope \varnothing : up to 7.0 mm (not included in the scope of delivery), reduction: 1 / 9.71,
 lifting force top layer: 490 kg, lifting force bottom layer: 900 kg

VPE

3 pc.



Cable winch type 12AFID, V4A (AISI 316 Ti)

12AF
Art.-Nr.: 53119

with transmission cover, self-braking manual winch with CE certificate & GS mark,
 rope \varnothing : up to 7.0 mm (not included in the scope of delivery), reduction: 1 / 9.71,
 lifting force top layer: 490 kg, lifting force bottom layer: 900 kg

VPE

3 pc.

We recommend the following equipment:

Bracket for cable winches, hot-dip galvanised



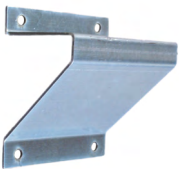
Art.-Nr.: 800118-A

Dimensions: 160 x 125 x 195 mm, without screws, suitable for type 4AF, 6AF, 8AF

VPE

1 pc.

Bracket for cable winches, hot-dip galvanised



Art.-Nr.: 800118-B

Dimensions: 205 x 135 x 195 mm, without screws, suitable for type 12AF & 20AF

VPE

1 pc.

14 Electric Winches

Electric Winches



Note: Not permitted for lifting work!



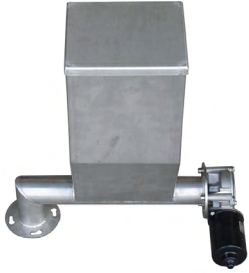
Name	Art.-Nr.:	Information
Cable drive set EV050/WSW050	AP3000	consisting of: bracket, gear motor mounting, cable pulley with stub shaft
Cable drive set EV063/WSW063	AP3002	consisting of: bracket, gear motor mounting, cable pulley with stub shaft
Cable drive set EV075/WSW075	AP3001	consisting of: bracket, gear motor mounting, cable pulley with stub shaft
Cable drive set for sloping roof	AP3005	consisting of: bracket, gear motor mounting, incl. screws, suitable for WSW050, WSW063, WSW075, galvanised Note: Cable pulley not included



Name	Art.-Nr.:	Information
Worm gear motor WSW050	EV0500012009	M063B6B5, 0.12 kW, 9 rpm, i = 100 (900 rpm), 230/400V-50Hz, hollow shaft Ø 25 mm
Worm gear motor WSW050	EV0500018014	M063B4B5, 0.18 kW, 14 rpm, i = 100 (1400 rpm), 230/400V-50Hz, hollow shaft Ø 25 mm
Worm gear motor WSW063	EV0630037009	M080A6B14, 0.37 kW, 9 rpm, i = 100 (900 rpm), 230/400V-50Hz, hollow shaft Ø 25 mm
Worm gear motor WSW063	EV0630037014	M071B4B14, 0.37 kW, 14 rpm, i = 100 (1400 rpm), 230/400V-50Hz, hollow shaft Ø 25 mm
Worm gear motor WSW063	EV0630055014	M080A4B14, 0.55 kW, 14 rpm, i = 100 (1400 rpm), 230/400V-50Hz, hollow shaft Ø 25 mm
Worm gear motor WSW075	EV0750075014PA	M080B4B14, 0.75 kW, 14 rpm, i = 100 (1400 rpm), 230/400V-50Hz, hollow shaft Ø 30 mm
Worm gear motor WSW075	EV0750110014PA	M090S4B14, 1.1 kW, 14 rpm, i = 100 (1400 rpm), 230/400V-50Hz, hollow shaft Ø 30 mm

15 Micro Dosing Dispensers

Micro Dosing Dispensers



Micro dosing dispenser, 6 ltr., sst (AISI 304)

Art.-Nr.: 10422000

with driven agitator wheel & transfer flange, 24V DC electric motor, for powdery substances

VPE



Micro dosing dispenser, 20 ltr., sst (AISI 304)

Art.-Nr.: 10422001

with driven agitator wheel & transfer flange, 24V DC electric motor, for powdery substances

VPE

We recommend the following equipment:



Name	System	Art.-Nr.:	Information
Adapter, sst (AISI 304)	Ø 45 mm	10421005	incl. inspection window, incl. screws & nuts for fastening to the feed pipe, incl. screws for fastening the small-volume feeder, for retrofitting in an existing pipe feeding system
Adapter, sst (AISI 304)	Ø 50 mm	10421004	incl. inspection window, incl. screws & nuts for fastening to the feed pipe, incl. screws for fastening the small-volume feeder, for retrofitting in an existing pipe feeding system
Adapter, sst (AISI 304)	Ø 60 mm	10421002	incl. inspection window, incl. screws & nuts for fastening to the feed pipe, incl. screws for fastening the small-volume feeder, for retrofitting in an existing pipe feeding system
Adapter, sst (AISI 304)	Ø 75 mm	10421003	incl. inspection window, incl. screws & nuts for fastening to the feed pipe, incl. screws for fastening the small-volume feeder, for retrofitting in an existing pipe feeding system
Adapter, sst (AISI 304)	Ø 90 mm	10421006	incl. inspection window, incl. screws & nuts for fastening to the feed pipe, incl. screws for fastening the small-volume feeder, for retrofitting in an existing pipe feeding system
Adapter, sst (AISI 304)	Ø 60 mm	10421000	incl. inspection window, incl. screws for fastening the small-volume feeder, for installation in a new pipe feeding system.

Cover, sst (AISI 304)



Art.-Nr.: 10421001
for pipe adapter

VPE

Control unit for micro dosing dispenser



Art.-Nr.: 820220
infinitely adjustable, U = 230V AC, output = 1.20 - 15.00V DC regulated, plastic housing IP54, mains plug with 1.30 m cable length, ready to plug in, suitable for small-volume feeders 10422000 & 10422001

VPE

16 Drinking Valves

Drinking Valves

Drinking valve Aqua Flow II



Art.-Nr.: 17411000

with integrated stopcock & V2A cover, white, without stainless steel tube,
operating pressure: 0.9 - 2.5 bar

VPE

1 pc.

Water pipe, sst (AISI 304)



Art.-Nr.: 17411001

1/2" x 1200 mm, without thread, suitable for Aqua Flow II

VPE

1 pc.

Membrane, translucent



Art.-Nr.: 17411006

without holes, suitable for Aqua Flow II

VPE

1 pc.

Drinking valve Aqualevel



Art.-Nr.: 17411023

with mounted connection adapter, for 1/2", red, without V2A pipe

VPE

1 pc.

Water pipe, V2A (AISI 304)



Art.-Nr.: 17411018

1/2" x 1200 mm, with thread on one side, suitable for Aqualevel

VPE

1 pc.



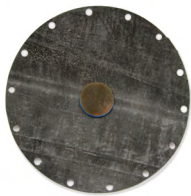
Membrane, white

Art.-Nr.: 17411019

without holes, suitable for Aqualevel

VPE

1 pc.



Membrane, black

Art.-Nr.: 17411021

with holes, suitable for Aqualevel (old version)

VPE

1 pc.



Liquid medicator, Dosatron (D25RE2)

Art.-Nr.: 90021017

Dilution range: 0.2 - 2.0 %

VPE

1 pc.



Liquid medicator, Dosatron (D25RE5)

Art.-Nr.: 90021018

Dilution range: 1.0 - 5.0 %

VPE

1 pc.

17 Fastening Material

Fastening Material

Tube end for tube 1", fibreglass-reinforced



Art.-Nr.: 802176

End section: 35 x 30 x 53 mm, DIN 2440, length: 125 mm

VPE

100 pc.

S-hook, galvanised



Art.-Nr.: 453408

Dimensions: Ø 4.0 x 48.0 mm

VPE

500 pc.

Round link chain, galvanised



Art.-Nr.: 17311001

Dimensions: 26 x 12 x 3 mm, DIN 763, working force up to 400 N (up to approx. 40 kg weight load)

VPE

Minimum purchase
50 m
200 m / box.

Round link chain, sst



Art.-Nr.: 17311021

Dimensions: 26 x 12 x 3 mm, DIN 763, working force up to 400 N (up to approx. 40 kg weight load)

VPE

Minimum purchase
50 m
200 m / box.

Ceiling hook, galvanised

Art.-Nr.: 801116

Thread: 5.5 mm, thread length: 45 mm, total length: 120 mm, material Ø: 4.4 mm, hook Ø: 16 mm

VPE

30 pc.

Ceiling hook, sst (AISI 304)

Art.-Nr.: 801117

Thread: 7.5 mm, thread length: 45 mm, total length: 120 mm, material Ø: 6.0 mm, hook Ø: 24 mm

VPE

30 pc.

Fixing clamp, sst (AISI 304)**Art.-Nr.: 17311016**

Clamping width: 25 - 40 mm, width: 9 mm, for sensor fixing in rubber holder

VPE

25 pc.

Clip pipe clamp for pipe fastening**Art.-Nr.: 17311035**

Type B, Ø 25 - 28 mm

VPE

100 pc.

Clip pipe clamp for pipe fastening**Art.-Nr.: 17311036**

Type B, Ø 31 - 35 mm

VPE

100 pc.

Clip pipe clamp for pipe fastening**Art.-Nr.: 17311037**

Type B, Ø 39 - 43 mm

VPE

100 pc.

Clip pipe clamp for pipe fastening**Art.-Nr.: 17311038**

Type B, Ø 60 - 65 mm

VPE

100 pc.

Reinforced clamp, galvanised**Art.-Nr.: 801060**

2-piece, Ø 60 mm

VPE

120 pc.



Reinforced clamp, galvanised**Art.-Nr.: 801060**

2-piece, Ø 60 mm

VPE

120 pc.

Reinforced clamp, galvanised**Art.-Nr.: 801070**

2-piece, Ø 70 mm

VPE

100 pc.

Reinforced clamp, galvanised**Art.-Nr.: 801080**

2-piece, Ø 80 mm

VPE

100 pc.

**Reinforced clamp, galvanised****Art.-Nr.: 801095**

2-piece, Ø 95 mm

VPE

50 pc.

Reinforced clamp, galvanised**Art.-Nr.: 801038**

2-piece, Ø 140 mm

VPE

25 pc.

Bracket, galvanised**Art.-Nr.: 803002**

Dimensions: 150 x 200 mm, without strut, for M8 screws

VPE

50 pc.

**Bracket, galvanised****Art.-Nr.: 803003-0**

Dimensions: 250 x 350 mm, without strut, for M8 screws

VPE

30 pc.



Angle profile, t = 3 mm, hot-dip galvanised**Art.-Nr.: 12903003005**

Shank dimension: 40.8 x 40.8 mm, with slots, length: 3000 mm

VPE

1 pc.

**Angle profile, t = 4 mm, hot-dip galvanised****Art.-Nr.: 12903003006**

Shank dimension: 40.8 x 40.8 mm, with slots, length: 3000 mm

VPE

1 pc.

Bracket, galvanised**Art.-Nr.: 803003**

Dimensions: 250 x 350 mm, with one strut, for M8 screws

VPE

25 pc.

Bracket, galvanised**Art.-Nr.: 803004**

Dimensions: 350 x 450 mm, with one strut, for M8 screws

VPE

20 pc.

Bracket, galvanised**Art.-Nr.: 803006**

Dimensions: 450 x 600 mm, with two struts, for M8 screws

VPE

13 pc.

**Bracket, galvanised****Art.-Nr.: 803032**

Square profile 40 x 1.5 mm, length: 2000 mm, for M8 screws

VPE

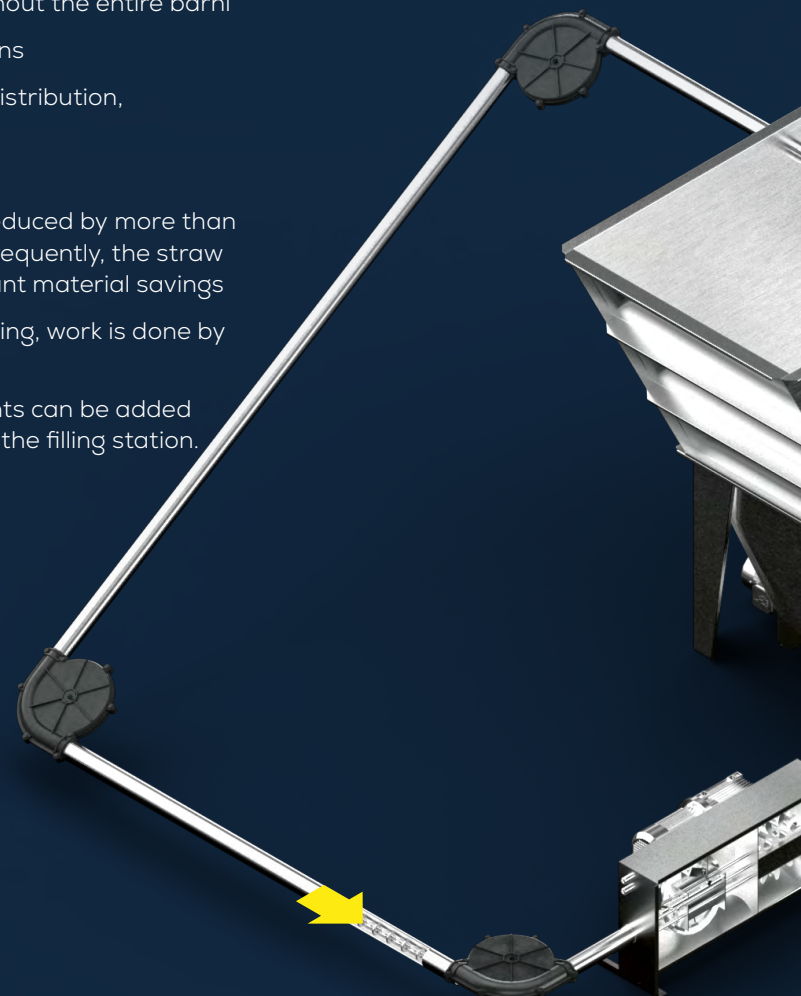
1 pc.

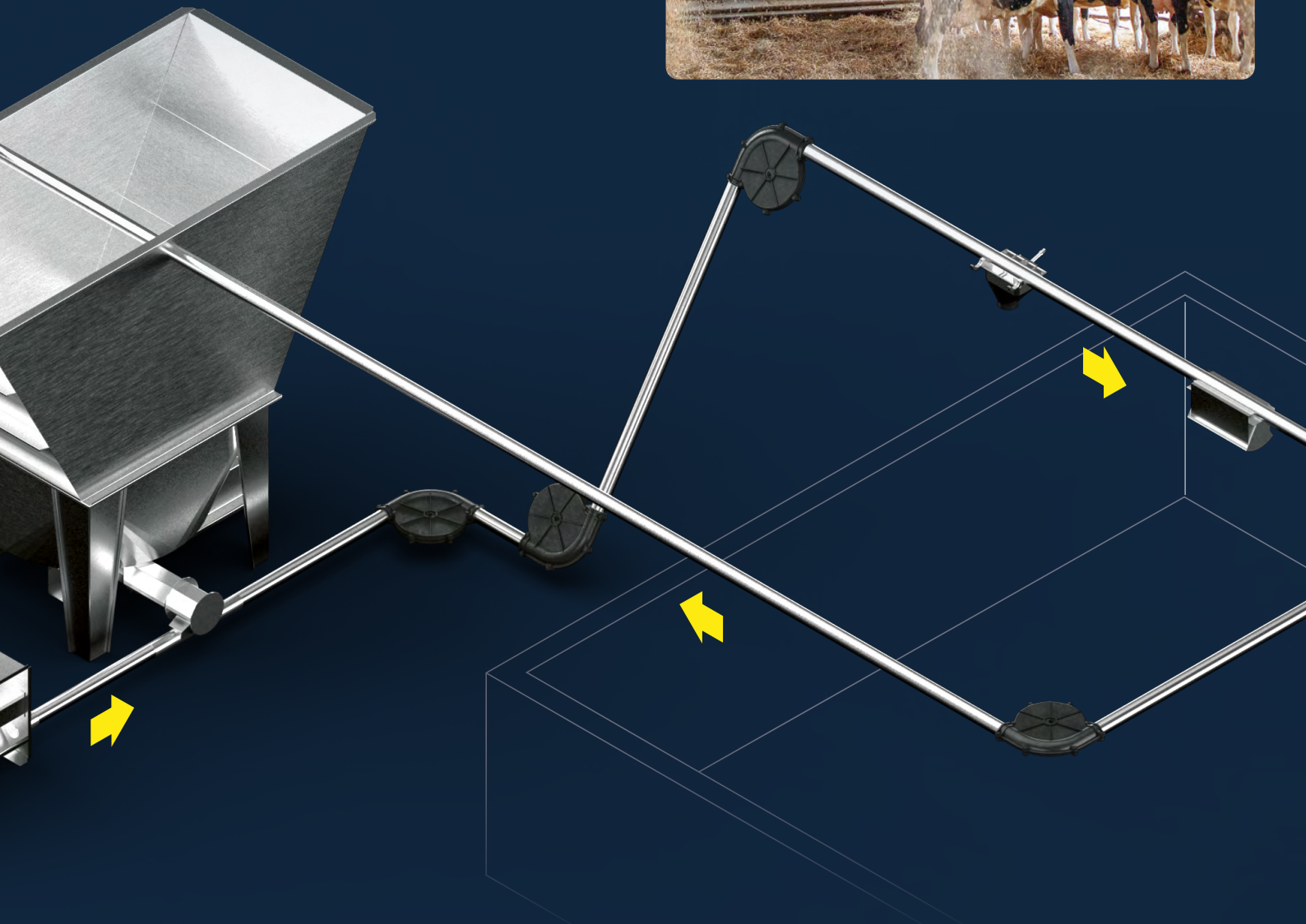
18 Bedding Systems/ TierAktiv

The fully automatic bedding system

Advantages:

- Clean and healthy air in the barn through gentle conveying with a chain system and sensible distribution of straw in the barn
- Fully automatic bedding
- Automatic straw distribution throughout the entire barn
- Easy installation, even in existing barns
- Improved quality of bedding, direct distribution, no dirty straw
- Adjustable bedding quantity
- Straw costs and labor time can be reduced by more than half. By spreading thin layers more frequently, the straw is used optimally, resulting in significant material savings
- Better hygiene through regular bedding, work is done by the machine
- Extra absorbent or disinfectant agents can be added directly to the straw and sawdust at the filling station.





Bedding Systems/TierAktiv



Straw bale opener for square bales

Art.-Nr.: 10111012

Drive and auger 1.5 kW, without electrical controller, manual chain tensioning device with 0.12 kW shaft gear motor

VPE

1 pc.



Opening roller for round bales

Art.-Nr.: 10111003

max. Ø 1.60 metres

VPE

1 pc.



Extension element

Art.-Nr.: 10111001

for an additional bale, plastic-coated design, bale size 2.4 x 1.2 x 0.9 m, max. 3 bales per drive

VPE

1 pc.



Transfer

Art.-Nr.: 10111004

Collecting trough for feeding through a conveyor chain, pipe Ø = 60/80/127 mm, distribution auger with 1.5 kW

VPE

1 pc.



Stone removal system

Art.-Nr.: 10111006

Collection trough below the separating rollers, 1.5 kW removal auger conveyor, drawer for removing foreign objects

VPE

1 pc.



Dedusting system

Art.-Nr.: 10111009

for dust reduction, integrated in 10111006, fan power 1.5 kW, dust cyclone

VPE

1 pc.



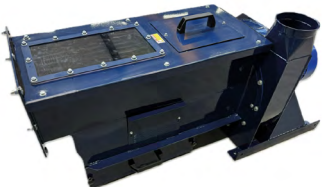
Magnetic cutter

Art.-Nr.: 10111010

integrated into 10111006

VPE

1 pc.



Straw mill

Art.-Nr.: 10111011

7.5 kW, easy to change sieves, three different sieves included, conveying range 35 metres, without blowing power

VPE

1 pc.



Storage container, galvanised design

Art.-Nr.: 10111015

Capacity approx. 3.5m³, feed-through for conveyor chain 60/80/127mm, can be extended to two chains, agitator with own 1.1 kW drive

VPE

1 pc.



Dust cyclone, complete sst

Art.-Nr.: 10111016

suitable for installation on the receiver tank with the straw mill 10111011

VPE

1 pc.



Straw intake 4 cbm for 1 conveyor system

Ø 80 mm
Art.-Nr.: 10111070

Feeding system, base frame, assembly for feeding system, auger substructure, suitable for sawdust, straw meal, straw pellets

VPE

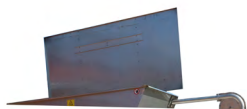


Straw intake 4 cbm for 2 conveyor systems

Ø 80 mm
Art.-Nr.: 10111085

Feeding system base frame, version right left, assembly for feeding system, 2 auger substructures, extension type 160 - 220 mm, suitable for sawdust, straw meal, straw pellets

VPE



Cover for straw intake, sst (AISI 304)

Ø 80 mm
Art.-Nr.: 10111076

for attachment 4.1 x 5 m³, operation via manual cable winch

VPE

1 pc.



Straw valve TierAktiv, plastic

Ø 80 mm
Art.-Nr.: 10312007

incl. V2A cylinder and funnel Ø 150 mm

VPE

1 pc.



Straw dispenser 15 ltr., V2A

Ø 80 mm
Art.-Nr.: 10312004

with bucket closure, completely fitted

VPE

1 pc.



Straw dispenser 30 ltr., V2A

Ø 80 mm
 Art.-Nr.: 10312009
 with bucket closure, completely fitted

VPE

1 pc.



Straw dispenser 2 ltr., plastic

Ø 80 mm
 Art.-Nr.: 10312011
 with bucket closure, completely fitted, can be shut off

VPE

1 pc.



Corn intake station, 100 l, sst

Ø 80 mm
 Art.-Nr.: 1011104
 with ribbon screws and feeding auger

VPE

1 pc.



Lime loading hopper

Ø 80 mm
 Art.-Nr.:
 consisting of the following items:

VPE

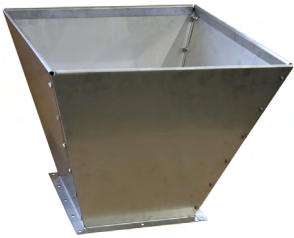


Loading hopper, sst (AISI 304), single-circuit

Ø 80 mm
 Art.-Nr.: 10111043
 with motor-driven longitudinal auger (0.18 kW)

VPE

1 pc.



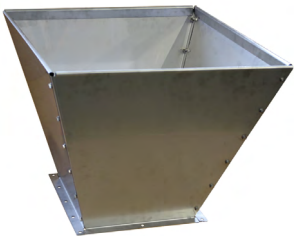
100 ltr. container, sst (AISI 304)

Ø 60 mm
Art.-Nr.: 800502

Dimensions: 570 x 570 x 490 mm, with PA slide valve guide, incl. slide valve & screws

VPE

1 pc.



350 ltr. container, sst (AISI 304)

Ø 60 mm
Art.-Nr.: 800602

Dimensions: 730 x 730 x 780 mm, with PA slide valve guide, incl. slide valve & screws

VPE

1 pc.



Cover, sst (AISI 304)

Ø 60 mm
Art.-Nr.: 10121045

1.5 mm, incl. bores for handle, for 350 ltr. container

VPE

1 pc.



Control unit for pneumatic valves

Art.-Nr.: 820299

The following components are activated:

- 1 x 2.2 kW agitator blade
- 1 x 1.5 kW stuffing auger
- 1 x 2.2 kW chain drive unit
- Selectable with 20 pneumatic valves
- 1 x start single dosing

VPE

1 pc.



Control unit for straw dosing with linear drive unit

Art.-Nr.: 820282

Control for straw dosing

VPE

1 pc.

19 Pneumatics

Pneumatics

Nipple plug for 10/8 hose



Art.-Nr.: 10411033

Ø 7.2 mm with union nut

VPE

1 pc.

Pneumatic hose 10/8

Art.-Nr.: 10411022

PE, natural

VPE

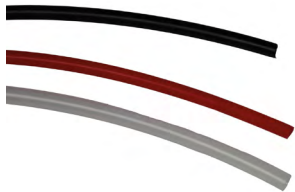
50 m

Pneumatic hose 8/6

Art.-Nr.: 10411024

PE, black

VPE



Pneumatic hose 6/4

Art.-Nr.: 10411025

PE, red

VPE

100 m

Pneumatic hose 6/4

Art.-Nr.: 10411025-W

PE, white (crystal clear)

VPE

50 m

Pneumatic hose 6/4

Art.-Nr.: 10411026

PE, black

VPE

100 m

Fitting 1/4" brass
**Art.-Nr.: 10411017**

for pneumatic hose 10/8, pluggable

VPE

Fitting 1/4" brass
**Art.-Nr.: 10411016**

for pneumatic hose 8/6, pluggable

VPE

Pressure combi control unit with pressure gauge
**Art.-Nr.: 10411065**

1/4" connection thread, max. operating pressure 15 bar, pressure control range 0-8 bar

VPE

Silencers, brass
**Art.-Nr.: 10411018**

1/4" thread

VPE

Magnetic valve 3/2
**Art.-Nr.: 10411012**

24V DC, 1/4" pipe connection, with LED plug

VPE

T-piece 10/10/10**Art.-Nr.: 10411027**

pluggable

VPE

T- piece 8/8/8**Art.-Nr.: 10411028**

pluggable

VPE

4-fold valve terminal**Art.-Nr.: 10411040**

5/2 directional control valve incl. screw-in nipples

VPE

6-fold valve terminal**Art.-Nr.: 10411039**

5/2 directional control valve incl. screw-in nipples

VPE

8-fold valve terminal**Art.-Nr.: 10411041**

5/2 directional control valve incl. screw-in nipples

VPE



Screw plug for 6/4 plug connector

Art.-Nr.: 10411043

Plastic, black

VPE



Hose cutter, aluminium

Art.-Nr.: 10411066

for hoses 3 - 12 mm

VPE



Water separator

Art.-Nr.: 10411068

1/4" connection thread, max. flow rate 1500 NI/min, max. condensate volume 22 cm³

VPE



Mounting angle bracket

Art.-Nr.: 10411069

for water separator (10411068)

VPE

20 Conveyor Auger WVS Witte Vario System

Conveyor Augers WVS Ø 75

Drive unit 75 mm, without G motor



Ø 75 mm
Art.-Nr.: 0107000

Auger head housing with outlet Ø 150 mm, head connection, clamp and screw set, sleeve 24/35 mm and thrust pin, packed in box. This unit is without gear motor.

VPE

1 pc.

Mechanical drive unit 75 mm, without G motor



Ø 75 mm
Art.-Nr.: 0107990

Housing with outlet Ø 75 mm and limit switch, clamp and screw set, sleeve 24/35 mm and thrust pin. This unit is without gear motor.

VPE

1 pc.

Gear motor NN101 M080B4, 0.75 kW, 370 rpm



Ø 75 mm
Art.-Nr.: NN1010075370X2

380-480V-50/60Hz, B5, i = 3.78 (1500 rpm), shaft 24 x 135 mm with bore, flange 140 x 95 x 115 mm, terminal box right side

VPE

1 pc.

Gear motor NN101 M090S4, 1.1 kW, 370 rpm



Ø 75 mm
Art.-Nr.: NN1010110370X2

380-480V-50/60Hz, B5, i = 3.78 (1500 rpm), shaft 24 x 135 mm with bore, flange 140 x 95 x 115 mm, terminal box right side

VPE

1 pc.

NEW

Gear motor GPX M080B4, 0.75 kW, 370 rpm



Ø 75 mm
Art.-Nr.: GPX0010075370X2

380-480V-50/60Hz, B5, i = 3.79 (1500 rpm), shaft 24 x 135 mm with bore, flange 140 x 95 x 115 mm, terminal box right side

VPE

1 pc.

NEW

**Gear motor GPX M090S4, 1.1 kW, 370 rpm**

Ø 75 mm

Art.-Nr.: GPX0010110370X2

380-480V-50/60Hz, B5, i = 3.79 (1500 rpm), shaft 24 x 135 mm with bore, flange 140 x 95 x 115 mm, terminal box right side

VPE

1 pc.

PVC pipe

Ø 75 mm

Art.-Nr.: 01070301

Dimensions: 75 x 68.5 mm, lugged on one side, with clamping slot, length: 3 m

VPE

from 1 pc.

**PVC pipe**

Ø 75 mm

Art.-Nr.: 0107030

Dimensions: 75 x 67.8 mm, lugged on one side, without clamping slot, length: 3 m

VPE

from 1 pc.



NEW

**Click Pipe, Repair pipe**

Ø 75 mm

Art.-Nr.: 01070301-CP

straight, half cup, length: 1000 mm, for Ø 75 mm PVC pipe

VPE

1 pc.

NEW

**Control pipe**

Ø 75 mm

Art.-Nr.: 13122058-SET

Transparent plastic housing incl. screws

VPE

1 pc.

PVC pipe bend 45°

Ø 75 mm
Art.-Nr.: 01070351

Dimensions: 75 x 68.5 mm, lugged on one side, R1500, with clamping slot, length: 1280 mm

VPE

from 1 pc.

PVC pipe bend 45° short

Ø 75 mm
Art.-Nr.: 0107035

Dimensions: 75 x 67.8 mm, lugged on one side, R1500, without clamping slot, length: 1300 mm

VPE

from 1 pc.

PVC pipe bend 45° long

Ø 75 mm
Art.-Nr.: 01070352

Dimensions: 75 x 67.8 mm, lugged on one side, RR1750, without clamping slot, length: 2450 mm

VPE

from 1 pc.

NEW

Click Pipe, 45° repair pipe bend

Ø 75 mm
Art.-Nr.: 01070351-CP

complete, length: 1000 mm, for Ø 75 mm PVC pipe

VPE

1 pc.

Pipe bend 45°, galvanised

Ø 75 mm
Art.-Nr.: 01070355

Dimensions: 76.1 x 2.9 mm, R1500, length: 1250 mm

VPE

1 pc.



Flex auger 75 mm

Ø 75 mm

Art.-Nr.: 6040

Dimensions: 60 x 40 x 36 mm, 12 x 4 mm

VPE

from 1 m



Fixing clamp, sst

Ø 75 mm

Art.-Nr.: 17311014

70 - 90 mm, 12 mm wide, for pipe 75 x 68.5 mm

VPE

1 pc.



Tube coupler

Ø 75 mm

Art.-Nr.: 0107045

for pipe 75 x 68.5 mm, for connecting two smooth pipe ends

VPE

1 pc.



PVC double-coupler

Ø 75 mm

Art.-Nr.: 10223079

t = 3.5 mm, with slot, with central pipe stop inside, length: 180 mm, for connecting smooth PVC pipe ends

VPE

1 pc.



Silo hopper auger 75 mm

Ø 75 mm

Art.-Nr.: 0107020

0 - 45° adjustable, GRP funnel, blue, Ø 550 mm, half moon, slide valve guide, rain guard, slide, lower section with flange plate for expansion shaft, screw set and sealing putty

VPE

1 pc.



Expansion shaft

Ø 75 mm
 Art.-Nr.: 0107040
 with end bearing, for auger

VPE

1 pc.



Expansion shaft

Ø 75 mm
 Art.-Nr.: 01070401
 with plain bearing, for auger

VPE

1 pc.



Hopper with attachment

Ø 75 mm
 Art.-Nr.: 0107220

Dimensions: 500 x 500 x 1100 mm with cover, incl. lower section, slide valve, slide valve guide, fitted, approx. 150 ltr. Capacity, for auger

VPE

1 pc.



Inlet Ø 150 mm

Ø 75 mm
 Art.-Nr.: 0107050

with flared edge, expansion shaft, end bearing and head connection, for auger

VPE

1 pc.



Inlet Ø 150 mm

Ø 75 mm
 Art.-Nr.: 01070501

with expansion shaft with plain bearing and head connection, for auger

VPE

1 pc.



Auger outlet complete, blue

Ø 75 mm
Art.-Nr.: 13211035

Drain housing, rotary slide valve, cover, pull handle set red/green, for Ø 75 mm downpipe

VPE

1 pc.



Outlet

Ø 75 mm
Art.-Nr.: 0107060

with shut-off valve, for pipe Ø 75 mm, with Ø 60 mm drain (internal), without drain pipe

VPE

1 pc.

NEW



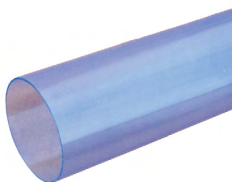
Silo slider

Ø 75 mm
Art.-Nr.: 10121084

Remote control for silo hopper on auger with crank, complete.

VPE

1 pc.

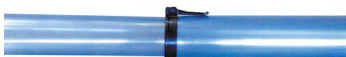


PVC tube Ø 70 mm, PVC, transparent

Ø 75 mm
Art.-Nr.: 814070
Ø 70 x 1.50 mm, length: 1.00 m

VPE

1 m



PVC tube telescopic, PVC, transparent

Ø 75 mm
Art.-Nr.: 10322000

with clamping ring & fixing holes for outlets: Ø 70 x 1.5 mm & Ø 75 x 1.5 mm, 2 x 1.00 m (max.), telescopic length: 1.90 m

VPE

1 pc.

Boot box for silo hopper 75 mm, galvanised


Ø 75 mm
Art.-Nr.: 0107120
 with flange plate for expansion shaft

VPE

 1 pc.

Boot box for silo hopper 75 mm, galvanised


Ø 75 mm
Art.-Nr.: 0107121
 continuous

VPE

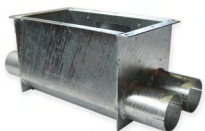
 1 pc.

Boot box for silo hopper 75 mm, 2-fold, galvanised


Ø 75 mm
Art.-Nr.: 0107130
 1 direction, with flange plate for expansion shaft

VPE

 1 pc.

Boot box for silo hopper 75 mm, 2-fold, galvanised


Ø 75 mm
Art.-Nr.: 0107131
 continuous

VPE

 1 pc.

Boot box for silo hopper 75 mm, 2-fold, galvanised


Ø 75 mm
Art.-Nr.: 0107132
 2 directions, with flange plate for expansion shaft

VPE

 1 pc.

Boot box for silo hopper 75 mm, 2-fold, galvanised**Ø 75 mm****Art.-Nr.: 0107133**

1 x flange plate for expansion shaft, 1 x continuous

VPE

1 pc.

Conveyor Augers WVS Ø 89

Drive unit 90 mm, without G motor**Ø 89 mm****Art.-Nr.: 0109000**

Auger head housing with outlet Ø 150 mm, head connection, clamp and screw set, sleeve 24/45 mm and thrust pin, packed in box. This unit is without gear motor.

VPE

1 pc.

Mechanical drive unit 90 mm, without G motor**Ø 89 mm****Art.-Nr.: 0109990**

Housing with outlet Ø 75 mm with limit switch, head connection, clamp and screw set, sleeve 24/45 mm and thrust pin. This unit is without gear motor.

VPE

1 pc.

Gear motor NN101 M080B4, 0.75 kW, 370 rpm**Ø 89 mm****Art.-Nr.: NN1010075370X2**

380-480V-50/60Hz, B5, i = 3.78 (1500 rpm), shaft 24 x 135 mm with bore, flange 140 x 95 x 115 mm, terminal box right side

VPE

1 pc.

Gear motor NN101 M090S4, 1.1 kW, 370 rpm



Ø 89 mm

Art.-Nr.: NN1010110370X2

380-480V-50/60Hz, B5, i = 3.78 (1500 rpm), shaft 24 x 135 mm with bore, flange 140 x 95 x 115 mm, terminal box right side

VPE

1 pc.

NEU

Gear motor GPX M080B4, 0.75 kW, 370 rpm



Ø 89 mm

Art.-Nr.: GPX0010075370X2

380-480V-50/60Hz, B5, i = 3.79 (1500 rpm), shaft 24 x 135 mm with bore, flange 140 x 95 x 115 mm, terminal box right side

VPE

1 pc.

NEU

Gear motor GPX M090S4, 1.1 kW, 370 rpm



Ø 89 mm

Art.-Nr.: GPX0010110370X2

380-480V-50/60Hz, B5, i = 3.79 (1500 rpm), shaft 24 x 135 mm with bore, flange 140 x 95 x 115 mm, terminal box right side

VPE

1 pc.

PVC pipe



Ø 89 mm

Art.-Nr.: 01090301

Dimensions: 89 x 82 mm, lugged on one side, with clamping slot, length: 3 m

VPE

from 1 pc.

PVC pipe



Ø 89 mm

Art.-Nr.: 0109030

Dimensions: 90 x 81.4 mm, lugged on one side, without clamping slot, length: 3 m

VPE

from 1 pc.

NEW

**Control pipe, 2-piece****Ø 89 mm****Art.-Nr.: 13122059-SET**

Transparent plastic housing incl. screws

VPE

1 pc.

PVC pipe bend 45°**Ø 89 mm****Art.-Nr.: 01090351**

Dimensions: 89 x 82 mm, lugged on one side, R1568, with clamping slot, length: 1320 mm

VPE

from 1 pc.

**PVC pipe bend 45° short****Ø 89 mm****Art.-Nr.: 0109035**

Dimensions: 90 x 81.4 mm, lugged on one side, R1600, without clamping slot, length: 1350 mm

VPE

from 1 pc.

**PVC pipe bend 45° long****Ø 89 mm****Art.-Nr.: 01090352**

Dimensions: 90 x 81.4 mm, lugged on one side, R2310, without clamping slot, length: 2550 mm

VPE

from 1 pc.

**Pipe bend 45°, galvanised****Ø 89 mm****Art.-Nr.: 01090355**

Dimensions: 88.9 x 3.2 mm, R1700, length: 1370 mm

VPE

1 pc.





Flex auger 90 mm

Ø 89 mm

Art.-Nr.: 7052

Dimensions: 70 x 52 x 46.5 mm, 11.7 x 4.3 mm

VPE

from 1 m



Fixing clamp, sst

Ø 89 mm

Art.-Nr.: 01090321

90 - 110 mm, 12 mm wide, for pipe 89 x 82 mm

VPE

1 pc.



Tube coupler

Ø 89 mm

Art.-Nr.: 0109045

for pipe 89 x 82 mm, for connecting two smooth pipe ends

VPE

1 pc.



PVC double-coupler

Ø 89 mm

Art.-Nr.: 10223080

t = 3.5 mm, with slot, with central pipe stop inside, length: 180 mm, for connecting smooth PVC pipe ends

VPE

1 pc.



Silo hopper auger 90 mm

Ø 89 mm

Art.-Nr.: 0109020

0 - 45° adjustable, GRP funnel, blue, Ø 550 mm, half moon, slide valve guide, rain guard, slide, lower section with flange plate for expansion shaft, screw set and sealing putty

VPE

1 pc.



Expansion shaft

Ø 89 mm
Art.-Nr.: 0109040
 with end bearing, for auger

VPE

1 pc.



Expansion shaft

Ø 89 mm
Art.-Nr.: 01090401
 with plain bearing, for auger

VPE

1 pc.



Hopper with attachment

Ø 89 mm
Art.-Nr.: 0109220

Dimensions: 500 x 500 x 1100 mm with cover, incl. bottom section, slide valve, slide valve guide, fitted, for auger

VPE

1 pc.



Inlet Ø 150 mm

Ø 89 mm
Art.-Nr.: 0109050

with flared edge, expansion shaft, end bearing and head connection, for auger

VPE

1 pc.



Inlet Ø 150 mm

Ø 89 mm
Art.-Nr.: 01090501

with expansion shaft with plain bearing and head connection, for auger

VPE

1 pc.



Auger outlet complete, blue

Ø 89 mm
Art.-Nr.: 13211036

Drain housing, rotary slide valve, cover, pull handle set red/green, for Ø 75 mm downpipe

VPE

1 pc.



Outlet

Ø 89 mm
Art.-Nr.: 0109060

with shut-off valve, for pipe Ø 90 mm, with Ø 63 mm drain (internal), without drain pipe

VPE

1 pc.

NEW



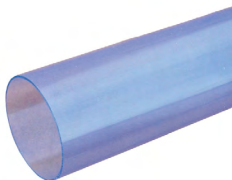
Silo slider

Ø 89 mm
Art.-Nr.: 10121084

Remote control for silo hopper on auger with crank, complete.

VPE

1 pc.



PVC tube, transparent, PVC

Ø 89 mm
Art.-Nr.: 814075

Ø 75 x 1.50 mm, length: 1.00 m

VPE

189 pc.



PVC tube telescopic, PVC, transparent

Ø 89 mm
Art.-Nr.: 10322009

with clamping ring & without fixing bores, for feed outlets Ø 75 x 1.5 mm & Ø 80 x 1.5 mm, 2 x 1.00 m (max.), telescoping length: 1.90 m

VPE

1 pc.

Boot box for silo hopper 90 mm, galvanised

Ø 89 mm
Art.-Nr.: 0109120
 with flange plate for expansion shaft

VPE

1 pc.

Boot box for silo hopper 90 mm, galvanised

Ø 89 mm
Art.-Nr.: 0109121
 continuous

VPE

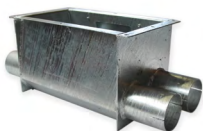
1 pc.

Boot box for silo hopper 90 mm, 2-fold, galvanised

Ø 89 mm
Art.-Nr.: 0109130
 1 direction, with flange plate for expansion shaft

VPE

1 pc.

Boot box for silo hopper 90 mm, 2-fold, galvanised

Ø 89 mm
Art.-Nr.: 0109131
 continuous

VPE

1 pc.

Boot box for silo hopper 90 mm, 2-fold, galvanised

Ø 89 mm
Art.-Nr.: 0109132
 2 directions, with flange plate for expansion shaft

VPE

1 pc.

Boot box for silo hopper 90 mm, 2-fold, galvanised**Ø 89 mm****Art.-Nr.: 0109133**

1 x flange plate for expansion shaft, 1 x continuous

VPE

1 pc.

Conveyor Augers WVS Ø 127

Drive unit 125 mm, without G motor**Ø 127 mm****Art.-Nr.: 0112000**

Auger head housing with outlet Ø 150 mm, head connection, clamp and screw set, sleeve 24/70 mm with clamping pin and thrust pin, flange plate for gear motor, packed in box. This unit is without gear motor.

VPE

1 pc.

Mechanical drive unit 125 mm, without G motor**Ø 127 mm****Art.-Nr.: 0112995**

Housing with outlet Ø 150 mm and limit switch, clamp and screw set, sleeve 24/70 mm, clamping pin and thrust pin. This unit is without gear motor.

VPE

1 pc.

Gear motor NN101 M090S4, 1.1 kW, 370 rpm**Ø 127 mm****Art.-Nr.: NN1010110370X2**

380-480V-50/60Hz, B5, i = 3.78 (1500 rpm), shaft 24 x 135 mm with bore, flange 140 x 95 x 115 mm, terminal box right side

VPE

1 pc.

Gear motor NN101 M090L4, 1.5 kW, 370 rpm



Ø 127 mm

Art.-Nr.: NN1010150370X2

380-480V-50/60Hz, B5, i = 3.78 (1500 rpm), shaft 24 x 135 mm with bore, flange
140 x 95 x 115 mm, terminal box right side

VPE

1 pc.

NEW

Gear motor GPX M090S4, 1.1 kW, 370 rpm



Ø 127 mm

Art.-Nr.: GPX0010110370X2

380-480V-50/60Hz, B5, i = 3.79 (1500 rpm), shaft 24 x 135 mm with bore, flange
140 x 95 x 115 mm, terminal box right side

VPE

1 pc.

NEW

Gear motor GPX M090L4, 1.5 kW, 370 rpm



Ø 127 mm

Art.-Nr.: GPX0010150370X2

380-480V-50/60Hz, B5, i = 3.79 (1500 rpm), shaft 24 x 135 mm with bore, flange
140 x 95 x 115 mm, terminal box right side

VPE

1 pc.

PVC pipe



Ø 127 mm

Art.-Nr.: 01120301

Dimensions: 127 x 117 mm, lugged on one side, with clamping slot, length: 3 m

VPE

from 1 pc.

PVC pipe



Ø 127 mm

Art.-Nr.: 0112031

Dimensions: 125 x 113 mm, lugged on one side, with clamping slot, length: 3 m

VPE

from 1 pc.



PVC pipe bend 45° short

Ø 127 mm
Art.-Nr.: 01120351

Dimensions: 127 x 117 mm, lugged on one side, R1700, with clamping slot, length: 1400 mm

VPE

from 1 pc.



PVC pipe bend 45° long

Ø 127 mm
Art.-Nr.: 0112037

Dimensions: 125 x 113 mm, lugged on one side, RR2750, without clamping slot, length: 2500 mm

VPE

from 1 pc.



Pipe bend 45°, galvanised

Ø 127 mm
Art.-Nr.: 01120355

Dimensions: 127 x 4.0 mm, R1800, length: 1400 mm

VPE

1 pc.



Flex auger 125 mm

Ø 127 mm
Art.-Nr.: 10070

Dimensions: 100 x 70 x 72 mm, 14 x 5 mm

VPE

from 1 m



Pipe bracket clamp, 2-piece, galvanised

Ø 127 mm
Art.-Nr.: 01120321

Ø 130 mm, for pipe Ø 125 mm

VPE

1 pc.

Pipe bracket clamp, 2-piece, galvanised



Ø 127 mm
Art.-Nr.: 801038
 Ø 140 mm, for pipe Ø 127 mm

VPE

1 pc.

Tube coupler



Ø 127 mm
Art.-Nr.: 0112045
 incl. 2 pieces reinforcing plates, screws and nuts, for connecting two smooth pipe ends

VPE

1 pc.

PVC double-coupler



Ø 127 mm
Art.-Nr.: 10223081
 t = 3.5 mm, with slot, length: 255 mm, for connecting smooth PVC pipe ends

VPE

1 pc.

Silo hopper auger 125 mm



Ø 127 mm
Art.-Nr.: 0112020
 0 - 45° adjustable, GRP funnel, blue, Ø 550 mm, half moon, slide valve guide, rain guard, slide, lower section with flange plate for expansion shaft, screw set and sealing putty

VPE

1 pc.

Expansion shaft



Ø 127 mm
Art.-Nr.: 0112040
 with end bearing, for auger

VPE

1 pc.



Expansion shaft

Ø 127 mm
Art.-Nr.: 01120401
 with plain bearing, for auger

VPE

1 pc.



Hopper with attachment

Ø 127 mm
Art.-Nr.: 0112220
 Dimensions: 500 x 500 x 1100 mm with cover, incl. bottom section, slide valve,
 slide valve guide, fitted

VPE

1 pc.



Inlet Ø 150 mm

Ø 127 mm
Art.-Nr.: 0112050
 with expansion shaft, end bearing and head connection, for auger

VPE

1 pc.



Inlet Ø 150 mm

Ø 127 mm
Art.-Nr.: 01120501
 with expansion shaft with plain bearing and head connection, for auger

VPE

1 pc.



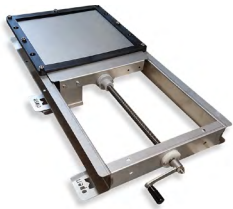
Outlet

Ø 127 mm
Art.-Nr.: 0112060
 with shut-off valve, for pipe Ø 125 mm, with Ø 80 mm drain (internal), without
 drain pipe

VPE

1 pc.

NEW

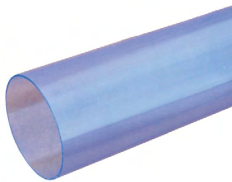
**Silo slider**

Ø 127 mm
Art.-Nr.: 10121084

Remote control for silo hopper on auger with crank, complete.

VPE

1 pc.

PVC tube Ø 110 mm, PVC, transparent

Ø 127 mm
Art.-Nr.: 814110

Ø 110 x 2.50 mm, length: 2.00 m

VPE

100 pc.

Boot box for silo hopper 125 mm, galvanised

Ø 127 mm
Art.-Nr.: 0112120

with flange plate for expansion shaft

VPE

1 pc.

Boot box for silo hopper 125 mm, galvanised

Ø 127 mm
Art.-Nr.: 0112121

continuous

VPE

1 pc.

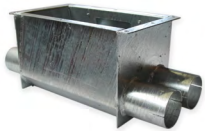
Boot box for silo hopper 125 mm, 2-fold, galvanised

Ø 127 mm
Art.-Nr.: 0112130

1 direction, with flange plate for expansion shaft

VPE

1 pc.

Boot box for silo hopper 125 mm, 2-fold, galvanised


Ø 127 mm
 Art.-Nr.: 0112131
 continuous

VPE

 1 pc.

Boot box for silo hopper 125 mm, 2-fold, galvanised


Ø 127 mm
 Art.-Nr.: 0112132
 2 directions, with flange plate for expansion shaft

VPE

 1 pc.

Boot box for silo hopper 125 mm, 2-fold, galvanised


Ø 127 mm
 Art.-Nr.: 0112133
 1 x flange plate for expansion shaft, 1 x continuous

VPE

 1 pc.

21 Conveyor Auger WVS Equipment

Conveyor Auger WVS Equipment

Sensor switch VC11RT23010M with holder



Art.-Nr.: *AP0004

with 70 mm holder and PG screwed connection

VPE

1 pc.

Sensor switch VC12RT23010M with holder



Art.-Nr.: *AP00041

with 70 mm holder and PG screwed connection

VPE

1 pc.

Sensor switch VC12RT23010M with pipe



Art.-Nr.: *AP0005

with pipe \varnothing 150 mm, clamping ring and PG screwed connection

VPE

1 pc.

Control panel with runtime limitation, 2 sensors



Art.-Nr.: 820252

Motor protection switch (Manual/O/Autom.) with contactor, reset button in plastic housing, for 2 sensor switches for motor output 0.55 - 0.75 kW

VPE

1 pc.

Control panel with runtime limitation, 2 sensors



Art.-Nr.: 820250

Motor protection switch (Manual/O/Autom.) with contactor, reset button in plastic housing, for 2 sensor switches for motor output 1.1 - 1.5 kW

VPE

1 pc.



Control panel with runtime limitation, 1 sensor

Art.-Nr.: 820253

Motor protection switch (stop/0/start) with contactor, reset button in plastic housing, no automatic restart, manual start, for motor output 0.55 - 0.75 kW

VPE

1 pc.



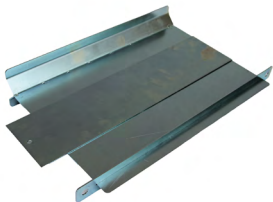
Control panel with runtime limitation, 1 sensor

Art.-Nr.: 820251

Motor protection switch (stop/0/start) with contactor, reset button in plastic housing, no automatic restart, manual start, for motor output 1.1 - 1.5 kW

VPE

1 pc.



Divider, for 2-fold partition, galvanised

Art.-Nr.: 0100280

complete, with 2 slides

VPE

1 pc.



Flange ring Ø 400 mm, Trevira silo

Art.-Nr.: 0107589

with edge protection, simple version

VPE

1 pc.



Flange ring Ø 250 mm, Trevira silo

Art.-Nr.: 0107502

with clamping ring

VPE

1 pc.



Flange ring Ø 350 mm, Trevira silo

Art.-Nr.: 0107501
with clamping ring

VPE

1 pc.



Flange ring Ø 400 mm, Trevira silo

Art.-Nr.: 0107504
with clamping ring

VPE

1 pc.



Flange ring Ø 450 mm, Trevira silo

Art.-Nr.: 0107506
with clamping ring

VPE

1 pc.



External vibrator 0.18 kW, 3000 rpm

Art.-Nr.: VIBRAT.T220
230/400V, 50/60Hz, vibration intensity 30 %

VPE

1 pc.

Retaining plate



Art.-Nr.: 601108
for external vibrator 0.18 kW

VPE

1 pc.

22 Individual Parts List



Auger Headbox

Name	System	Art.-Nr.:	Information	VPE
Auger headbox	Ø 55 - 90 mm	0210046	with outlet Ø 150 mm and flared edge	1 pc.
Auger headbox	Ø 125 mm	0112046	with outlet Ø 150 mm, without flange plate for gear motor attachment	1 pc.
Auger headbox	Ø 55 - 90 mm	0210054	with outlet Ø 107 mm, without flared edge	1 pc.
Auger headbox	Ø 125 mm	0112049	with outlet Ø 110 mm, without beaded edge and flange plate for gear motor attachment	1 pc.

Head Connections



Name	System	Art.-Nr.:	Information	VPE
Head connection	Ø 55 mm	0105560	for auger Ø 55 mm	1 pc.
Head connection	Ø 60 mm	0106560	for auger Ø 60 mm	1 pc.
Head connection	Ø 75 mm	0107560	for auger Ø 75 mm	1 pc.
Head connection	Ø 90 mm	0109560	for auger Ø 90 mm	1 pc.
Head connection	Ø 125 mm	0112560	for auger Ø 125 mm	1 pc.



Pipe Bracket Clamps

Name	System	Art.-Nr.:	Information	VPE
Pipe bracket clamp, 2-piece, galvanized	Ø 56 mm	801060	Ø 60 mm, for 56 mm pipe	1 pc.
Pipe bracket clamp, 2-piece, galvanized	Ø 60 mm	801070	Ø 70 mm, for 60 mm pipe	1 pc.
Pipe bracket clamp, 2-piece, galvanized	Ø 75 mm	801080	Ø 80 mm, for 75 mm pipe	1 pc.
Pipe bracket clamp, 2-piece, galvanized	Ø 90 mm	801095	Ø 95 mm, for 89 mm pipe	1 pc.
Pipe bracket clamp, 2-piece, galvanized	Ø 125 mm	01120321	Ø 130 mm, for 125 mm pipe	1 pc.
Pipe bracket clamp, 2-piece, galvanized	Ø 127 mm	801038	Ø 140 mm, for 127 mm pipe	1 pc.

Driveplugs



Name	System	Art.-Nr.:	Information	VPE
Driveplug	Ø 55 mm	0105568	without thrust pin, for auger Ø 55 mm	1 pc.
Driveplug	Ø 60 mm	0106568	without thrust pin, for auger Ø 60 mm	1 pc.
Driveplug	Ø 75 mm	0107568	without thrust pin, 20/35 mm, for auger Ø 75 mm	1 pc.
Driveplug	Ø 90 mm	0109568	without thrust pin, 20/45 mm, for auger Ø 90 mm	1 pc.
Driveplug	Ø 125 mm	0112568	without thrust pin, 20/70 mm, for auger Ø 125 mm	1 pc.



Sleeves

Name	System	Art.-Nr.:	Information	VPE
Sleeve	Ø 75 mm	0107558	without thrust pin, 24/35 mm, for auger Ø 75 mm	1 pc.
Sleeve	Ø 90 mm	0109558	without thrust pin, 24/45 mm, for auger Ø 90 mm	1 pc.
Sleeve	Ø 127 mm	0112558	without thrust pin, 24/70 mm, for auger Ø 125 mm	1 pc.



Hooks with Threat

Name	System	Art.-Nr.:	Information	VPE
Hook with threat, M8, galvanised, Mat. 8.8	Ø 55/60 mm	13921001	with self Nut, length 55 mm, for auger Ø 55 / 60 mm	
Hook with threat, M8, galvanised, Mat. 8.9	Ø 75 mm	13921002	with self Nut, length 64 mm, for auger Ø 75 mm	800 pc.
Hook with threat, M8, galvanised, Mat. 8.10	Ø 90 mm	13921003	with self Nut, length 74 mm, for auger Ø 90 mm	600 pc.
Hook with threat, M8, galvanised, Mat. 8.11	Ø 127 mm	13921004	with self Nut, length 102 mm, for auger Ø 125 mm	500 pc.

Individual Parts

Screw set for drive unit



Ø 55 - 127 mm
Art.-Nr.: 0100901

VPE

1 pc.

Gear motor NN101 M080A4, 0.55 kW, 370 rpm



Art.-Nr.: NN1010055370

380-480V-50/60Hz, B5, i = 3.78 (1400 rpm), shaft 20 x 40 mm with parallel key, flange 140 x 95 x 115 mm, terminal box right side

VPE

1 pc.

NEW

Gear motor GPX M080B4, 0.75 kW, 370 rpm

Art.-Nr.: GPX0010075370X2

380-480V-50/60Hz, B5, i = 3.79 (1410 rpm), shaft 24 x 135 mm with bore, flange 140 x 95 x 115 mm, terminal box right side

VPE

1 pc.



Gear motor GPX M090S4, 1.1 kW, 370 rpm

Art.-Nr.: GPX0010110370X2

380-480V-50/60Hz, B5, i = 3.79 (1420 rpm), shaft 24 x 135 mm with bore, flange 140 x 95 x 115 mm, terminal box right side

VPE

1 pc.

Gear motor GPX M090L4, 1.5 kW, 370 rpm

Art.-Nr.: GPX0010150370X2

380-480V-50/60Hz, B5, i = 3.79 (1420 rpm), shaft 24 x 135 mm with bore, flange 140 x 95 x 115 mm, terminal box right side

VPE

1 pc.



Flange plate

Ø 127 mm

Art.-Nr.: 0112563

for gear motor attachment to 125 head

VPE

1 pc.



GRP hopper

Ø 55 - 127 mm

Art.-Nr.: 13113007

for auger feed hopper Ø 560 mm, RAL 5010 (blue)

VPE

1 pc.



Half moon

Ø 55 - 127 mm

Art.-Nr.: 0100001

without bore, standard, for feed hopper

VPE

1 pc.



Slide valve guide

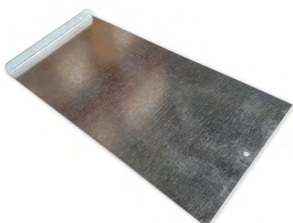
Ø 55 - 127 mm

Art.-Nr.: 0100002

for feed hopper

VPE

1 pc.



Slide valve

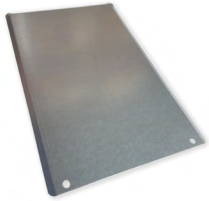
Ø 55 - 127 mm

Art.-Nr.: 0100003

for feed hopper

VPE

1 pc.



Rain cover

Ø 55 - 127 mm
 Art.-Nr.: 0100006
 for feed hopper slide valve

VPE

1 pc.



Screw set, hot-dip galvanised

Ø 55 - 127 mm
 Art.-Nr.: 0100900
 for feed hopper

VPE

1 pc.



Seal material

Ø 55 - 127 mm
 Art.-Nr.: 6044299
 212 / Ø 5 mm, piece = 4.5 m

VPE

1 pc.



Individual parts set

Ø 55 - 127 mm
 Art.-Nr.: 0100000
 consisting of crescent, slide valve guide, slide valve, putty cord, rain guard for slide valve, screw set, for feed hopper

VPE

1 pc.

23 Conveyor Auger WAS Witte Auger System

Conveyor Auger WAS Ø 75

Delivery rate:WVS Ø 75: approx. 1.30 t/h for horizontal delivery

Auger drive unit, sst, for WAS



Ø 75 mm
Art.-Nr.: 13122033

Housing riveted incl. limit switch and screw material, without drain funnel and pipe connection

VPE

1 pc.

Pipe connection set, sst, for WAS



Ø 75 mm
Art.-Nr.: 13111022

Pipe connection incl. V2A pipe socket, pipe bracket clamp and fixing bolts

VPE

1 pc.

Funnel, blue, for WAS



Ø 75 mm
Art.-Nr.: 13113066

Dimensions: 182 x 182 mm, square, on pipe Ø 75 mm

VPE

1 pc.

Funnel, transparent



Ø 75 mm
Art.-Nr.: 13113067

Dimensions: 182 x 182 mm, square, on pipe Ø 75 mm

VPE

1 pc.

Gear motor PU01 M080B4, 0.75 kW, 370 rpm



Ø 75 mm
Art.-Nr.: PU0010075370E7

Shaft 22 x 57 mm, RAL 5010, incl. retaining plate for ceiling mounting

VPE

1 pc.



Gear motor PU01 M090S4, 1.1 kW, 370 rpm

Ø 75 mm

Art.-Nr.: PU0010110370E7

Shaft 22 x 57 mm, RAL 5010, incl. retaining plate for ceiling mounting

VPE

1 pc.



Motor sleeve, complete

Ø 75 mm

Art.-Nr.: 13021012

incl. clamping plate, screws, inner Ø: 22 mm, outer Ø: 37 mm

VPE

1 pc.



PVC pipe

Ø 75 mm

Art.-Nr.: 01070301

Dimensions: 75 x 68.5 mm, lugged on one side, with clamping slot, length: 3 m

VPE

from 1 pc.

NEW



Click Pipe, repair pipe

Ø 75 mm

Art.-Nr.: 01070301-CP

straight, half cup, length: 1000 mm, for Ø 75 mm PVC pipe

VPE

1 pc.

NEW



Control pipe, 2-piece

Ø 75 mm

Art.-Nr.: 13122058-SET

Transparent plastic housing incl. screws

VPE

1 pc.



PVC pipe bend 45°

Ø 75 mm
Art.-Nr.: 01070351

Dimensions: 75 x 68.5 mm, lugged on one side, R1500, with clamping slot, length: 1280 mm

VPE

from 1 pc.

NEW



45° repair pipe bend, Click Pipe

Ø 75 mm
Art.-Nr.: 01070351-CP

complete, length: 1000 mm, for Ø 75 mm PVC pipe

VPE

1 pc.



Pipe bend 45°, galvanised

Ø 75 mm
Art.-Nr.: 01070355

Dimensions: 76.1 x 2.9 mm, R1500, length: 1250 mm

VPE

1 pc.



Flex auger 75 mm

Ø 75 mm
Art.-Nr.: 6040

Dimensions: 60 x 40 x 36 mm, 12 x 4 mm

VPE

from 1 m



Pipe bracket clamp, 2-piece, galvanised

Ø 75 mm
Art.-Nr.: 801080

Ø 80 mm, for Ø 75 mm pipe

VPE

1 pc.



Fixing clamp, sst

Ø 75 mm

Art.-Nr.: 17311014

70 - 90 mm, 12 mm wide, for pipe 75 x 68.5 mm

VPE

1 pc.



Tube coupler

Ø 75 mm

Art.-Nr.: 0107045

for pipe 75 x 68.5 mm, for connecting two smooth pipe ends

VPE

1 pc.



PVC double-coupler

Ø 75 mm

Art.-Nr.: 10223079

t = 3.5 mm, with slot, with central pipe stop inside, length: 180 mm, for connecting smooth PVC pipe ends

VPE

1 pc.



Silo hopper, PE plastic, black, for WAS

Ø 75 mm

Art.-Nr.: 13111008

Outer Ø = 440 mm

VPE

1 pc.



Double funnel, GRP, 15°, black, for WAS

Ø 75 mm

Art.-Nr.: 13111039

Outer Ø = 440 mm, height: 340 mm

VPE

1 pc.



Flange ring, galvanised, for WAS

Ø 75 mm
Art.-Nr.: 13111007

Outer diameter = 550 mm, inner diameter = 430 mm, for silo adapter, connection between WAS hopper and GRP silo

VPE

1 pc.



Connection, complete, PE plastic, black, for WAS

Ø 75 mm
Art.-Nr.: 13122032

from hopper to auger box incl. gate valve and screw material

VPE

1 pc.



Boot box for silo hopper, 75 mm, sst, for WAS

Ø 75 mm
Art.-Nr.: 13122020

with pipe clamp, expansion shaft and end bearing

VPE

1 pc.



Boot box for silo hopper, 75 mm, 2-fold, sst, for WAS

Ø 75 mm
Art.-Nr.: 13122045

with 2 pcs. pipe clamps and 2 pcs. expansion shafts with end bearing

VPE

1 pc.



Clamping shaft 75mm, for WAS

Ø 75 mm
Art.-Nr.: 13022011

Ø 75 mm, complete

VPE

1 pc.

Partition for boot box silo hopper, 2-fold, sst, for WAS


Ø 75 mm
Art.-Nr.: 13122035

Individual actuation consisting of: 1 x partition with round steel guide, for welding in, 2 x sliding plates, for feed hopper lower section 2-fold

VPE

 1 pc.

Auger outlet complete, blue, for WAS


Ø 75 mm
Art.-Nr.: 13211035

Drain housing, rotary slide valve, cover, pull handle set red/green

VPE

 1 pc.

Outlet, red


Ø 75 mm
Art.-Nr.: 0107060

with shut-off valve, for pipe Ø 75 mm, with Ø 60 mm drain (internal), without drain pipe

VPE

 1 pc.

Conveyor Auger WAS Ø 89

Delivery rate WVS Ø 89: approx. 2.50 t/h for horizontal delivery

Auger drive unit, sst, for WAS



Ø 89 mm
Art.-Nr.: 13122033

Housing riveted incl. limit switch and screw material, without drain funnel and pipe connection

VPE

1 pc.

Pipe connection set, sst, for WAS



Ø 89 mm
Art.-Nr.: 13111023

Pipe connection incl. V2A pipe socket, pipe bracket clamp and fixing bolts

VPE

1 pc.

Funnel, blue, for WAS



Ø 89 mm
Art.-Nr.: 13113066

Dimensions: 182 x 182 mm, square, on pipe Ø 75 mm

VPE

1 pc.

Funnel, transparent



Ø 89 mm
Art.-Nr.: 13113067

Dimensions: 182 x 182 mm, square, on pipe Ø 75 mm

VPE

1 pc.

Gear motor PU01 M080B4, 0.75 kW, 370 rpm



Ø 89 mm
Art.-Nr.: PU0010075370E7

Shaft 22 x 57 mm, RAL 5010, incl. retaining plate for ceiling mounting

VPE

1 pc.

Gear motor PU01 M090S4, 1.1 kW, 370 rpm


Ø 89 mm

Art.-Nr.: PU0010110370E7

Shaft 22 x 57 mm, RAL 5010, incl. retaining plate for ceiling mounting

VPE

1 pc.

Motor sleeve, complete


Ø 89 mm

Art.-Nr.: 13021013

incl. clamping plate, screws, inner Ø: 22 mm, outer Ø: 44 mm

VPE

1 pc.

PVC pipe


Ø 89 mm

Art.-Nr.: 01090301

Dimensions: 89 x 82 mm, lugged on one side, with clamping slot, length: 3 m

VPE

from 1 pc.

PVC pipe


Ø 89 mm

Art.-Nr.: 0109030

Dimensions: 90 x 81.4 mm, lugged on one side, without clamping slot, length: 3 m

VPE

from 1 pc.

NEW



Control pipe, 2-piece

Ø 89 mm

Art.-Nr.: 13122059-SET

Transparent plastic housing incl. screws

VPE

1 pc.



PVC pipe bend 45°

Ø 89 mm
Art.-Nr.: 01090351

Dimensions: 89 x 82 mm, lugged on one side, R1568, with clamping slot, length: 1320 mm

VPE

from 1 pc.



Pipe bend 45°, galvanised

Ø 89 mm
Art.-Nr.: 01090355

Dimensions: 88.9 x 3.2 mm, R1700, length: 1370 mm

VPE

1 pc.



Flex auger 90 mm

Ø 89 mm
Art.-Nr.: 6850

Dimensions: 68 x 50 x 44.5 mm, 11.7 x 4.3 mm

VPE

from 1 m



Pipe bracket clamp, 2-piece, galvanised

Ø 89 mm
Art.-Nr.: 801095

Ø 95 mm, for Ø 89 mm pipe

VPE

1 pc.



Fixing clamp, sst

Ø 89 mm
Art.-Nr.: 01090321

90 - 110 mm, 12 mm wide, for pipe 89 x 82 mm

VPE

1 pc.



Tube coupler

Ø 89 mm

Art.-Nr.: 0109045

for pipe 89 x 82 mm, for connecting two smooth pipe ends

VPE

1 pc.



PVC double-coupler

Ø 89 mm

Art.-Nr.: 10223080

t = 3.5 mm, with slot, with central pipe stop inside, length: 180 mm, for connecting smooth PVC pipe ends

VPE

1 pc.



Silo hopper, PE plastic, black, for WAS

Ø 89 mm

Art.-Nr.: 13111008

Outer Ø = 440 mm

VPE

1 pc.



Double funnel , GRP, 15°, black, for WAS

Ø 89 mm

Art.-Nr.: 13111039

Outer Ø = 440 mm, height: 340 mm

VPE

1 pc.



Flange ring, galvanised, for WAS

Ø 89 mm

Art.-Nr.: 13111007

Outer diameter = 550 mm, inner diameter = 430 mm, for silo adapter, connection between WAS hopper and GRP silo

VPE

1 pc.



Connection, complete, PE plastic, black, for WAS

Ø 89 mm

Art.-Nr.: 13122032

from hopper to auger box incl. gate valve and screw material

VPE

1 pc.



Boot box for silo hopper, 90 mm, sst, for WAS

Ø 89 mm

Art.-Nr.: 13122021

with pipe clamp, expansion shaft and end bearing

VPE

1 pc.



Boot box for silo hopper, 90 mm, 2-fold, sst, for WAS

Ø 89 mm

Art.-Nr.: 13122046

with 2 pcs. pipe clamps and 2 pcs. expansion shafts with end bearing

VPE

1 pc.



Clamping shaft 75mm, for WAS

Ø 89 mm

Art.-Nr.: 13022012

Ø 89 mm, complete

VPE

1 pc.



Partition for boot box silo hopper, 2-fold, sst, for WAS

Ø 89 mm

Art.-Nr.: 13122035

Individual actuation consisting of: 1 x partition with round steel guide, for welding in, 2x sliding plates, for feed hopper lower section 2-fold

VPE

1 pc.



Auger outlet complete, blue, for WAS

Ø 89 mm

Art.-Nr.: 13211036

Drain housing, rotary slide valve, cover, pull handle set red/green

VPE

1 pc.



Outlet, red

Ø 89 mm

Art.-Nr.: 0109060

with shut-off valve, for pipe Ø 90 mm, with Ø 63 mm drain (internal), without drain pipe

VPE

1 pc.

Conveyor Augers WAS Ø 127

Delivery rate WVS Ø 127: approx. 4.50 t/h for horizontal delivery



Auger drive unit, sst, for WAS

Ø 127 mm

Art.-Nr.: 13122057

incl. limit switch and screw material, without drain funnel and pipe connection

VPE

1 pc.



Pipe connection set, sst, for WAS

Ø 127 mm

Art.-Nr.: 13111038

Pipe connection incl. V2A pipe socket, pipe bracket clamp and fixing bolts

VPE

1 pc.



Funnel, sst, for WAS

Ø 127 mm
Art.-Nr.: 13111036

Dimensions: 185 x 185 mm, square, on pipe Ø 105 mm

VPE

1 pc.



Gear motor PU01 M090S4, 1.1 kW, 370 rpm

Ø 127 mm
Art.-Nr.: PU0010110370E7

Shaft 22 x 57 mm, RAL 5010, incl. retaining plate for ceiling mounting

VPE

1 pc.



Gear motor PU01 M090L4, 1.5 kW, 375 rpm

Ø 127 mm
Art.-Nr.: PU0010150370E7

Shaft 22 x 57 mm, RAL 5010, incl. retaining plate for ceiling mounting

VPE

1 pc.



Motor sleeve, complete

Ø 127 mm
Art.-Nr.: 13021014

incl. clamping plate, screws, inner Ø: 22 mm, outer Ø: 65 mm

VPE

1 pc.



PVC pipe

Ø 127 mm
Art.-Nr.: 01120301

Dimensions: 127 x 117 mm, lugged on one side, with clamping slot, length: 3 m

VPE

from 1 pc.



PVC pipe bend 45° short

Ø 127 mm
Art.-Nr.: 01120351

Dimensions: 127 x 117 mm, lugged on one side, R1700, with clamping slot, length: 1400 mm

VPE

from 1 pc.



PVC pipe bend 45°, galvanised

Ø 127 mm
Art.-Nr.: 01120355

Dimensions: 127 x 4.0 mm, R1800, length: 1400 mm

VPE

1 pc.



Flex auger 125 mm

Ø 127 mm
Art.-Nr.: 9565

Dimensions: 95 x 65 x 67 mm, 14 x 5 mm

VPE

from 1 m



Pipe bracket clamp, 2-piece, galvanised

Ø 127 mm
Art.-Nr.: 801038

Ø 140 mm, for pipe Ø 127 mm

VPE

1 pc.



Tube coupler

Ø 127 mm
Art.-Nr.: 0112045

incl. 2 pieces reinforcing plates, screws and nuts, for pipe 127 x 117 mm, for connecting two smooth pipe ends

VPE

1 pc.

PVC double-coupler

Ø 127 mm

Art.-Nr.: 10223081

t = 3.5 mm, with slot, length: 255 mm, for connecting smooth PVC pipe ends

VPE

1 pc.

Silo hopper, PE plastic, black, for WAS

Ø 127 mm

Art.-Nr.: 13111008

Outer Ø = 440 mm

VPE

1 pc.

Double funnel , GRP, 15°, black, for WAS

Ø 127 mm

Art.-Nr.: 13111039

Outer Ø = 440 mm, height: 340 mm

VPE

1 pc.

Flange ring, galvanised, for WAS

Ø 127 mm

Art.-Nr.: 13111007

Outer diameter = 550 mm, inner diameter = 430 mm, for silo adapter, connection between WAS hopper and GRP silo

VPE

1 pc.

Connection, complete, PE plastic, black, for WAS

Ø 127 mm

Art.-Nr.: 13122032

from hopper to feed hopper lower section incl. gate valve and screw material

VPE

1 pc.

Boot box for silo hopper, 127 mm, sst, for WAS**Ø 127 mm****Art.-Nr.: 13122060**

with pipe clamp, expansion shaft and end bearing

VPE

1 pc.

Clamping shaft 127 mm, for WAS**Ø 127 mm****Art.-Nr.: 13022040**

Ø 127 mm, complete

VPE

1 pc.

Outlet**Ø 127 mm****Art.-Nr.: 0112060**

with shut-off valve, for pipe Ø 125 mm, with Ø 80 mm drain (internal), without drain pipe

VPE

1 pc.

24 Screw Auger 100

Screw Auger 100

RS100 delivery rate: approx. 5 m³/H (horizontal) / approx. 4 m³/H (45°)



Auger Heads

Name	System	Art.-Nr.:	Information	VPE
Auger head for V-belt drive without motor (up to 3.0 m) - up to 3.0 m with 0.75 kW	RS100	0210007	Auger head housing with outlet Ø 150 mm, drive shaft, bearing seat and motor bracket, V-belt pulleys 250/71/1 (hole 19 mm), V-belt 9.5 x 950 mm, V-belt guard and screw material	1 pc.
Screw head for V-belt drive without motor (up to 7.0 m) - up to 5.0 m with 1.1 kW - up to 7.0 m with 1.5 kW	RS100	0210009	Auger head housing with outlet Ø 150 mm, drive shaft, bearing seat and motor bracket, V-belt pulleys 250/71/2 (hole 24 mm), V-belt 9.5 x 950 mm, V-belt guard and screw material	1 pc.
Screw head for V-belt drive without motor (up to 12.0 m) - up to 9.0 m with 2.2 kW - up to 12.0 m with 4.0 kW	RS100	0210008	Auger head housing with outlet Ø 150 mm, drive shaft, bearing seat and motor bracket, V-belt pulleys 250/71/3 (hole 28 mm), V-belt 9.5 x 950 mm, V-belt guard and screw material	1 pc.
Auger head for V-belt drive without motor (up to 14.0 m) - up to 14.0 m with 5.5 kW	RS100	0210006	Auger head housing with outlet Ø 150 mm, drive shaft, bearing seat and motor bracket, V-belt pulleys 250/71/3 (hole 38 mm), V-belt 9.5 x 1077 mm, V-belt guard and screw material	1 pc.



Drive Head, Chain Coupling

Name	System	Art.-Nr.:	Information	VPE
Auger head with chain coupling without motor (up to 7.0 m) - up to 3.0 m with 0.75 kW - up to 4.0 m with 1.1 kW - up to 7.0 m with 1.5 kW	RS100	02100081	Auger head housing with outlet Ø 150 mm, chain coupling for geared motor shaft 20 x 40 mm, connecting bolts and screw material	1 pc.
Auger head with chain coupling without motor (up to 12.0 m) - up to 9.0 m with 2.2 kW - up to 12.0 m with 3.0 kW	RS100	02100082	Auger head housing with outlet Ø 150 mm, chain coupling for geared motor shaft 25 x 50 mm, connecting bolts and screw material	1 pc.



V-Belt Electric Motors

Name	System	Art.-Nr.:	Information	VPE
Electric motor M080B4, 0.75 kW, 1410 rpm	RS100	M080B4B3	230/400V-50Hz, 460V-60Hz, shaft 19 x 40 mm, RAL 5010, foot mounted	1 pc.
Electric motor M090S4, 1.1 kW, 1420 rpm	RS100	M090S4B3	230/400V-50Hz, 460V-60Hz, shaft 24 x 50 mm, RAL 5010, foot mounted	1 pc.
Electric motor M090L4, 1.5 kW, 1420 rpm	RS100	M090L4B3	230/400V-50Hz, 460V-60Hz, shaft 24 x 50 mm, RAL 5010, foot mounted	1 pc.
Electric motor M100LA4, 2.2 kW, 1440 rpm	RS100	M100LA4B3	230/400V-50Hz, 460V-60Hz, shaft 28 x 60 mm, RAL 5010, foot mounted	1 pc.
Electric motor M100LB4, 3.0 kW, 1440 rpm	RS100	M100LB4B3	230/400V-50Hz, 460V-60Hz, shaft 28 x 60 mm, RAL 5010, foot mounted	1 pc.
Electric motor M112M4, 4.0 kW, 1440 rpm	RS100	M112M4B3	400/690V-50Hz, 460V-60Hz, shaft 28 x 60 mm, RAL 5010, foot mounted	1 pc.

Gear Motors, Chain Coupling

Gear motor NN101 M080B4, 0.75 kW, 370 rpm



RS100

Art.-Nr.: NN1010075370

230/400V-50Hz, 460V-60Hz, B5, i = 3,78 (1410 rpm), shaft 20 x 40 mm with parallel key, flange 140 mm, RAL 5010

VPE

1 pc.

Gear motor NN101 M090S4, 1.1 kW, 370 rpm



RS100

Art.-Nr.: NN1010110370

230/400V-50Hz, 460V-60Hz, B5, i = 3,78 (1420 rpm), shaft 20 x 40 mm with parallel key, flange 140 mm, RAL 5010

VPE

1 pc.

Gear motor NN101 M090L4, 1.5 kW, 370 rpm



RS100

Art.-Nr.: NN1010150370

230/400V-50Hz, 460V-60Hz, B5, i = 3,78 (1400 rpm), shaft 20 x 40 mm with parallel key, flange 140 mm, RAL 5010

VPE

1 pc.

Gear motor NN172 M100LA4, 2.2 kW, 352 rpm



RS100

Art.-Nr.: NV1720220343

230/400V-50Hz, 460V-60Hz, B5, i = 4,09 (1440 rpm), shaft 25 x 50 mm with parallel key, flange 140 mm, RAL 5010

VPE

1 pc.

Gear motor NN172 M100LB4, 3.0 kW, 352 rpm



RS100

Art.-Nr.: NV1720300343

230/400V-50Hz, 460V-60Hz, B14, i = 4,09 (1440 rpm), shaft 25 x 50 mm with parallel key, flange 140 mm, RAL 5010

VPE

1 pc.

Rain Covers



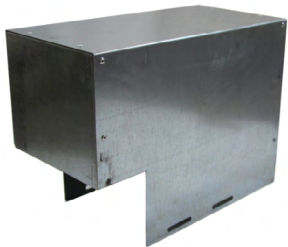
Rain cover

RS100
Art.-Nr.: 0210036

0.75 - 1.5 kW for V-belt drive, for size: 80/90

VPE

1 pc.



Rain cover

RS100
Art.-Nr.: 0215033

0.75 - 5.5 kW for V-belt drive, for size: 80/90/100/112/132

VPE

1 pc.



Rain cover

RS100
Art.-Nr.: 0109036

0.75 - 2.2 kW for gear motor chain coupling, for size: 80/90/100

VPE

1 pc.



Auger Extension

Name	System	Art.-Nr.:	Information	VPE
Auger extension 0.5 m, cpl.	RS100	0210010	Screw auger with both ends. Flange, auger winding with connecting pin and screw material	1 pc.
Auger extension 1.0 m, cpl.	RS100	0210011	Screw auger with both ends. Flange, auger winding with connecting pin and screw material	1 pc.
Auger extension 2.0 m, cpl.	RS100	0210012	Screw auger with both ends. Flange, auger winding with connecting pin and screw material	1 pc.
Auger extension 3.0 m, cpl.	RS100	0210013	Screw auger with both ends. Flange, auger winding with connecting pin and screw material	1 pc.

Mountings & Equipment



Auger boot box, 0-45°, adjustable

RS100
Art.-Nr.: 0210020

GRP hopper, blue, half-moon, slide valve guide, rain guard, slide, lower section of auger box with blind cover, screw set and sealing putty

VPE

1 pc.

Mounting thread, 0.5 m



RS100
Art.-Nr.: 0210040

with 50 mm pitch, suitable for auger box

VPE

1 pc.

Tube Coupler, galvanised



RS100
Art.-Nr.: 0210045

one-piece, incl. screw material, 300 mm long

VPE

1 pc.

End bearing



RS100
Art.-Nr.: 0210310

incl. end bearing journal

VPE

1 pc.

Mounting foot cpl.



RS100
Art.-Nr.: 0210220

with infeed cage, auger winding, end bearing with journal and screw material, 1.0 mm long

VPE

1 pc.

Inlet regulation

RS100
Art.-Nr.: 0210221

for regulating the delivery rate, suitable for mounting foot 0210220

VPE

1 pc.

Inlet Ø 150 mm, complete

RS100
Art.-Nr.: 0210243

Auger head housing, continuous auger winding, end bearing with journal and screw material, for top drive

VPE

1 pc.

Hopper with attachment

RS100
Art.-Nr.: 0210220

Dimensions: 500 x 500 x 1100 mm, with auger box lower section (30°) incl. slide valve, slide valve guide, cover, fitted

VPE

1 pc.

Intermediate bearing, complete

RS100
Art.-Nr.: 0210330

Intermediate bearing housing with connecting journal and screw material

VPE

1 pc.

Intermediate outlet/inlet

RS100
Art.-Nr.: 0210352

incl. connecting clamps and screw material

VPE

1 pc.

Mobile Screw Auger Conveyor 100

FRS100 delivery rate: approx. 4 m³/h (45°)

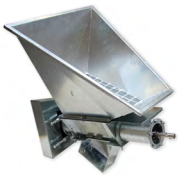
Feed hopper for 1.1 kW - 1.5 kW / 45° with bottom drive (without motor)

Art.-Nr.: 0210258-15

500 mm, consisting of: V-belt drive 250/71/2/SPZ (bore 24 mm), incl. V-belt guard and motor bracket, lower section for auger box incl. mounting thread and drive shaft, hopper with grill, galvanised (without cover), slide valve incl. guide for hopper, foot frame for anchoring

VPE

1 pc.



Feed hopper for 2.2 kW - 4.0 kW / 45° with bottom drive (without motor)

Art.-Nr.: 0210258-13

500 mm, consisting of: V-belt drive 250/71/3/SPZ (bore 28 mm), incl. V-belt guard and motor bracket, lower section for auger box incl. mounting thread and drive shaft, hopper with grill, galvanised (without cover), slide valve incl. guide for hopper, foot frame for anchoring

VPE

1 pc.

Outlet Ø 150 mm, cpl.

RS100

Art.-Nr.: 0210240

Auger head housing, short auger winding and end bearing, for bottom drive

VPE

1 pc.



Cover for feed hopper

RS100

Art.-Nr.: 0210258-2

with handle, galvanised

VPE

1 pc.



Chassis for RS100

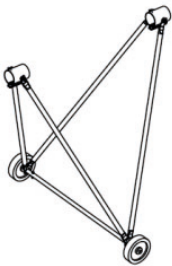
RS100

Art.-Nr.: 0210805

with rollers incl. connecting clamp, auger length max. 8 m

VPE

1 pc.



Axis, galvanised

RS100

Art.-Nr.: 0210258-4

with steering rollers for assembly under feed hopper

VPE

1 pc.



Electric Motors, V-Belt Drive



Name	System	Art.-Nr.:	Information	VPE
Electric motor M090S4, 1.1 kW, 1420 rpm	RS100	M090S4B3	230/400V-50Hz, 460V-60Hz, shaft 24 x 50 mm, RAL 5010, foot mounted	1 pc.
Electric motor M090L4, 1.5 kW, 1420 rpm	RS100	M090L4B3	230/400V-50Hz, 460V-60Hz, shaft 24 x 50 mm, RAL 5010, foot mounted	1 pc.
Electric motor M100LA4, 2.2 kW, 1440 rpm	RS100	M100LA4B3	230/400V-50Hz, 460V-60Hz, shaft 28 x 60 mm, RAL 5010, foot mounted	1 pc.
Electric motor M100LB4, 3.0 kW, 1440 rpm	RS100	M100LB4B3	230/400V-50Hz, 460V-60Hz, shaft 28 x 60 mm, RAL 5010, foot mounted	1 pc.
Electric motor M112M4, 4.0 kW, 1440 rpm	RS100	M112M4B3	400/690V-50Hz, 460V-60Hz, shaft 28 x 60 mm, RAL 5010, foot mounted	1 pc.



Auger Extension

Name	System	Art.-Nr.:	Information	VPE
Auger extension 0.5 m, cpl.	RS100	0210010	Screw auger with both ends. Flange, auger winding with connecting pin and screw material	1 pc.
Auger extension 1.0 m, cpl.	RS100	0210011	Screw auger with both ends. Flange, auger winding with connecting pin and screw material	1 pc.
Auger extension 2.0 m, cpl.	RS100	0210012	Screw auger with both ends. Flange, auger winding with connecting pin and screw material	1 pc.
Auger extension 3.0 m, cpl.	RS100	0210013	Screw auger with both ends. Flange, auger winding with connecting pin and screw material	1 pc.

25 Screw Auger 150

Screw Auger 150

Förderleistung RS150: ca. 17 m³/h (waagrecht) / ca. 10,5 m³/h (45°)



V-Belt Drive Head

Name	System	Art.-Nr.:	Information	VPE
Auger head with V-belt drive without motor (up to 6.0 m) - up to 3.0 m with 1.1 kW - up to 6.0 m with 1.5 kW	RS150	9525029	Auger head housing with outlet Ø 150 mm, drive shaft, bearing seat and motor bracket, V-belt pulleys 250/71/2 (hole 24 mm), V-belt 9.5 x 1024 mm, V-belt guard and screw material	1 pc.
Auger head with V-belt drive without motor (up to 12.0 m) - up to 8.0 m with 2.2 kW - up to 10.0 m with 3.0 kW - up to 12.0 m with 4.0 kW	RS150	9525030	Auger head housing with outlet Ø 150 mm, drive shaft, bearing seat and motor bracket, V-belt pulleys 250/71/3 (hole 28 mm), V-belt 9.5 x 1024 mm, V-belt guard and screw material	1 pc.
Auger head with V-belt drive without motor (up to 14.0 m) - up to 14.0 m with 5.5 kW	RS150	9525032	Auger head housing with outlet Ø 150 mm, drive shaft, bearing seat and motor bracket, V-belt pulleys 250/71/3 (hole 38 mm), V-belt 9.5 x 1077 mm, V-belt guard and screw material	1 pc.

Drive Head, Chain Coupling



Name	System	Art.-Nr.:	Information	VPE
Auger head with chain coupling, without motor (up to 6.0 m) - up to 3.0 m with 1.1 kW - up to 6.0 m with 1.5 kW	RS150	95250321	Auger head housing with outlet Ø 150 mm, chain coupling for geared motor shaft 20 x 40 mm, flange plate for geared motor assembly as well as connecting bolts and screw material	1 pc.
Auger head with chain coupling, without motor (up to 12.0 m) - up to 8.0 m with 2.2 kW - up to 10.0 m with 3.0 kW - up to 12.0 m with 4.0 kW	RS150	95250322	Auger head housing with outlet Ø 150 mm, chain coupling for geared motor shaft 25 x 50 mm, flange plate for geared motor assembly as well as connecting bolts and screw material	1 pc.



Drive Head, Coupling & Bracket

Name	System	Art.-Nr.:	Information	VPE
Auger head with coupling and bracket, without motor (up to 14.0 m) - up to 3.0 m with 1.1 kW - up to 6.0 m with 1.5 kW - up to 8.0 m with 2.2 kW - up to 10.0 m with 3.0 kW - up to 12.0 m with 4.0 kW - up to 14.0 m with 5.5 kW	RS150	0215001	Auger head housing with outlet Ø 150 mm, drive shaft, motor bracket and coupling for gear motor as well as screw material	1 pc.



V-Belt Electric Motors

Name	System	Art.-Nr.:	Information	VPE
Electric motor M090S4, 1.1 kW, 1420 rpm	RS150	M090S4B3	230/400V-50Hz, 460V-60Hz, shaft 24 x 50 mm, RAL 5010, foot mounted	1 pc.
Electric motor M090L4, 1.5 kW, 1420 rpm	RS150	M090L4B3	230/400V-50Hz, 460V-60Hz, shaft 24 x 50 mm, RAL 5010, foot mounted	1 pc.
Electric motor M100LA4, 2.2 kW, 1440 rpm	RS150	M100LA4B3	230/400V-50Hz, 460V-60Hz, shaft 28 x 60 mm, RAL 5010, foot mounted	1 pc.
Electric motor M100LB4, 3.0 kW, 1440 rpm	RS150	M100LB4B3	230/400V-50Hz, 460V-60Hz, shaft 28 x 60 mm, RAL 5010, foot mounted	1 pc.
Electric motor M112M4, 4.0 kW, 1440 rpm	RS150	M112M4B3	400/690V-50Hz, 460V-60Hz, shaft 28 x 60 mm, RAL 5010, foot mounted	1 pc.
Electric motor M132S4, 5.5 kW, 1450 rpm	RS150	M132S4B3	400/690V-50Hz, 460V-60Hz, shaft 38 x 80 mm, RAL 5010, foot mounted	1 pc.

Gear Motors, Chain Coupling



Note: Gear motors for coupling and bracket on request.

Gear motor NN101 M090S4, 1.1 kW, 370 rpm



RS150

Art.-Nr.: NN1010110370

230/400V-50Hz, 460V-60Hz, B5, i = 3,78 (1420 rpm), shaft 20 x 40 mm with parallel key, flange 140 mm, RAL 5010

VPE

1 pc.

Gear motor NN101 M090L4, 1.5 kW, 370 rpm



RS150

Art.-Nr.: NN1010150370

230/400V-50Hz, 460V-60Hz, B5, i = 3,78 (1420 rpm), shaft 20 x 40 mm with parallel key, flange 140 mm, RAL 5010

VPE

1 pc.

Gear motor NN172 M100LA4, 2.2 kW, 352 rpm



RS150

Art.-Nr.: NV1720220343

230/400V-50Hz, 460V-60Hz, B5, i = 4,09 (1440 rpm), shaft 25 x 50 mm with parallel key, flange 140 mm, RAL 5010

VPE

1 pc.

Gear motor NN172 M100LB4, 3.0 kW, 352 rpm



RS150

Art.-Nr.: NV1720300343

230/400V-50Hz, 460V-60Hz, B14, i = 4,09 (1440 rpm), shaft 25 x 50 mm with parallel key, flange 140 mm, RAL 5010

VPE

1 pc.

Gear motor NN172 M112M4B14, 4.0 kW, 357 rpm



RS150

Art.-Nr.: NV1720400357

400/690V-50Hz, 460V-60Hz, B14, i = 4,09 (1440 rpm), shaft 25 x 50 mm with parallel key, flange 140 mm, RAL 5010

VPE

1 pc.

Rain Covers



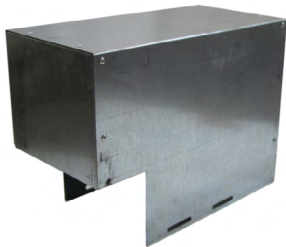
Rain cover

RS150
Art.-Nr.: 0210036

0.75 - 1.5 kW for V-belt drive, for size: 80/90

VPE

1 pc.



Rain cover

RS150
Art.-Nr.: 0215033

0.75 - 5.5 kW for V-belt drive, for size: 80/90/100/112/132

VPE

1 pc.



Rain cover

RS150
Art.-Nr.: 0215036

0.75 - 4.0 kW for gear motor chain coupling, for size: 80/90/100

VPE

1 pc.



Auger Extension

Name	System	Art.-Nr.:	Information	VPE
Auger extension 0.5 m, cpl.	RS150	0215010	Tubular auger with both ends. Flange, auger winding with connecting pin and screw material	1 pc.
Auger extension 1.0 m, cpl.	RS150	0215011	Tubular auger with both ends. Flange, auger winding with connecting pin and screw material	1 pc.
Auger extension 2.0 m, cpl.	RS150	0215012	Tubular auger with both ends. Flange, auger winding with connecting pin and screw material	1 pc.
Auger extension 3.0 m, cpl.	RS150	0215013	Tubular auger with both ends. Flange, auger winding with connecting pin and screw material	1 pc.
Auger extension 5.0 m, cpl.	RS150	0215015	Tubular auger with both ends. Flange, auger winding with connecting pin and screw material	1 pc.

Mountings & Equipment



Auger boot box, 0-45°, adjustable

RS150
Art.-Nr.: 0215020

GRP hopper, blue, half-moon, slide valve guide, rain guard, slide, lower section of auger box with blind cover, screw set and sealing putty

VPE

1 pc.



Mounting thread, 0.5 m

RS150
Art.-Nr.: 0215040

with 80 mm pitch, suitable for auger box

VPE

1 pc.



Tube Coupler, galvanised

RS150
Art.-Nr.: 0215045

one-piece, incl. screw material, 300 mm long

VPE

1 pc.



End bearing

RS150
Art.-Nr.: 0215310

incl. end bearing journal

VPE

1 pc.



Mounting foot, complete

RS150
Art.-Nr.: 0220220

with infeed cage, auger winding, end bearing with journal and screw material, 1.0 m long

VPE

1 pc.

Inlet regulation**RS150****Art.-Nr.: 0220221**

for regulating the delivery rate, suitable for mounting foot 0220220

VPE

1 pc.

Inlet Ø 150 mm, complete**RS150****Art.-Nr.: 0215243**

Auger head housing, continuous auger winding, end bearing with journal and screw material, for top drive

VPE

1 pc.

Hopper with attachment**RS150****Art.-Nr.: 02152220**

Dimensions: 500 x 500 x 1100 mm, with auger box lower section (30°) incl. slide valve, slide valve guide, cover, fitted

VPE

1 pc.

Intermediate bearing, complete**RS150****Art.-Nr.: 0215660**

Intermediate bearing housing with connecting journal and screw material

VPE

1 pc.

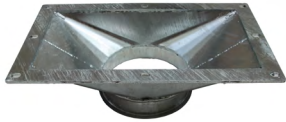
Intermediate outlet/inlet**RS150****Art.-Nr.: 0215352**

incl. connecting clamps and screw material

VPE

1 pc.

Transition RS150



RS150
Art.-Nr.: 15021025
 Transition, galvanised

VPE

 1 pc.



Intermediate Pieces

Name	System	Art.-Nr.:	Information	VPE
Intermediate piece 15°	RS150	0100008	Intermediate piece 15°, additional for feed hopper, for auger box bottom section	1 pc.
Intermediate piece 7.5°, for auger box lower section	RS150	0100008-1	Intermediate piece 7.5°, for auger box lower section	1 pc.
Intermediate piece 10°	RS150	0100008-2	Intermediate piece 10°, for auger box lower section	1 pc.
Intermediate piece 20°	RS150	0100008-3	Intermediate piece 20°, for auger box lower section	1 pc.
Intermediate piece 25° for lower section	RS150	0100008-4	Intermediate piece 25°, for auger box lower section	1 pc.

Mobile Screw Auger Conveyor 150

FRS100 delivery rate: approx. 10.5 m³/h (45°)

Feed hopper for 2.2 kW - 4.0 kW / 45° with bottom drive (without motor)

Art.-Nr.: 0215258-12

500 mm, consisting of: V-belt drive 250/71/3/SPZ (bore 28 mm), incl. V-belt guard and motor bracket, lower section for auger box incl. mounting thread and drive shaft, hopper with grill, galvanised (without cover), slide valve incl. guide for hopper, foot frame for anchoring

VPE

1 pc.



Feed hopper for 5.5 kW / 45° with bottom drive (without motor)

Art.-Nr.: 0215258-11

500 mm, consisting of: V-belt drive 250/71/3/SPZ (bore 38 mm), incl. V-belt guard and motor bracket, lower section for auger box incl. mounting thread and drive shaft, hopper with grill, galvanised (without cover), slide valve incl. guide for hopper, foot frame for anchoring

VPE

1 pc.

Outlet Ø 150 mm, cpl.

RS150

Art.-Nr.: 0215240

Auger head housing, short auger winding and end bearing, for bottom drive

VPE

1 pc.



Cover for feed hopper

RS150

Art.-Nr.: 0210258-2

with handle, galvanised

VPE

1 pc.



Chassis for RS150

RS150

Art.-Nr.: 0215805

with rollers incl. connecting clamp, auger length max. 7 m

VPE

1 pc.



Axis, galvanised

RS150

Art.-Nr.: 0210258-4

with steering rollers for assembly under feed hopper

VPE

1 pc.



Electric Motors, V-Belt Drive



Name	System	Art.-Nr.:	Information	VPE
Electric motor M090S4, 1.1 kW, 1420 rpm	RS150	M090S4B3	230/400V-50Hz, 460V-60Hz, shaft 24 x 50 mm, RAL 5010, foot mounted	1 pc.
Electric motor M090L4, 1.5 kW, 1420 rpm	RS150	M090L4B3	230/400V-50Hz, 460V-60Hz, shaft 24 x 50 mm, RAL 5010, foot mounted	1 pc.
Electric motor M100LA4, 2.2 kW, 1440 rpm	RS150	M100LA4B3	230/400V-50Hz, 460V-60Hz, shaft 28 x 60 mm, RAL 5010, foot mounted	1 pc.
Electric motor M100LB4, 3.0 kW, 1440 rpm	RS150	M100LB4B3	230/400V-50Hz, 460V-60Hz, shaft 28 x 60 mm, RAL 5010, foot mounted	1 pc.
Electric motor M112M4, 4.0 kW, 1440 rpm	RS150	M112M4B3	400/690V-50Hz, 460V-60Hz, shaft 28 x 60 mm, RAL 5010, foot mounted	1 pc.
Electric motor M132S4, 5.5 kW, 1450 rpm	RS150	M132S4B3	400/690V-50Hz, 460V-60Hz, shaft 38 x 80 mm, RAL 5010, foot mounted	1 pc.



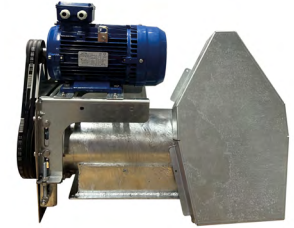
Auger Extension

Name	System	Art.-Nr.:	Information	VPE
Auger extension 0.5 m, cpl.	RS150	0215010	Tubular auger with both ends. Flange, auger winding with connecting pin and screw material	1 pc.
Auger extension 1.0 m, cpl.	RS150	0215011	Tubular auger with both ends. Flange, auger winding with connecting pin and screw material	1 pc.
Auger extension 2.0 m, cpl.	RS150	0215012	Tubular auger with both ends. Flange, auger winding with connecting pin and screw material	1 pc.
Auger extension 3.0 m, cpl.	RS150	0215013	Tubular auger with both ends. Flange, auger winding with connecting pin and screw material	1 pc.

26 Screw Auger 200

Screw Auger 200 NEW

RS200 delivery rate: approx. 80 m³/h (horizontal) / approx. 51 m³/H (45°)



V-Belt Drive Head

Name	System	Art.-Nr.:	Information	VPE
Drive housing for V-belt drive (up to 10.0 m) - up to 8.0 m with 3.0 kW - up to 10.0 m with 4.0 kW	RS200	15023001	Drive housing, galv., cpl., for V-belt drive	1 pc.



Drive Head Coupling

Name	System	Art.-Nr.:	Information	VPE
Drive housing with coupling and bracket, without motor (up to 10.0 m) - up to 3.0 m with 1.5 kW - up to 6.0 m with 2.2 kW - up to 8.0 m with 3.0 kW - up to 10.0 m with 4.0 kW	RS200	15023000	Drive housing, galv., cpl., incl. coupling for gear motor	1 pc.

Equipment

Outlet pipe RS 200 galvanised incl. connection box



RS200 Art.-Nr.: 15021015 Outlet pipe RS 200 galvanised incl. connection box	VPE
	1 pc.

Auger winding for outlet



RS200 Art.-Nr.: 15021020 Auger winding for 1.0 metre outlet	VPE
	1 pc.

Transition RS200



RS200 Art.-Nr.: 15021025 Transition, galvanised	VPE
	1 pc.



V-Belt Electric Motors

Name	System	Art.-Nr.:	Information	VPE
Electric motor M112M6, 2.2 kW, 945 rpm	RS200	M112M6B3	230/400V-50Hz, 460V-60Hz, shaft 28 x 60 mm, RAL 5010, foot mounted	1 pc.
Electric motor M132S6, 3.0 kW, 960 rpm	RS200	M132S6B3PTC	230/400V-50Hz, 460V-60Hz, shaft 38 x 80 mm, RAL 5010, foot mounted	1 pc.
Electric motor M132MK6, 4.0 kW, 960 rpm	RS200	M132MK6B3PTC	400/690V-50Hz, 460V-60Hz, shaft 38 x 80 mm, RAL 5010, foot mounted	1 pc.
Electric motor M132M6, 5.5 kW, 960 rpm	RS200	M132M6B3PTC	400/690V-50Hz, 460V-60Hz, shaft 38 x 80 mm, RAL 5010, foot mounted	1 pc.



Gear Motors, Chain Coupling

Name	System	Art.-Nr.:	Information	VPE
Gear motor MN202 M100LA4, 2.2 kW, 320 rpm	RS200	MV2020220311	230/400V-50Hz, 460V-60Hz, i = 4.5 (1440 rpm), shaft 30 x 60 mm, with parallel key, RAL 5010	1 pc.
Gear motor MN202 M100LB4, 3.0 kW, 320 rpm	RS200	MV2020300311	230/400V-50Hz, 460V-60Hz, B14, i = 4,09 (1440 rpm), shaft 30 x 60 mm with parallel key, RAL 5010	1 pc.
Gear motor MN202 M112M4, 4.5 kW, 320 rpm	RS200	MV2020400311	400/690V-50Hz, 460V-60Hz, i = 4.5 (1440 rpm), shaft 30 x 60 mm, with parallel key, RAL 5010	1 pc.
Gear motor MN272 M112MX4, 5.5 kW, 320 rpm	RS200	MV2720550320	400/690V-50Hz, 460V-60Hz, i = 4.53 (1440 rpm), shaft 35 x 70 mm, with parallel key, RAL 5010	1 pc.

Rain Covers



Rain cover

RS200
Art.-Nr.: 15021026

Rain guard cover motor for RS200 for gear motor chain coupling and V-belt

VPE

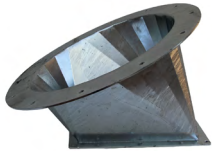
1 pc.

Auger Extension



Name	System	Art.-Nr.:	Information	VPE
Auger extension 0.5 m, cpl.	RS200	0220010	Tubular auger with both ends. Flange, auger winding with connecting pin and screw material	1 pc.
Auger extension 1.0 m, cpl.	RS200	0220011	Tubular auger with both ends. Flange, auger winding with connecting pin and screw material	1 pc.
Auger extension 2.0 m, cpl.	RS200	0220012	Tubular auger with both ends. Flange, auger winding with connecting pin and screw material	1 pc.

Mountings & Equipment



Funnel/transition from silo 25°

RS200

Art.-Nr.: 9602633

Hopper Ø 565 / 430 mm, galvanised, 25° for outdoor/indoor silo

VPE

1 pc.



End bearing

RS200

Art.-Nr.: 15023002

incl. end bearing journal

VPE

1 pc.



Inlet pipe RS 200 galvanised incl. connection box

RS200

Art.-Nr.: 15021015

Inlet pipe RS 200 galvanised incl. connection box

VPE

1 pc.



Auger winding inlet

RS200

Art.-Nr.: 15021021

Auger winding inlet

Surcharge for mounting thread

VPE

1 pc.



Intermediate bearing, complete

RS200

Art.-Nr.: 15021022

Intermediate bearing housing with connecting journal and screw material

VPE

1 pc.



Intermediate outlet

RS200
Art.-Nr.: 15021023
 Intermediate outlet

VPE

 1 pc.

Intermediate Pieces



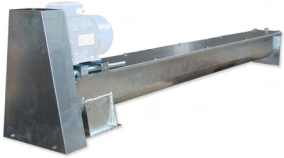
Name	System	Art.-Nr.:	Information	VPE
Intermediate piece 15°	RS200	0100008	Intermediate piece 15°, additional for feed hopper, for auger box bottom section	1 pc.
Intermediate piece 7.5°, for auger box lower section	RS200	0100008-1	Intermediate piece 7.5°, for auger box lower section	1 pc.
Intermediate piece 10°	RS200	0100008-2	Intermediate piece 10°, for auger box lower section	1 pc.
Intermediate piece 20°	RS200	0100008-3	Intermediate piece 20°, for auger box lower section	1 pc.
Intermediate piece 25° for lower section	RS200	0100008-4	Intermediate piece 25°, for auger box lower section	1 pc.

27 Trough Screw Auger 150

Trough Screw Auger 150

Delivery rate TS150: approx. 30 m³/h at 390 rpm

Trough Screw Auger Conveyor Drives



Drive TS150, galvanised,
for V-belt drive

TS150
Art.-Nr.: 0315307

Outfeed 150 x 150 mm, incl. motor bracket, V-belt pulleys 250/71/3 (hole 38 mm),
V-belt SPZ 9.5 x 1120 mm, V-belt guard, without electric motor, 2.05 m long

VPE

1 pc.



Drive TS150, galvanised,
for gear motor

TS150
Art.-Nr.: 0315303

Outlet 150 x 150 mm, with coupling and bracket for gear MN202, bore 30 mm,
2.05 m long

VPE

1 pc.



Electric Motors, V-Belt Drive

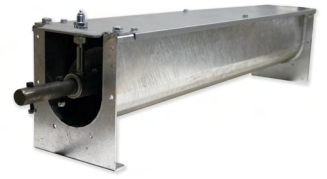
Name	System	Art.-Nr.:	Information	VPE
Electric motor M090S4, 1.1 kW, 1420 rpm - Conveying length up to 5.0 m	TS150	M090S4B3	230/400V-50Hz, 460V-60Hz, shaft 24 x 50 mm, RAL 5010, foot mounted	1 pc.
Electric motor M090L4, 1.5 kW, 1420 rpm - Conveying length up to 9.0 m	TS150	M090L4B3	230/400V-50Hz, 460V-60Hz, shaft 24 x 50 mm, RAL 5010, foot mounted	1 pc.
Electric motor M100LA4, 2.2 kW, 1440 rpm - Conveying length up to 15.0 m	TS150	M100LA4B3	230/400V-50Hz, 460V-60Hz, shaft 28 x 60 mm, RAL 5010, foot mounted	1 pc.
Electric motor M100LB4, 3.0 kW, 1440 rpm - Conveying length up to 20.0 m	TS150	M100LB4B3	230/400V-50Hz, 460V-60Hz, shaft 28 x 60 mm, RAL 5010, foot mounted	1 pc.

Gear Motors



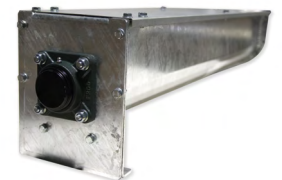
Name	System	Art.-Nr.:	Information	VPE
Gear motor MN202 M090S4B5, 1.1 kW, 276 rpm - Conveying length up to 5.0 m	TS150	MV2020110276	230/400V-50Hz, 460V-60Hz, i = 5.08 (1420 rpm), shaft 30 x 60 mm, terminal box top, RAL 5010	1 pc.
Gear motor MN202 M090L4B5, 1.5 kW, 405 rpm - Conveying length up to 9.0 m	TS150	MV2020150400	230/400V-50Hz, 460V-60Hz, i = 3.5 (1420 rpm), shaft 30 x 60 mm, terminal box top, RAL 5010	1 pc.
Gear motor MN202 M100LA4B14, 2.2 kW, 411 rpm - Conveying length up to 15.0 m	TS150	MV2020220400	230/400V-50Hz, 460V-60Hz, i = 3.5 (1440 rpm), shaft 30 x 60 mm, terminal box top, RAL 5010	1 pc.
Gear motor MN202 M100LB4B14, 3.0 kW, 411 rpm - Conveying length up to 20.0 m	TS150	MV2020300400	230/400V-50Hz, 460V-60Hz, i = 3.5 (1440 rpm), shaft 30 x 60 mm, terminal box top, RAL 5010	1 pc.

Extension With Intermediate Storage



Name	System	Art.-Nr.:	Information	VPE
Extension, galvanised	TS150	0315005	with intermediate storage and cover, 0.50 m long	1 pc.
Extension, galvanised	TS150	0315010	with intermediate storage and cover, 1.05 m long	1 pc.
Extension, galvanised	TS150	0315020	with intermediate storage and cover, 2.05 m long	1 pc.

Extension With End Storage



Name	System	Art.-Nr.:	Information	VPE
Extension, galvanised	TS150	0315309	with end storage and cover, 1.05 m long	1 pc.
Extension, galvanised	TS150	0315308	with end storage and cover, 2.05 m long	1 pc.

Equipment

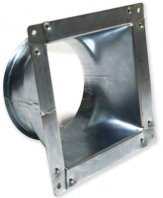


Inlet Ø 150 mm

TS150
Art.-Nr.: 1015002
 Flange Ø 150 mm with flared edge

VPE

1 pc.



Transition, galvanised

TS150
Art.-Nr.: 615240
 straight, square to Ø 150 mm, t = 1.5 mm, for connection to the auger outlet

VPE

1 pc.



Outlet, galvanised

TS150
Art.-Nr.: 0315031
 Dimensions: 150 x 150 mm, without slide valve

VPE

1 pc.



Outlet, galvanised

TS150
Art.-Nr.: 0315032
 Dimensions: 150 x 150 mm, with hand slide valve

VPE

1 pc.



Intermediate outlet, pneumatically operated

TS150
Art.-Nr.: 0315038
 Pneumatically operated gate valve by means of cylinder, solenoid valve, solenoid 24V and position indicator, intermediate outlet, square, transition, angular, outlet square on Ø 150 mm

VPE

1 pc.

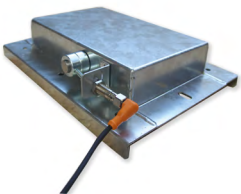
Intermediate outlet, motor operated

TS150
Art.-Nr.: 0315036

Gate valve with gear motor 0.18 kW and position indicator, intermediate outlet, angular, transition square, outlet square to \varnothing 150 mm, rain cover for motor

VPE

 1 pc.

Overflow protection, cpl.

TS150
Art.-Nr.: 0315001
 with IFM switch 503

VPE

 1 pc.

Mounting bracket

TS150
Art.-Nr.: 0315550

t = 4 mm, for attaching supports to the auger trough

VPE

 1 pc.

28 Motors & Gear Boxes

Witte Quality Motors



Three-phase asynchronous electric motors

- Motors up to 55 kW (higher outputs and special designs available on request) IP55, insulation class F, S1 - 100% ED, from size 90 with PTC thermistor (exceptions possible), design B3/B5/B14/B35/B34
- Size 56 to 132 with aluminium housing (up to size 225 possible on request) and screwed feet
- Size 160 to 450 with cast iron housing (size 132 available on request) with terminal box position on top
- Voltage 230/400V-50Hz, 460V-60Hz up to 3 kW output
- Voltage 400/690V-50Hz, 460V-60Hz from 4 kW output
- All motors CE marked and according to IEC60034-1. Standard motors also available in IE4. All three-phase motors suitable for operation on frequency inverter, optionally equipped with forced cooling fan.

Name	Leistung	Informationen
Multinorm motors with CE + UL/CSA + UKCA marking	0.12 to 55 kW	2-pole to 8-pole motors, up to size 180 with aluminium housing and cast iron flange
2-pole motors with 3000 rpm	0.12 to 55 kW	IP55, insulation class F, S1 - 100 %ED, from size 90 with PTC thermistor (exceptions possible), type B3/B5/B14/B35/B34
4-pole motors with 1500 rpm	0.12 to 55 kW	IP55, insulation class F, S1 - 100 %ED, from size 90 with PTC thermistor (exceptions possible), type B3/B5/B14/B35/B34
6-pole motors with 1000 rpm	0.12 to 55 kW	IP55, insulation class F, S1 - 100 %ED, from size 90 with PTC thermistor (exceptions possible), type B3/B5/B14/B35/B34
8-pole motors with 750 rpm	0.25 to 3.0 kW	IP55, insulation class F, S1 - 100 %ED, from size 100 with PTC thermistor (exceptions possible), type B3/B5/B14/B35/B34
Motors with brake	0.25 to 7.5 kW	IP55, insulation class F, S3 - 60 %ED, type B3/B5/B14/B35/B34
Size 160 to 225 motors with changeable terminal box position	7.5 to 45 kW	Aluminium housing with cast iron flange, IP55, insulation class F, S1 - 100 % ED, with PTC thermistor, type B3/B5/B14/B35/B34
Single-phase motors	0.25 to 3.0 kW	IP55, insulation class F, S1 - 100 %ED, with PTC thermistor, type B3/B5/B14/B35/B34, starting and operating capacitor, electronic switching relay
Progressive motors with increased output	0.55 to 15 kW	IP55, insulation class F, type B3/B5/B14/B35/B34

Other variants and special designs available on request.

Witte Quality Gear Boxes

Gear motors and gears for the attachment of IEC flange motors (B5 or B14)



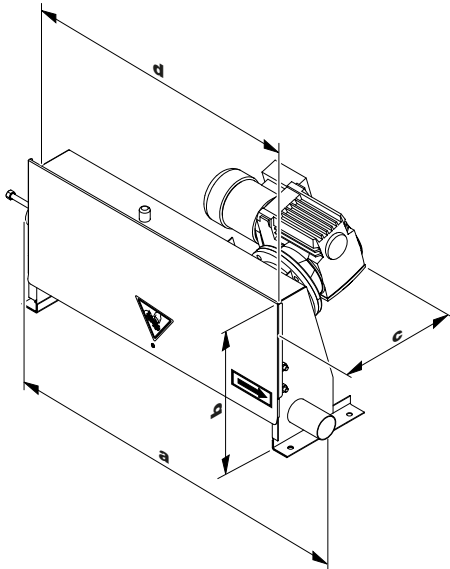
- Auger gears with aluminium housing and synthetic oil, others with grey cast iron housing and mineral oil
- Solid and durable construction, on request with reinforced bearings, torque support, backstop etc.
- Various special versions available, also ATEX variants available

Name	Leistung	Informtionen
Auger gear / motors	0.12 to 7.5 kW	NMRV compatible, size 030 to 150, output flange, output shaft, hollow shaft cap possible
Spur gear / motors	0.12 to 160 kW	Size 002 to 976, flange or base mounting possible
Flat gear / motors	0.12 to 160 kW	Size 072 to 976, output flange, output shaft, hollow shaft with shrink disc, extruder possible
Bevel gear / motors	0.12 to 160 kW	Size 002 to 976, output flange, output shaft, hollow shaft with shrink disc, extruder possible

29 Product Dimensions

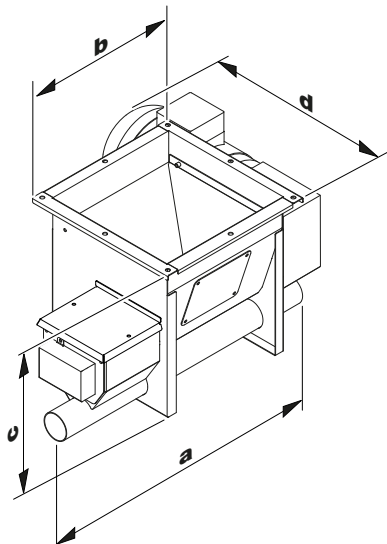
Product Dimensions

1



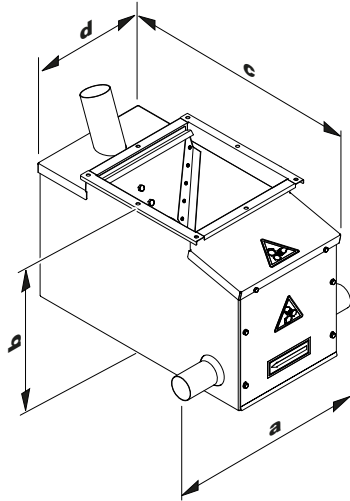
Name	a	b	c	d
Drive Plus Basic	1030mm	430mm	350mm	800mm
Drive Premium	1110mm	440mm	410mm	940mm
Drive Easy Power	1237mm	656mm	450mm	1040mm

2



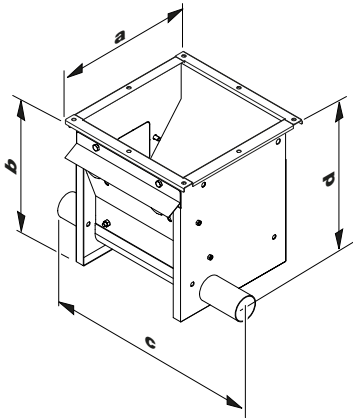
Name	a	b	c	d
Longitudinal auger infeed	630mm	361mm	375mm	400mm

3



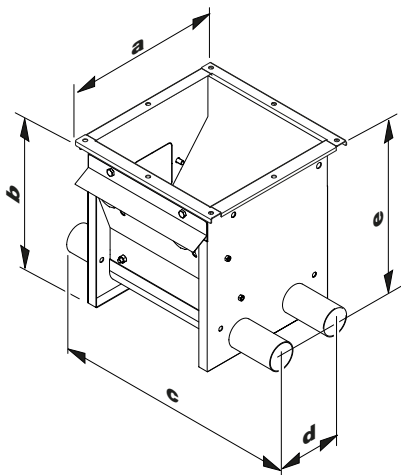
Name	a	b	c	d
Infeed chain driven. auger	507mm	400mm	640mm	361mm

4



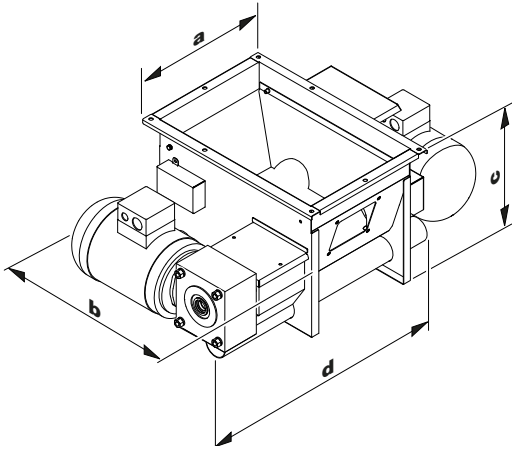
Name	a	b	c	d
Infeed, single-circuit	361mm	375mm	518mm	310mm

5



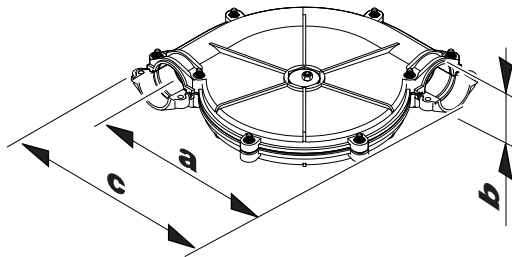
Name	a	b	c	d	e
Infeed, double-circuit	361mm	375mm	518mm	150mm	361mm

6



Name	a	b	c	d	e
Longitudinal auger infeed, double-circuit	361mm	375mm	355mm	750mm	152mm

7



Name	a	b	c
Corner-piece ribbed Ø 45 mm	324mm	68mm	368mm
Corner-piece ribbed Ø 50 mm	324mm	68mm	368mm
Corner-piecs ribbed Ø 60 mm	324mm	68mm	368mm
Corner-piece Pigobello Ø 60 mm	335mm	68mm	375mm
Corner-piece V2A Ø 60 mm	340mm	65mm	405mm
Corner-piece V2A Ø 80 mm	370mm	83mm	450mm

30 Terms & Conditions

Information on orders, order confirmations, delivery time, small quantity surcharges, and returns

Orders

To avoid misunderstandings, please always use our article numbers and descriptions. Let us know your desired shipping date and shipping method so that we can process your orders quickly and accurately.

Order Confirmations

As a rule, you will receive the order confirmation within 2 business days after we receive your order. If you notice any errors or have changes after reviewing your confirmation, please inform us immediately, but no later than 48 hours after receiving our confirmation. If you wish to make changes at a later time, we may have to charge you for any costs incurred (if the change is still possible).

Delivery Time

Most of the items in this product list are stock items and are usually ready for shipment within 2 business days. However, the intermediate sale of the goods is reserved.

Delivery & Small Quantity Surcharge

We deliver exclusively from the Lastrup warehouse, but we are happy to handle the shipment of the goods on your behalf. The purchaser must inspect the goods immediately upon receipt. Visible defects or incorrect deliveries must be reported to us in writing within one week of receipt of the goods.

Flat Rate for Standard Packages
up to 31.5 kg = €17.50.

Small Quantity Surcharge
for orders with a value of less than €100.00 = €7.50.

Returns

You may return unused goods only after prior arrangement with us, provided they are not special orders or custom-made items. For returns, we charge a 10% restocking fee. For goods that are in perfect condition, we reserve the right to pass on any costs incurred for cleaning, repairs, and restocking to you.

General Terms and Conditions of Sale and Delivery

I. General Provisions

1. These General Terms and Conditions of Sale and Delivery (hereinafter referred to as "GTC") apply in their current version to all business relations, offers, and declarations of acceptance, as well as all deliveries and other services provided by us (including cost estimates, ancillary services, consultations, and information), and to all contracts we conclude on the seller, supplier, or contractor side with the buyer or client (hereinafter referred to as the "Customer").

2. The GTC apply exclusively. Conflicting, deviating, or supplementary terms and conditions of the Customer will not be recognized unless we have explicitly agreed to their application in writing in individual cases. The GTC apply only if the Customer is an entrepreneur (§14 of the German Civil Code, BGB), a legal entity under public law, or a special fund under public law.

3. The GTC also apply if we acknowledge a Customer's order and/or execute an order unconditionally while being aware of terms and conditions that conflict with or deviate from our GTC.

4. The GTC shall also apply to all future transactions with the Customer in the context of ongoing business relationships, even if they are not expressly agreed upon again.

5. Individual agreements (including collateral agreements, supplements, and amendments) with the Customer and differing details in offers/acceptance declarations take precedence over the GTC. The content of such agreements is governed by a written contract or written confirmation.

6. Legally significant declarations and notifications that the Customer must make to us after the conclusion of the contract (e.g., setting deadlines, notifications of defects, declarations of withdrawal or reduction) must be made in writing to be effective.

7. References to the applicability of statutory provisions are for clarification purposes only. Even without such clarification, statutory provisions apply unless they are directly amended or explicitly excluded by these GTC.

8. We retain ownership and intellectual property rights to illustrations, drawings, sketches, planning documents, calculations, offers, other documents, and samples. These must be returned to us immediately upon request and may not be passed on to third parties without our consent.

9. Samples must be returned within one month unless otherwise agreed, or purchased. Custom-made samples must always be purchased and are excluded from exchange. Custom-made products are items not produced in series or listed in price lists.

Special colorings based on submitted color samples are also considered custom-made, unless otherwise agreed in writing. The Customer assumes liability for ensuring that third-party rights are not infringed by the use of submitted drawings, samples, or similar aids.

II. Order and Acceptance

1. Offers and declarations of acceptance / confirmation of orders, amendments and other ancillary agreements and arrangements made before or at the time of conclusion of the contract must be in writing (letter, fax, signed document transmitted by e-mail) to be legally effective.

2. Offers made by us, in particular with regard to price, quantities and delivery period, are non-binding and are to be understood only as an invitation to the buyer to submit a contract application (hereinafter referred to as „Order“) on their part, unless the offer made by us in an individual case indicates otherwise. The buyer is bound to their order for a fortnight. A valid contract shall only be concluded upon written confirmation of the order by us, at the latest however - in this respect deviating from Clause 1 - upon acceptance of the delivery by the buyer.

3. Only the order confirmation or, in the case of immediate execution of the order, the goods actually delivered together with the delivery note shall be decisive for the scope and object of the performance. If an order confirmation transmitted by us contains recognisable changes to the order of the buyer, the buyer's consent shall be deemed to have been given if, in the case of an order confirmation transmitted by us, the buyer does not object to this order confirmation in writing within ten working days. In any case, however, the consent shall be deemed to have been given at the latest when the buyer accepts the performance without objecting in writing within the scope of the inspection and complaint obligations pursuant to Section VI.

4. Details of our goods (technical data, dimensions, etc.) are only approximate and approximate; they do not constitute a guaranteed quality unless the guarantee is given expressly and in writing.

III. Prices and Payment Terms

1. Unless otherwise agreed in writing, the prices quoted by us are free ex works or ex delivery warehouse Lastrup. The statutory value added tax is not included in our prices; it will be shown separately in the invoice. Prices are in euros.

2. If delivery is made later than 4 months after conclusion of the contract, we shall be entitled to increase the agreed price if, between conclusion of the contract and delivery, the applicable prices of our suppliers or any other costs (including public charges) on our goods increase; otherwise, the price stated in the order confirmation shall apply. We shall also be entitled to increase prices for persons within the meaning of Section 310 para. 1 sentence 1 of the German civil code [BGB] if delivery is made within four months of conclusion of the contract and the costs of our goods increase between conclusion of the contract and delivery. The price increase shall become effective as soon as we have notified the buyer thereof in writing. Price changes are in particular changes in procurement costs due to fluctuations in raw material prices, utilisation of manufacturing capacities, exchange rates, transport costs, collective wage agreements, customs duties or comparable cost-driving factors that occur outside our sphere of influence. We shall provide evidence of the increase factors at the request of the buyer.

3. Unless otherwise agreed, the agreed purchase price shall be due and payable within fourteen calendar days from the date of invoice. The deduction of a discount requires an express written agreement. We shall not grant a cash discount if the buyer is in arrears with the payment of earlier deliveries.

4. Payment shall only be deemed to have been made when we can dispose of the invoice amount in full. We are not obliged to accept cheques. They are only accepted on account of performance, not in lieu of performance.

5. In the event of default in payment, we shall be entitled to demand interest in the amount of 9 percentage points above the respective base interest rate as well as the statutory flat-rate default fee in the amount of EUR 40.00. We reserve the right to assert that higher damage was caused by default.

6. The buyer agrees that invoices may be sent to him electronically (§ 14 para. 1 pg. 7, 8 of the German VAT act). Invoice complaints must be submitted by the buyer in writing without delay, i.e. without culpable hesitation.

7. Upon expiry of the payment period specified in clause 3, the buyer shall be in default without the need for a reminder. Interest is to be paid on the purchase price at the respective applicable statutory interest rate for arrears during the period of the arrears. We reserve the right to claim for further damages due to arrears. With respect to merchants, our claim to the commercial due date interest (§ 353 HGB) remains unaffected.

8. The buyer may only offset counterclaims which are recognised by us, undisputed, legally established or ready for decision. The buyer is only entitled to exercise a right of retention if the counterclaim is based on the same contractual relationship and is recognised by us, undisputed, legally established or ready for a decision.

9. If the buyer is in arrears with a due payment in whole or in part, we shall be entitled to withdraw from the contract after the unsuccessful expiry of a reasonable period

of grace set for them. Our right to withdraw from the contract shall also apply if circumstances become known which are likely to reduce the creditworthiness of the buyer. If we withdraw from the contract, we shall be entitled to have the goods delivered by us marked, stored separately and collected at the buyer's expense. The buyer hereby declares their consent that the persons commissioned by us to collect the goods may enter and drive onto the premises where the goods are located for this purpose.

10. If it becomes apparent after the conclusion of the contract that our claim to the purchase price is jeopardised by the buyer's inability to pay (e.g. by an application for the opening of insolvency proceedings), we shall be entitled in accordance with the statutory provisions to refuse performance and – if necessary after setting a deadline – to withdraw from the contract (§ 321 BGB), or alternatively to renegotiate the commercial terms (e.g. cash in advance). With contracts concerning the production of custom-made goods (individual productions) we can declare the cancellation immediately; the statutory regulations concerning the dispensability of setting a deadline remain unaffected.

IV. Delivery period, delivery date and delay in delivery

1. Unless otherwise stated or agreed by us, delivery dates and delivery periods are non-binding. Any delivery period shall not commence until all documents, approvals, releases or other acts of cooperation to be procured by the buyer have been provided or an agreed down payment has been made. Even after the commencement of a delivery period, we shall not be obliged to deliver if the buyer fails to fulfil due obligations on their part in a timely and proper manner, in particular if they are in default with a payment. We reserve the defence of non-performance of the contract.

2. In the event of impediments to delivery as a result of force majeure or other unforeseeable events affecting us or our suppliers or vicarious agents, which temporarily prevent us from delivering the goods on the agreed delivery date or within the agreed delivery period through no fault of our own or attributable to us, the delivery dates and delivery periods shall be extended by the period of the disruption to performance caused by these circumstances plus a reasonable restart period. If, as a result of these circumstances, delivery becomes wholly or partially impossible or unreasonable, we shall be released from our obligation to deliver and shall be entitled to withdraw from the contract. If such a disruption leads to a delay in performance of more than 8 weeks, both contracting parties shall be entitled to rescind the contract, but the buyer shall only be entitled to rescind the contract after setting a reasonable deadline for delivery. The statutory rights of withdrawal of the contracting parties shall remain unaffected. If we withdraw from the contract, we shall immediately reimburse the buyer for all payments already made. If delivery difficulties occur for the aforementioned reasons only with regard to a part of the goods, this provision shall apply accordingly. In the event of delivery difficulties, we shall be entitled to reduce the quantities sold in proportion to our own supply.

3. Such events include, in particular, disruptions caused by war, sabotage, fire, explosion, water or natural disasters/ extreme natural events such as severe weather, lawful industrial disputes and strikes, pandemics, epidemics and plagues, official orders, interruption or suspension of the energy supply, failures or restrictions of electronic data exchange caused by third parties and cyber attacks on the IT systems of ourselves or a supplier / vicarious agent by third parties.

4. We are obliged to inform the buyer immediately of the non-availability of the service and to reimburse any consideration already paid by the buyer without delay. In this case, we are not at fault.

5. Clause 4 above shall also apply in the event of a continuous supply relationship, in which case we shall also be entitled to terminate the overall contract, even if only partial deliveries are affected, but we cannot reasonably be expected to adhere to the overall contract due to force majeure.

6. In the event of non-delivery or late delivery by suppliers, this also includes the delivery of raw materials and energy such as gas, we shall not be in default vis-à-vis the buyer unless we are responsible for the non-delivery or late delivery. If it is certain that we are not supplied with the ordered goods, raw materials or the ordered energy quantities despite the conclusion of a congruent hedging transaction for reasons for which we are not responsible, we shall also be entitled to withdraw from the contract.

7. In the event of a delay in delivery, we shall be liable for claims for damages in accordance with the provision in Section VII. However, in the event of minor negligence, the damage caused by delay to be compensated by us shall be limited to 0.5% of the value of the (partial) delivery not made on time for each completed week, but not more than 5% of the value of the delayed (partial) delivery. We reserve the right to prove that the buyer has not suffered any damage or that the damage is significantly less than the aforementioned lump sum.

8. The scope of delivery is determined by our written order confirmation.

9. We reserve the right to make changes to the design, dimensions, weight, material or shape which are due to improvements in technology or to requirements of the legislator during the delivery period, provided that the delivery item is not significantly changed and the changes are reasonable for the buyer.

10. If a brand designation is specified in our written order confirmation with regard to the delivery item, we reserve the right to deliver an equivalent delivery item with a different designation.

V. Default of acceptance, transfer of risk, liquidated damages

1. If the buyer is in default of acceptance or culpably violates other duties to co-operate, we are entitled, without prejudice to its other rights, to deposit the goods appropriately

or have them stored at the risk and expense of the buyer. For this purpose, we may in particular also make use of a forwarding agent or a warehouse keeper. If we store the goods ourselves, we shall be entitled to a storage fee of 0.25% of the net purchase price of the goods to be stored per completed week. The assertion and proof of higher or lower storage costs is expressly reserved. Further claims remain unaffected. The risk of accidental loss or deterioration of the goods shall pass to the buyer at the time the buyer is in default of acceptance.

2. If the buyer refuses to accept the goods in accordance with the contract or if a reasonable deadline set for them has expired, we are entitled to withdraw from the contract and/or to claim damages instead of performance. In this case, we are entitled to demand a lump sum of 20% of the agreed net purchase price from the buyer as compensation for damages. The buyer is at liberty to prove that in this case we have not incurred any damage or that the damage is lower than the lump sum. Further rights, in particular the proof of higher damage, remain unaffected.

3. If the buyer withdraws from a placed order without justification, we may claim 15% of the sales price for the costs incurred in processing the order and for loss of profit, without prejudice to the possibility of claiming higher actual damages. The buyer reserves the right to prove a lower damage.

4. Dispatch costs ex works or delivery warehouse are not included in the price. The route and method of dispatch shall be determined by us at our discretion, unless express written dispatch instructions have been issued by the buyer. HGV access and unloading must be guaranteed. We shall only be obliged to take out transport insurance if expressly instructed to do so in writing by the customer; the costs of this insurance shall be borne by the buyer.

5. The goods shall be shipped to the best of our knowledge to the exclusion of any liability on our part. In particular, we are not responsible for changes and deterioration of the goods during transport or due to improper storage. Any transport damage must be reported to us by the buyer in writing without delay, at the latest, however, within one week after the date of dispatch. To substantiate this, a written confirmation from the carrier regarding the transport damage that has occurred must be enclosed with the notification.

6. The risk shall pass to the buyer as soon as the goods have left our works or the distribution warehouse, even if we assume further services such as carriage-paid shipment, delivery or similar. If we have notified the buyer that the goods are ready for dispatch or collection, the risk shall pass to the buyer if they do not call off or collect the goods and we have unsuccessfully set them a reasonable deadline for doing so.

VI. Warranty

1. The buyer's claims for defects shall be subject to the condition that it has complied with its statutory obligations to inspect the goods and give notice of defects in accordance with Sections 377, 381 of the German commercial

code [HGB] upon delivery. In particular, the buyer shall inspect the goods for obvious defects (including wrong and short deliveries) and transport damage immediately after delivery. If a defect becomes apparent in the course of the inspection or if a defect which could not be detected in the course of the inspection at the time of delivery becomes apparent at a later date, we must be informed of this in writing without delay. Notification shall be deemed to have been made without delay if it is made within seven days of delivery and, in the case of defects which are not recognisable, within the same period of time from discovery or from the time at which the defect would have been discovered in the course of a reasonable inspection. If the buyer fails to duly inspect the goods and/or give notice of defects in accordance with the above provisions, the goods shall be deemed to have been approved in the state in which they were delivered within the meaning of § 377 of the German commercial code [HGB]. Goods which are the subject of a complaint must be stored properly by the buyer at their own expense. The timeliness of the notification depends on its receipt by us.

2. If the buyer reports a defect in accordance with Clause 1 in due time, we shall be entitled, at our own discretion, to effect subsequent performance either by remedying the defect (subsequent improvement) or by delivering another item free of defects (subsequent delivery). If we decide to remedy the defect (rectification), we shall bear all necessary expenses, unless these are increased by the fact that the goods have been taken to a place other than the place of destination after delivery. However, if a request by the buyer to remedy a defect turns out to be unjustified, we may demand reimbursement of the costs incurred from the buyer.

3. Warranty rights not only arise solely in the case of insubstantial deviation from the agreed quality or in the case of merely insubstantial detracting from usability. Colour deviations or differences in the colour of the goods due to manufacturing do not constitute a defect and do not entitle the buyer to withdraw from the contract.

4. Insofar as we have claims against our suppliers, our liability shall be effected by assignment of these claims to the ordering party, who hereby accepts this assignment for this case. A claim by the buyer for reimbursement of costs incurred in the course of asserting claims against a supplier is excluded in any case if any measures incurring costs, in particular the initiation of legal proceedings, are not agreed with us in advance. If a claim against the supplier cannot be considered or if the supplier refuses to be liable to the buyer, our liability shall be limited to supplementary performance. The buyer must return the defective goods or the replaced part to us. If this does not happen within 2 weeks after our replacement delivery, the costs of the supplementary performance can be charged to the buyer by us.

5. We shall not reimburse any further costs incurred by the buyer for the use of loan equipment etc. during the period of subsequent performance. If the supplementary performance has failed or if we are not in a position to do so, the buyer shall be entitled to withdraw from the contract or to reduce the purchase price.

6. The buyer may only assert claims against us due to the infringement of industrial property rights or copyrights of third parties if they immediately inform us in writing of the claims asserted by the third party, do not acknowledge an infringement and all defensive measures and settlement negotiations remain reserved for us. Claims of the buyer are also excluded insofar as the infringement of industrial property rights or copyrights of third parties is caused by special specifications of the buyer, by an application not foreseeable by us or by the fact that the delivery is modified by the buyer or used together with products not supplied by us.

7. With the exception of claims for damages due to defects, claims for defects shall become time-barred one year after delivery of the goods or acceptance.

8. The buyer shall only be entitled to claims for damages due to defects insofar as our liability is not excluded or limited in accordance with Section VII of the GTCS. Further claims or claims other than those regulated here (Section VI) due to a defect are excluded.

9. The provisions of this Clause VI shall not affect claims based on defects which we have fraudulently concealed or which are covered by a guarantee of quality.

VII. Liability

1. We shall be liable without limitation in the event of intent and gross negligence. In the event of a slightly negligent breach of a primary obligation or a secondary obligation, the breach of which jeopardises the achievement of the purpose of the contract or the fulfilment of which makes the proper execution of the contract possible in the first place and on the observance of which the buyer was entitled to rely, our liability shall be limited to damage foreseeable at the time of conclusion of the contract and typical for the contract.

2. In any case, in the event of a slightly negligent breach of a primary performance obligation or a material secondary obligation, our liability shall be limited to twice the order value.

3. We shall not be liable in the event of a slightly negligent breach of ancillary contractual obligations which are not material ancillary obligations.

4. The above exclusions and limitations of liability shall not apply in the event of fraudulent concealment of defects or in the event of the assumption of a quality guarantee, for liability for claims of the buyer based on the product liability act as well as for bodily injury and damage to health or loss of life of the buyer. This does not imply a change in the burden of proof to the detriment of the buyer.

5. Insofar as our liability is excluded or limited, this shall also apply to the personal liability of our legal representatives, employees, staff and vicarious agents.

6. With the exception of claims arising from tort, claims for damages by the buyer for which our liability is limited under this Clause VII shall become statute-barred after one

year calculated from the statutory commencement of the limitation period.

7. However, if a request by the buyer to remedy a defect turns out to be unjustified, we may demand reimbursement of the costs incurred from the buyer. Due to a breach of duty which does not consist of a defect, the buyer may only withdraw from or terminate the contract if we are responsible for the breach of duty. A free right of termination on the part of the buyer (in particular pursuant to §§ 650, 648 BGB) is excluded. Moreover, the statutory pre-requisites and legal consequences shall apply.

8. Notwithstanding § 438 I No. 3 BGB, the general limitation period for claims arising from material defects and defects of title is one year from delivery. If, however, the goods are a building or an object that has been used for a building in accordance with its customary use and has caused its defectiveness (building material), the limitation period shall be five years from delivery in accordance with the statutory provision (§ 438 I no. 2 BGB). Also unaffected are special statutory provisions for claims in rem for surrender by third parties (§ 438 I no. 1 BGB), in the event of fraudulent intent on the part of the seller (§ 438 III BGB) and for claims in supplier recourse (§§ 478 ff., 445 ff. BGB).

9. The above limitation periods for claims under the purchase contract shall also apply to other contractual and non-contractual claims for damages of the buyer based on a defect in the goods, unless the application of the regular statutory limitation period (§§ 195, 199 BGB) would lead to a shorter limitation period in the individual case. The limitation periods of the Product Liability Act shall remain unaffected in any case. Otherwise, the statutory limitation periods shall apply exclusively to the buyer's claims for damages.

VIII. Retention of title

1. The delivered goods shall remain our property (hereinafter referred to as „goods subject to retention of title“) until all current and future claims against the buyer arising from the delivery contract and other claims which we subsequently acquire against the buyer in direct connection with the delivered goods – irrespective of the legal grounds – have been settled. Furthermore, the goods subject to retention of title shall remain our property as goods subject to retention of title until fulfilment of all other claims which we acquire against the buyer now or in the future – irrespective of the legal grounds (including all balance claims from current account). In the case of a running account, the goods subject to retention of title serve as security for our balance claims.

2. In the case of deliveries to countries in which the validity of the retention of title is linked to special prerequisites or formal requirements, the buyer shall immediately do everything at their own expense to provide us with corresponding security rights. The buyer shall cooperate in all measures (e.g. registration, publication, etc.) which are necessary and conducive to the effectiveness and enforceability of such security interests.

3. The buyer is entitled to process and resell the reserved goods in the ordinary course of business. The right to process and resell does not exist if the buyer is in default of payment or has not only temporarily suspended their payments. As long as we are the owner of the goods subject to retention of title, we are entitled to revoke the authorisation for processing and resale if there is an objectively justified reason. The buyer hereby assigns to us all claims to which they are entitled from the processing and resale of the reserved goods, including all ancillary rights. We hereby accept this assignment.

4. The buyer is entitled to collect the assigned claims until revocation. We may revoke the direct debit authorisation if there is an objectively justified reason. We are authorised to collect the assigned claims ourselves. As long as the buyer meets their payment obligations, is not in default of payment and, in particular, has not filed for insolvency proceedings or has not suspended payments, we undertake not to collect the assigned claims ourselves. If the buyer does not meet their payment obligations, we are therefore authorised to collect the claims ourselves, the buyer must hand over to us on request a list of all goods subject to retention of title, the assigned claims and the names and addresses of the debtors with the amount of the claims. Upon request, the buyer shall be obliged and we shall be entitled to notify the debtors of the assignment of the claim.

5. Any processing or transformation of the reserved goods in the ordinary course of business by the buyer shall be carried out on our behalf and in such a way that we shall be deemed to be the manufacturer within the meaning of § 950 of the German civil code [BGB] without any obligation on our part. Processed goods shall be deemed to be goods subject to retention of title in accordance with this clause. In the event of processing, combining or mixing of the goods subject to retention of title with other goods not owned by us, we shall be entitled to co-ownership of the new item in the ratio of the final invoice amount of the goods delivered subject to retention of title to the value of the other goods processed, combined or mixed at the time of processing, combining or mixing. If the buyer acquires sole ownership of the new item to this extent, it shall be deemed to be agreed that the buyer transfers to us pro rata co-ownership of the new item in the ratio of the value of the goods subject to retention of title to the value of the new item and shall keep this for us free of charge. In all other respects, the same shall apply to the new item created by processing, combining or mixing as to the goods subject to retention of title.

6. The buyer shall insure the reserved goods sufficiently against theft, burglary, water and fire damage and keep them under insurance cover. The buyer hereby assigns to us the claims to which they are entitled against their insurer in the event of a claim, insofar as they relate to our property or co-property. We hereby accept this assignment.

7. The buyer may neither pledge the reserved goods nor assign them as security. The buyer is obliged to inform us immediately of any seizure or other impairment by third parties and to provide us with all information and documents required to protect our rights. If the buyer fails to

meet a payment dead-line or breaches any other contractual agreements or if we become aware of circumstances which are likely to reduce the creditworthiness of the buyer, we shall be entitled to prohibit the resale of goods subject to retention of title, to demand their return or the granting of indirect possession to us at the buyer's expense or, if the goods have already been resold but not yet paid for in full or in part, to demand payment directly from the buyer's customer.

8. In the event of conduct in breach of contract on the part of the buyer, in particular in the event of default in payment, we shall be entitled to take back the delivered goods after setting a reasonable deadline. The requirement to set a time limit does not apply in case of imminent danger. Taking back the goods shall simultaneously constitute a withdrawal from the contract. After taking back the object of sale, we shall be entitled to realise it; the proceeds of the sale shall be set off against the buyer's liabilities - less reasonable sales costs.

9. At the request of the buyer, we are obliged to waive the reservation of title or to release the securities to which we are entitled to the extent that the realisable value from the total securities granted to us from reservation of title, assignment as security and advance assignment exceeds the total sum of the claims against the buyer to be secured by more than 10%. The collateral to be released shall be selected at our discretion.

IX. Data protection and confidentiality

With the establishment of a business relationship, we process and store personal data that are required for the implementation of the business relationship, in particular order processing and contract fulfilment, in accordance with the relevant data protection regulations. Prices and terms of payment agreed between the contracting parties may not be disclosed by the buyer to third parties without our prior and express written approval. For us as a trading company, supplier information constitutes business secrets which are generally not made available to the buyer. If, in individual cases, we have disclosed information to the buyer, the buyer must treat this information as strictly confidential, not pass it on to third parties and use it exclusively for the performance of the contract in the context of which the information was disclosed.

X. Place of jurisdiction, place of performance

1. The place of performance in relation to merchants, legal entities under public law or special funds under public law - also in bill of exchange and cheque proceedings - is Lastrup. The same shall apply if the buyer has no general place of jurisdiction in Germany. We are entitled to sue the buyer at any other legal place of jurisdiction. Statutory regulations on exclusive competences shall remain unaffected.

2. Unless otherwise stated in the order confirmation, the place of performance shall be our registered office. The buyer must send the money to our place of business at their own risk and expense.

3. The performance of the contract is subject to the proviso that there are no obstacles due to German, US or other mandatory applicable national, EU or international regulations of foreign trade law as well as no embargoes or other sanctions.

X. Final Provisions

1. Should individual provisions of these General Terms and Conditions of Delivery and Payment be or become void or ineffective in whole or in part, this shall not affect the validity of the remaining provisions. In such a case, the contracting parties shall be obliged to replace the void or invalid provision with a valid provision that comes as close as possible to the economic purpose of the invalid provision. The same shall apply in the event of a loophole within these General Terms and Conditions of Delivery and Payment.

2. The law of the Federal Republic of Germany shall apply to these business relations and all legal relations between us and the buyer to the exclusion of international uniform law, in particular the UN Convention on Contracts for the International Sale of Goods (CISG). The prerequisites and effects of the retention of title pursuant to Section VIII shall be governed by the law of the respective place where the item is located, insofar as the choice of law made in favour of German law is inadmissible or ineffective thereafter.

Let`s talk!

+49 4472 9404-0

Witte Lastrup GmbH

Schnelzer Str. 42
49688 Lastrup
T: +49 4472 9404-0
info@witte-lastrup.de

Loading and Pickup Times

Monday – Thursday:
07:00 – 15:30
Friday:
07:00 – 12:00

Office Hours

Monday – Thursday:
08:00 – 16:30
Friday:
08:00 – 13:30

witte® **Simply works.**